

EGC
2024

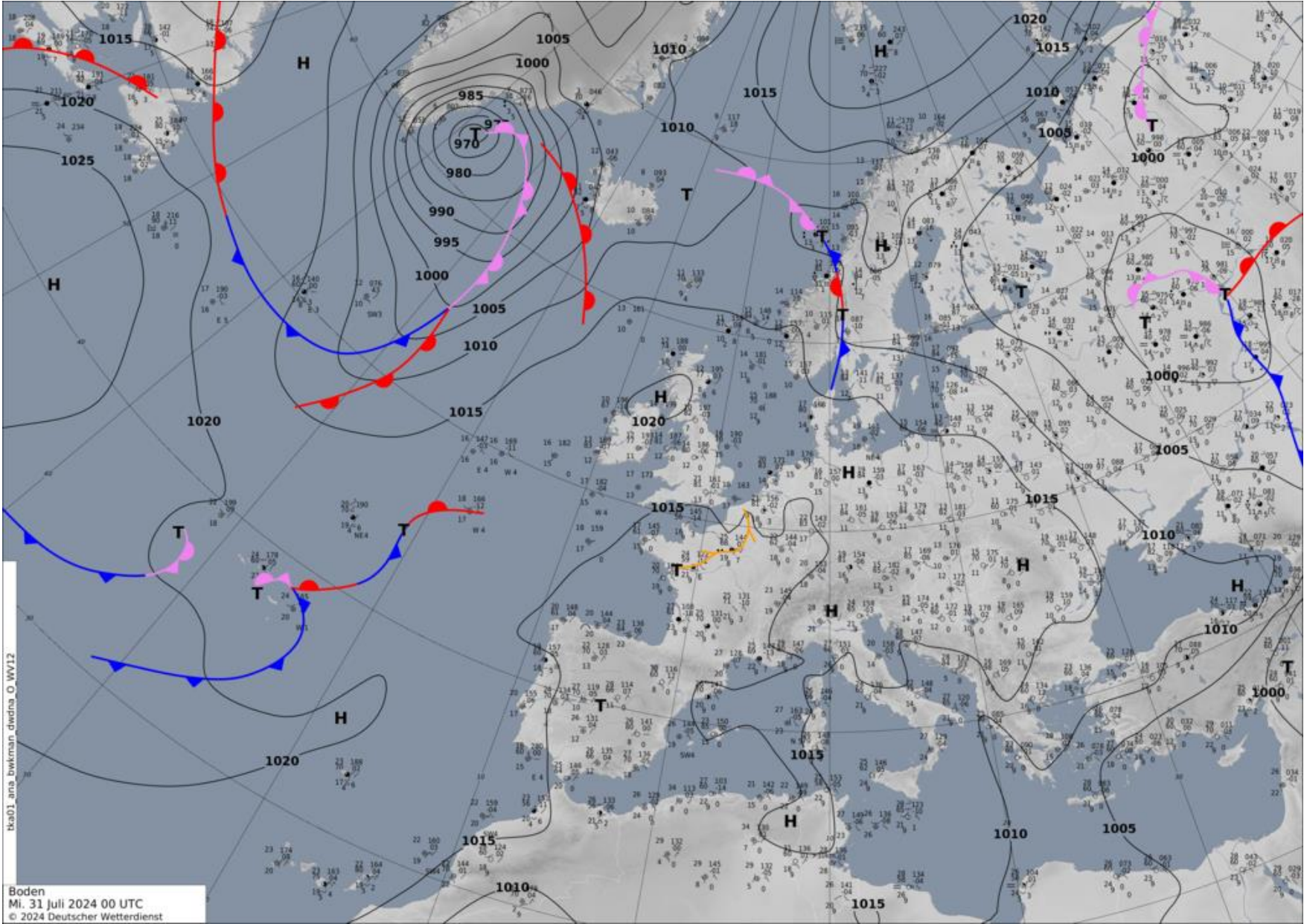


3 August - 17 August 2024 ,Tábor, Czech Republic

DAILY BRIEFING

OFFICIAL TRAINING DAY 1 – 31/07/2024

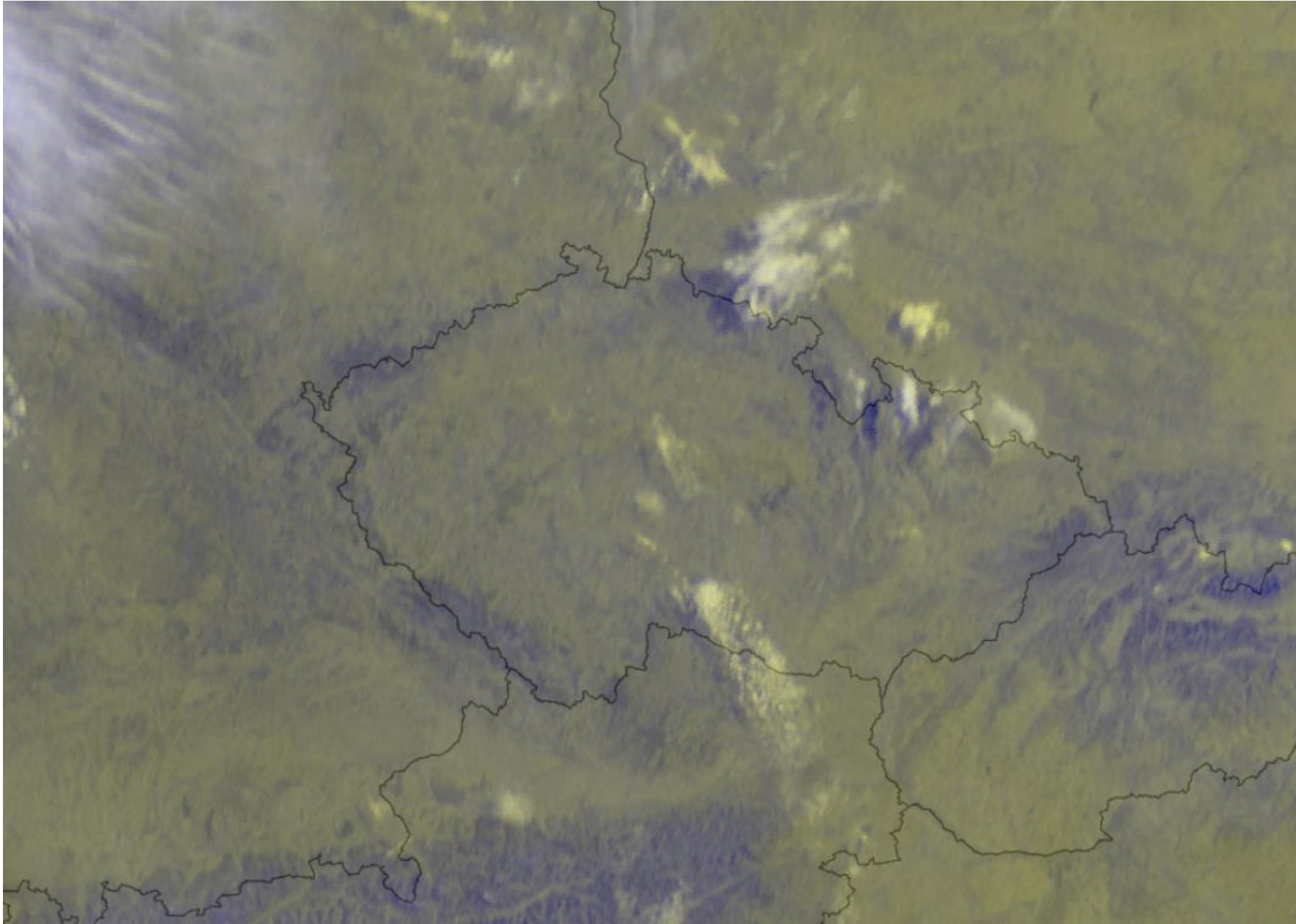
WEATHER



hkd01_ana_bwkman_diedna_O_WW12

WEATHER

EGC
2024



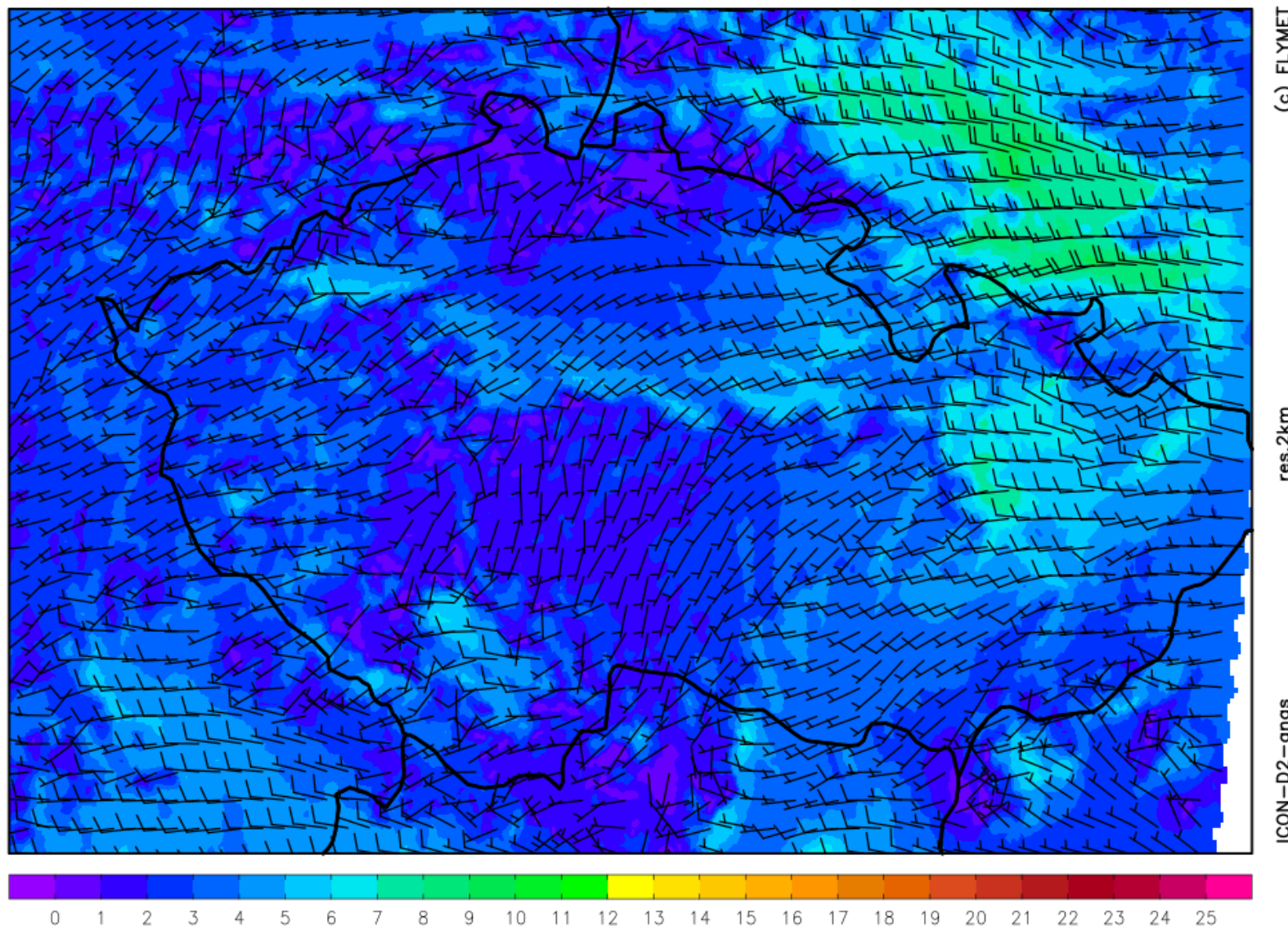
WEATHER

EGC
2024



vítr 1500 m [m/s]

středa 31.07. 2024 12:00 utc



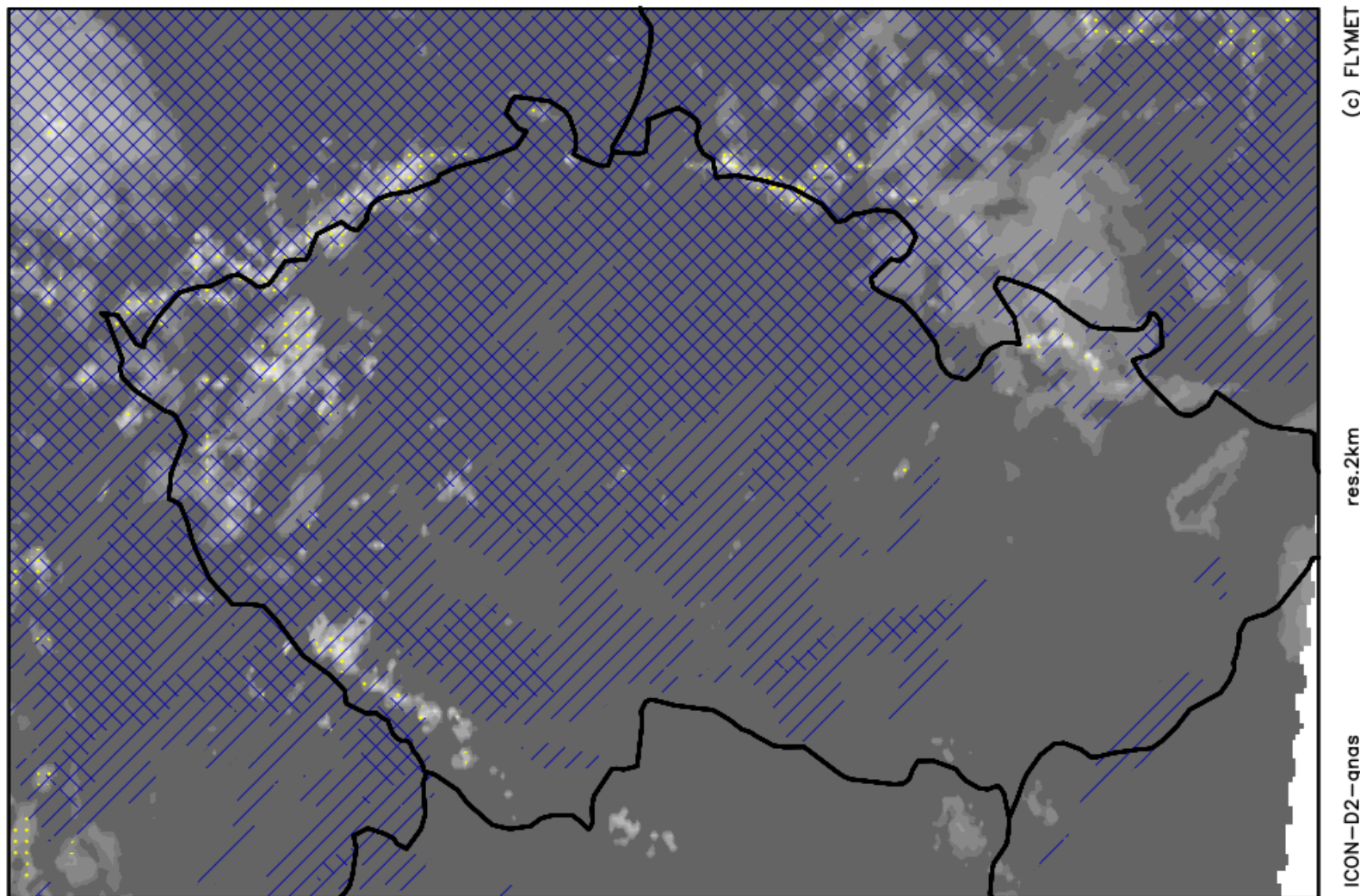
WEATHER

EGC
2024



oblačnost

středa 31.07. 2024 12:00 utc



skc

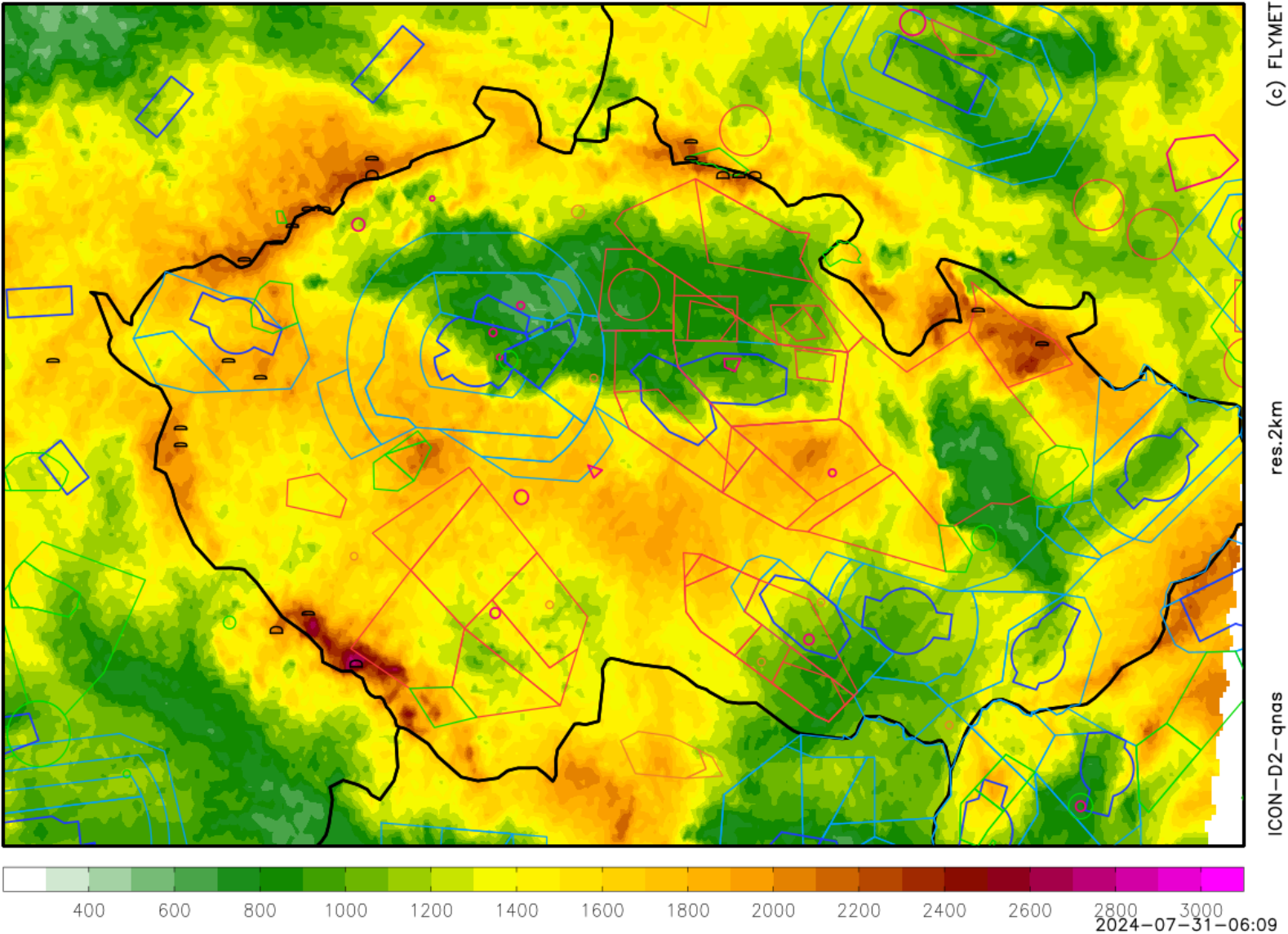
sct

ovc

WEATHER

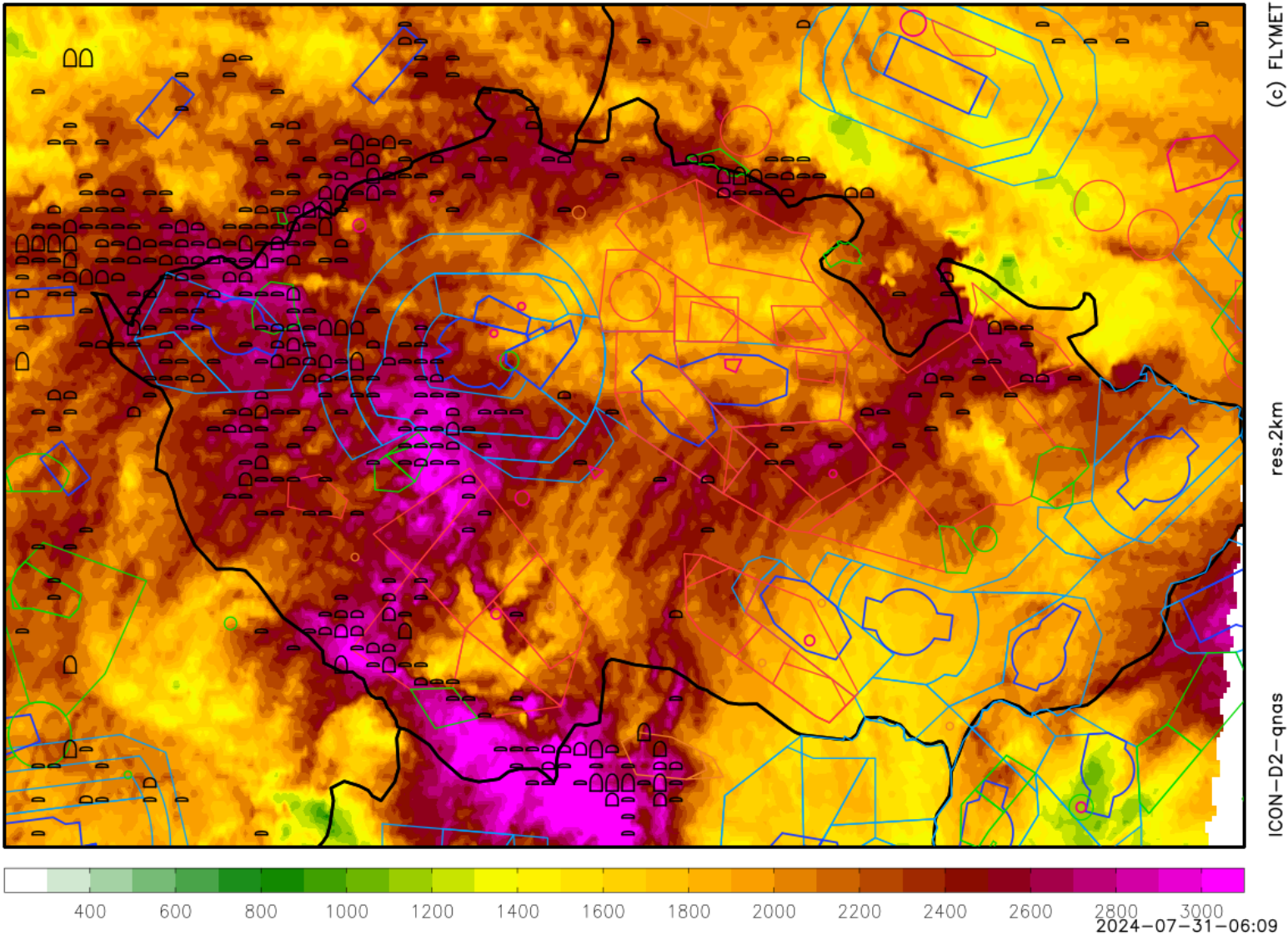
termika čistá + kumuly

středa 31.07.2024 10:00utc

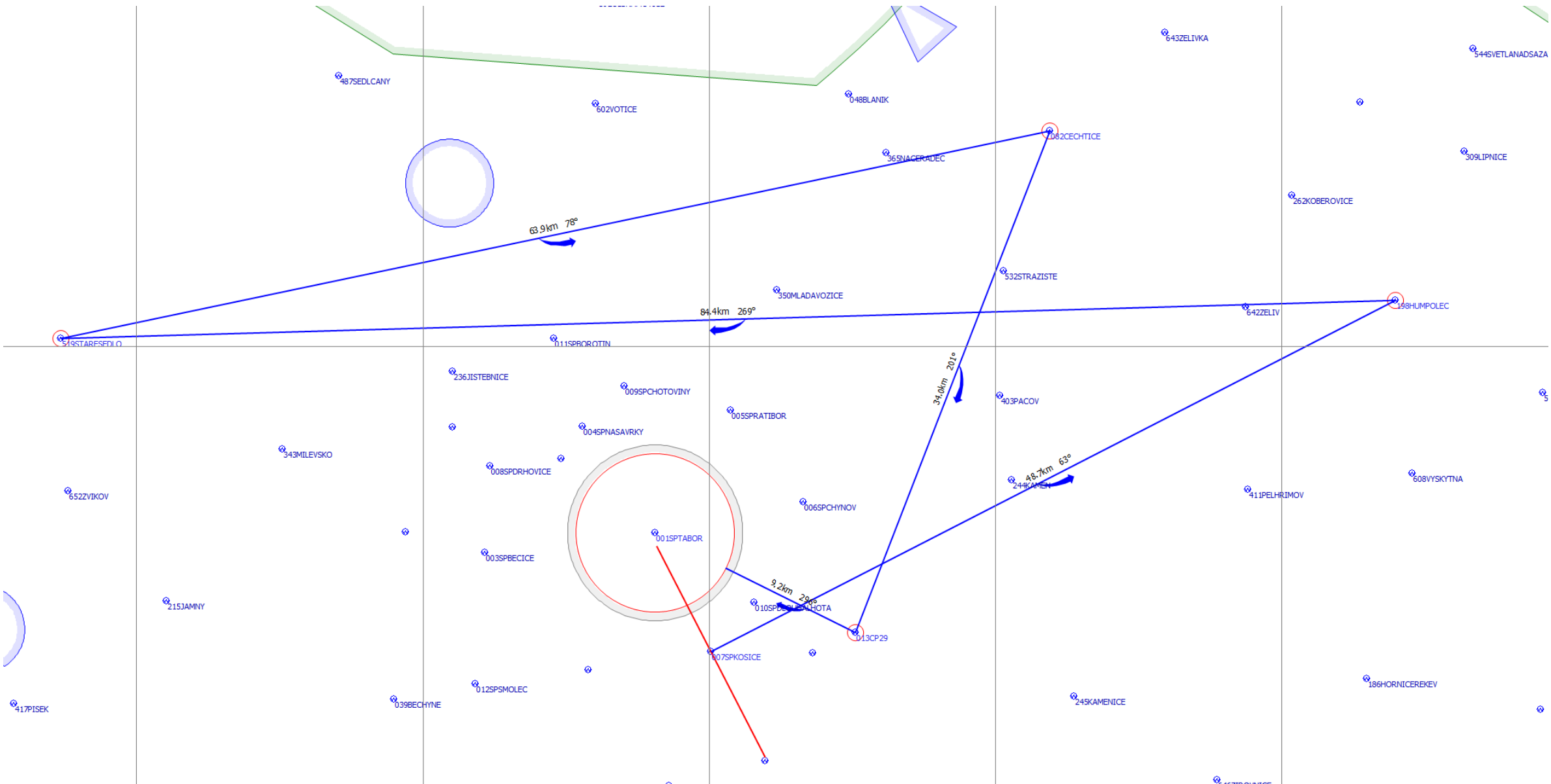


WEATHER

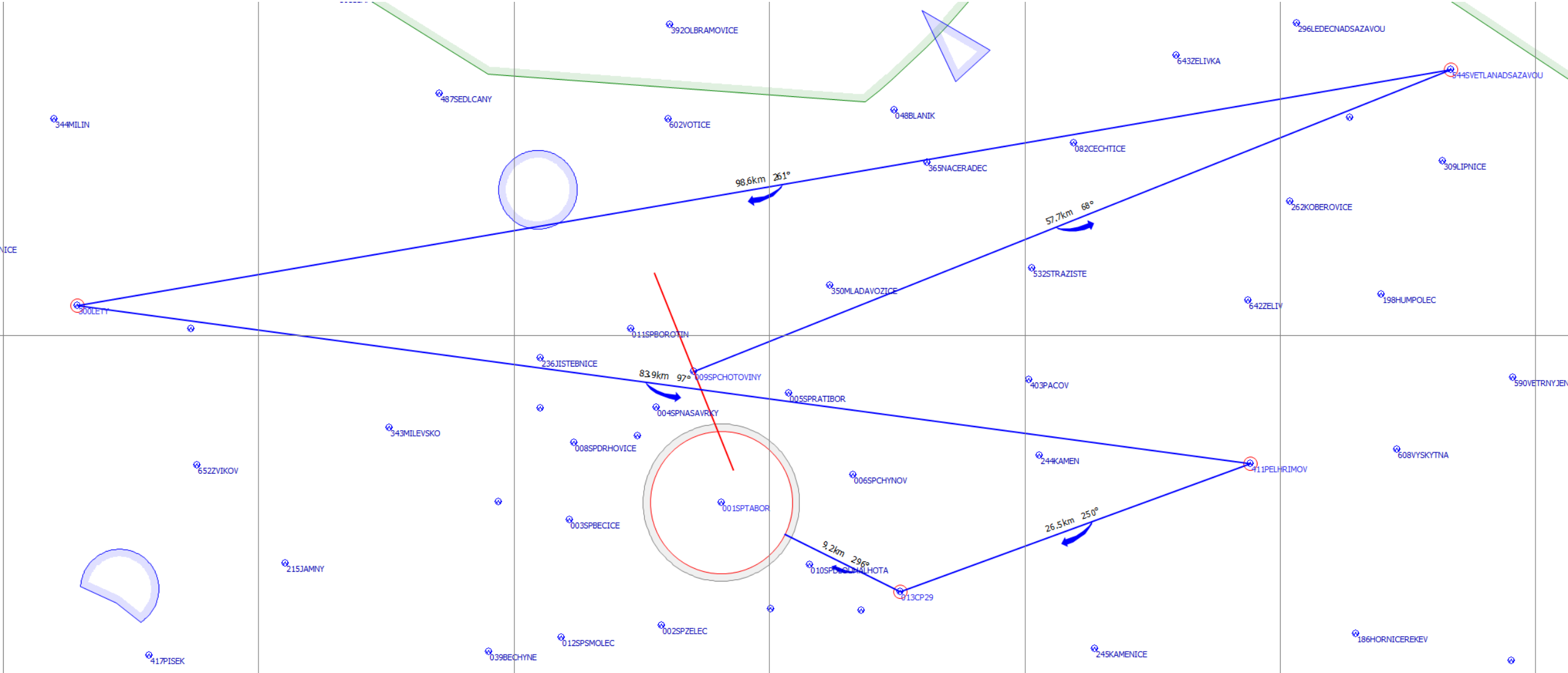
termika čistá + kumuly středa 31.07.2024 14:00utc



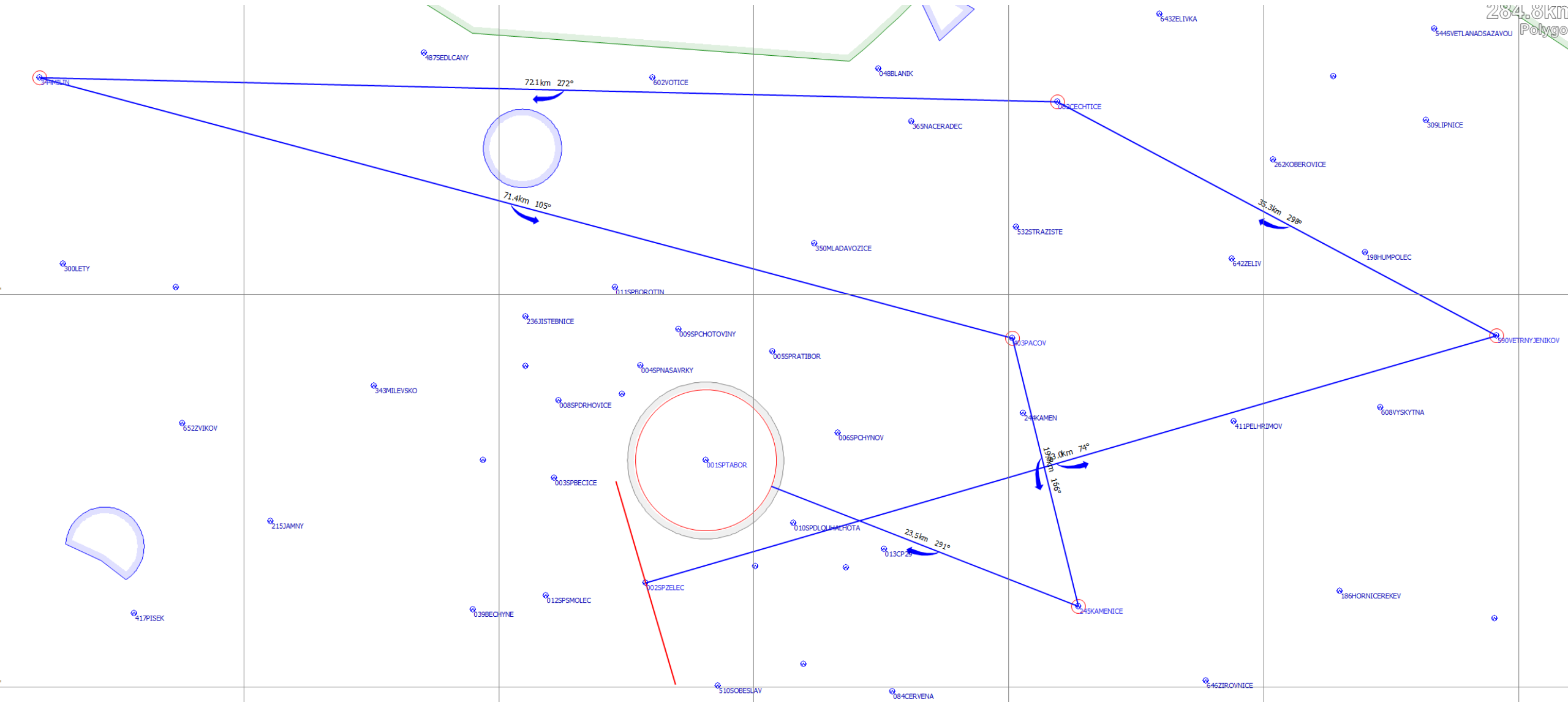
TASK FOR CLUB CLASS



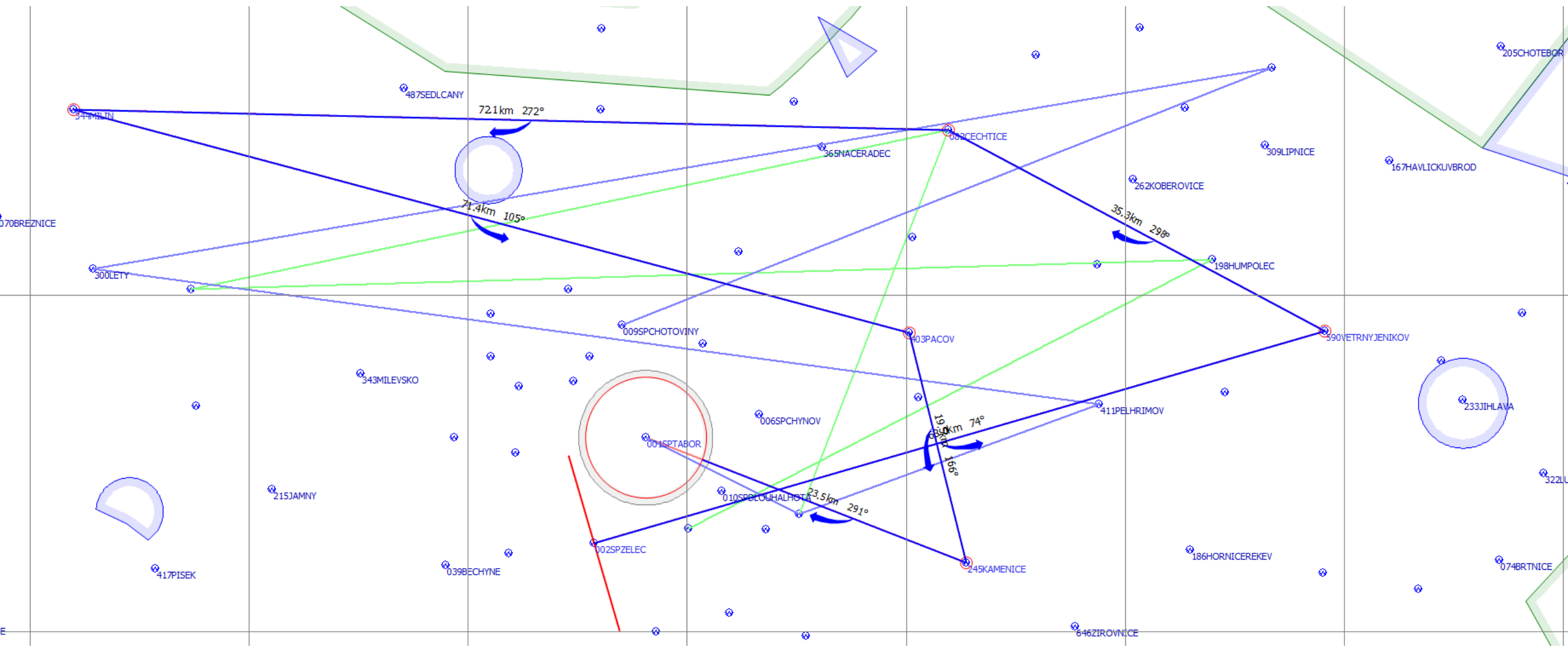
TASK FOR STANDARD CLASS



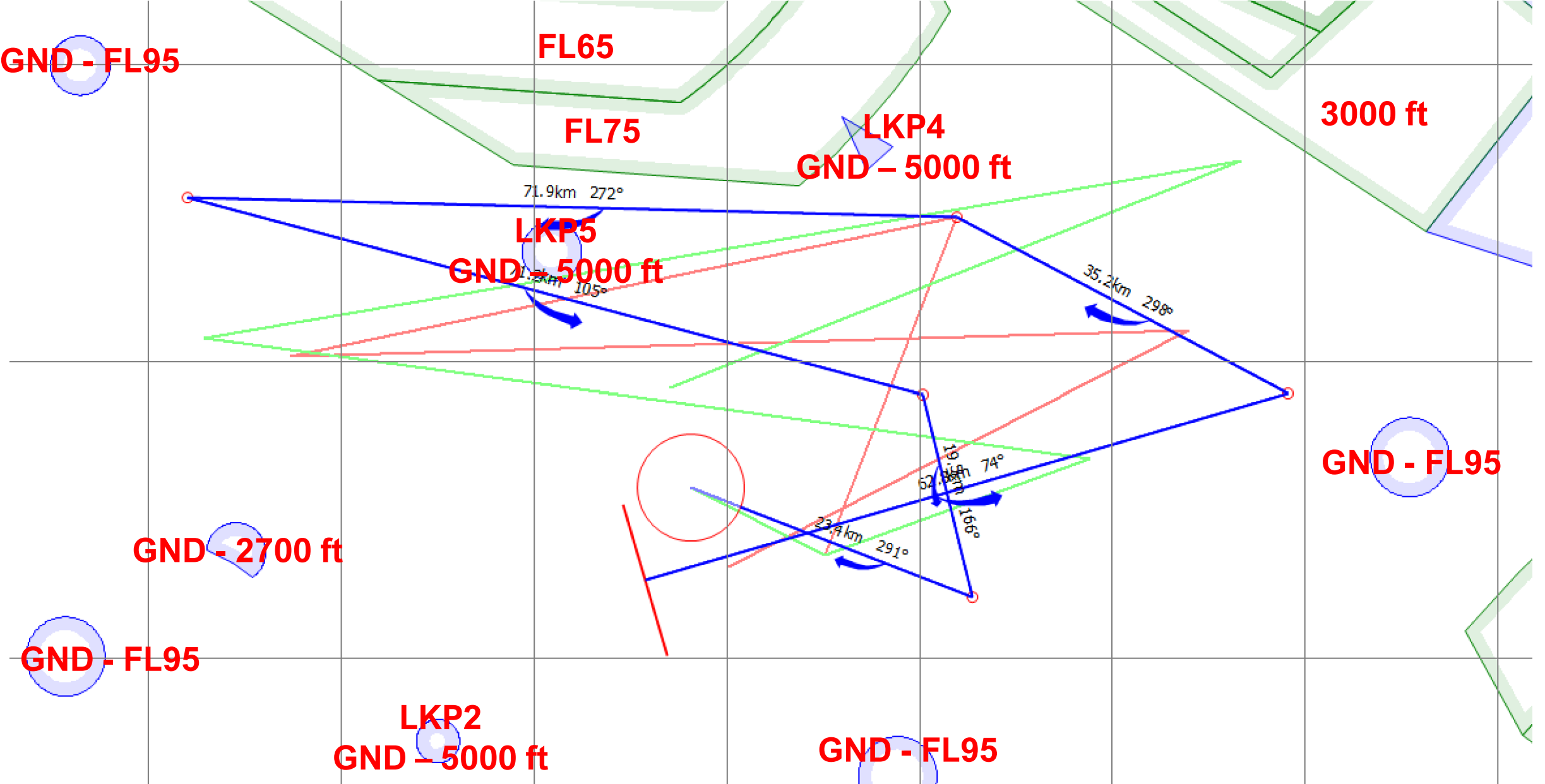
TASK FOR 15M CLASS



TASK OVERLAY



AIRSPACE



GRID ORDER RWY 29

**ORDER OF CLASSES MAY CHANGE
ROW NUMBERS WILL BE KEPT CONSTANT**

**CLUB CLASS (42)
ROWS 1 - 9**

**15M CLASS (29)
ROWS 17 - 22**

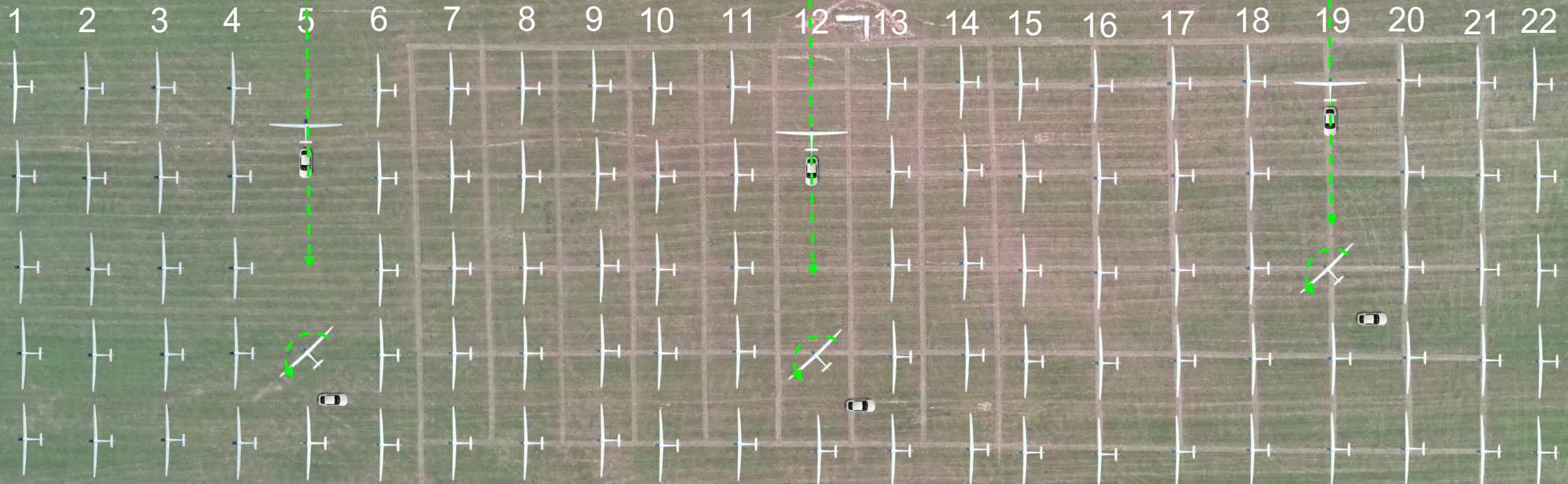
**STANDARD CLASS (34)
ROWS 10 - 16**

**IF A COMPETITOR IS
ASSIGNED ROW 1,
THEY WILL REMAIN IN
ROW 1 FOR THE
ENTIRE
CHAMPIONSHIPS BUT
LOCATION OF THE
ROW WILL CHANGE
EACH DAY**

GRID RWY 29

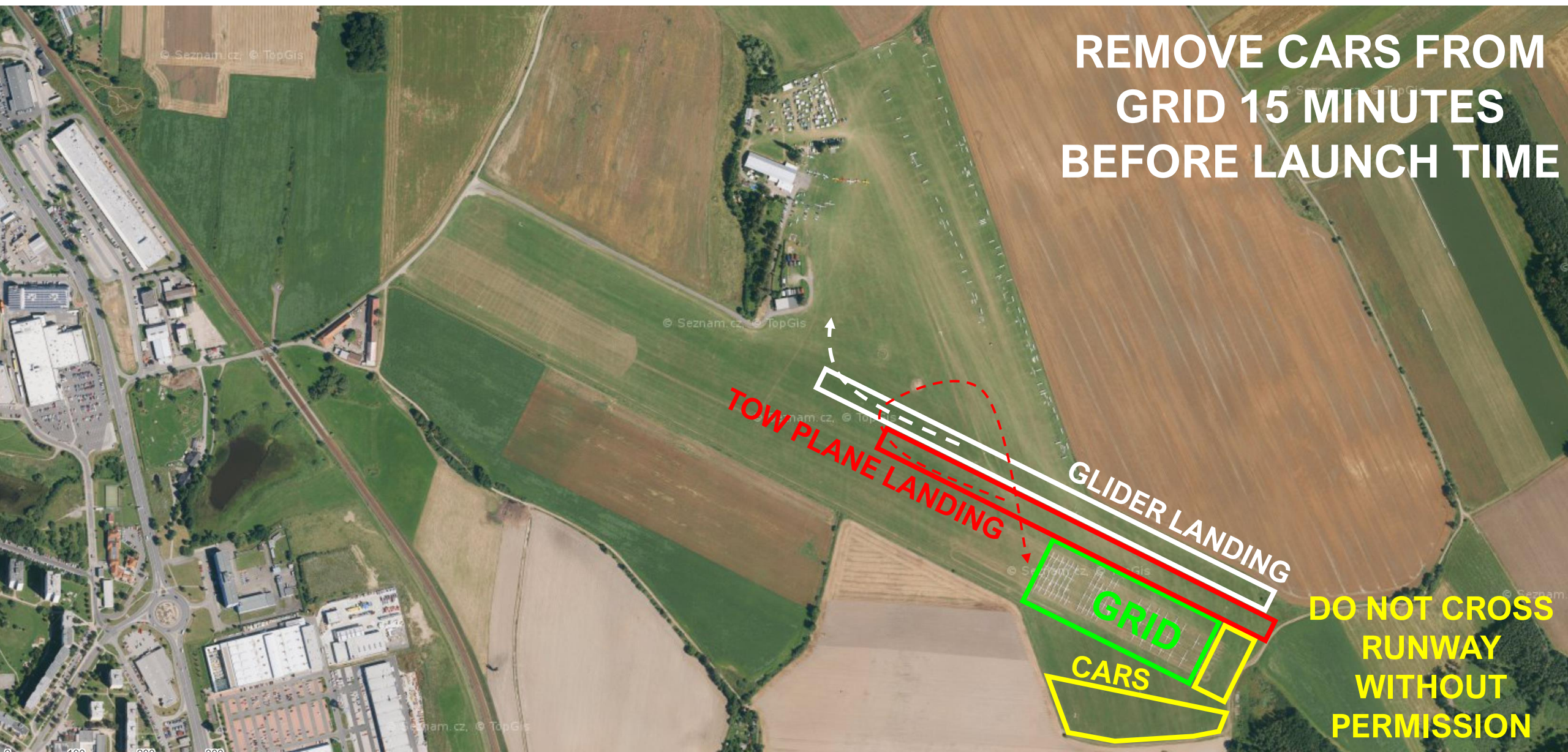


FOLLOW MARKING ON GROUND
COME FROM THE NORTH SIDE
BUILD ROWS FROM SOUTH TO NORTH



TAKE-OFF RWY 29

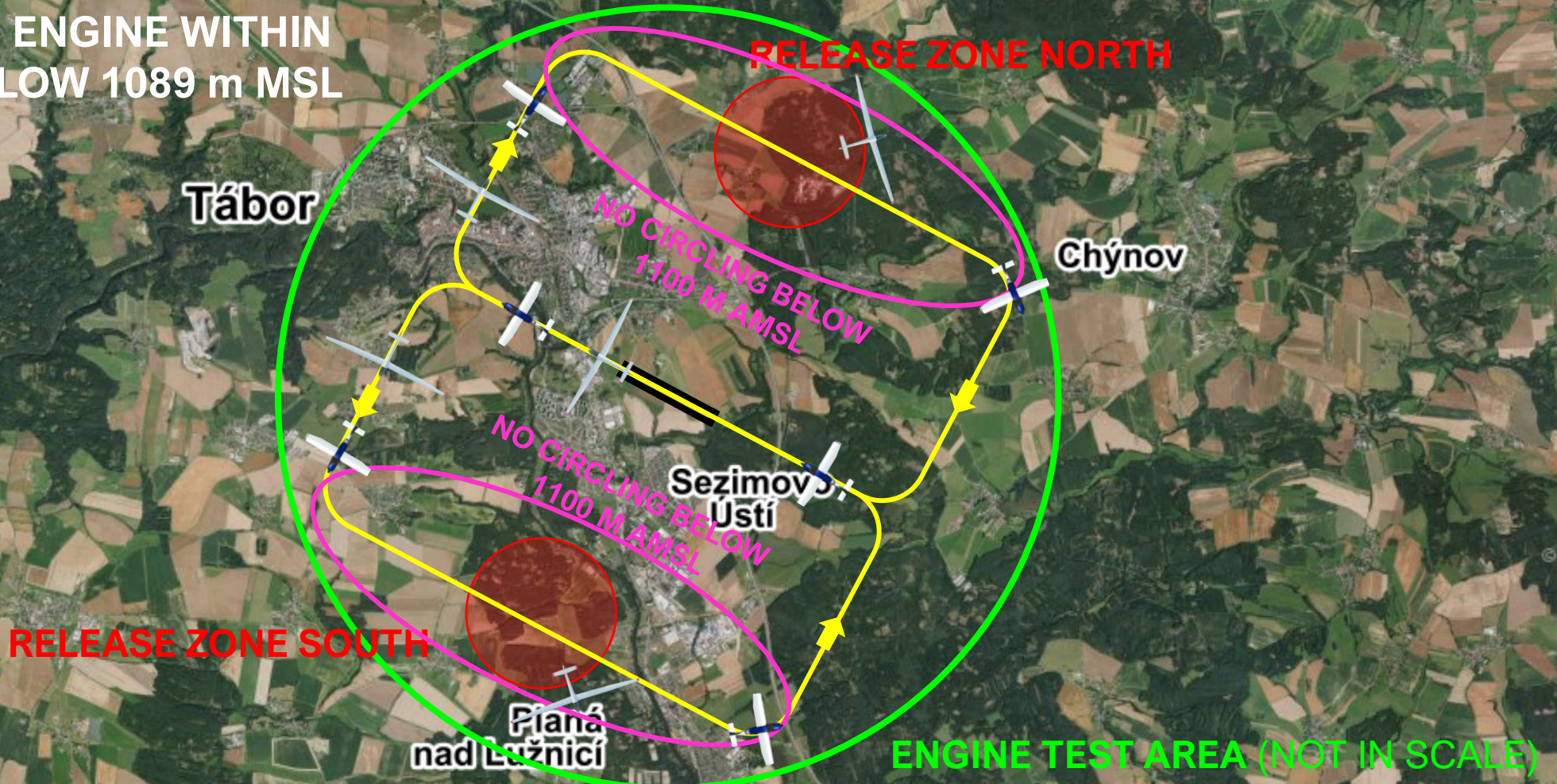
REMOVE CARS FROM
GRID 15 MINUTES
BEFORE LAUNCH TIME



DO NOT CROSS
RUNWAY
WITHOUT
PERMISSION

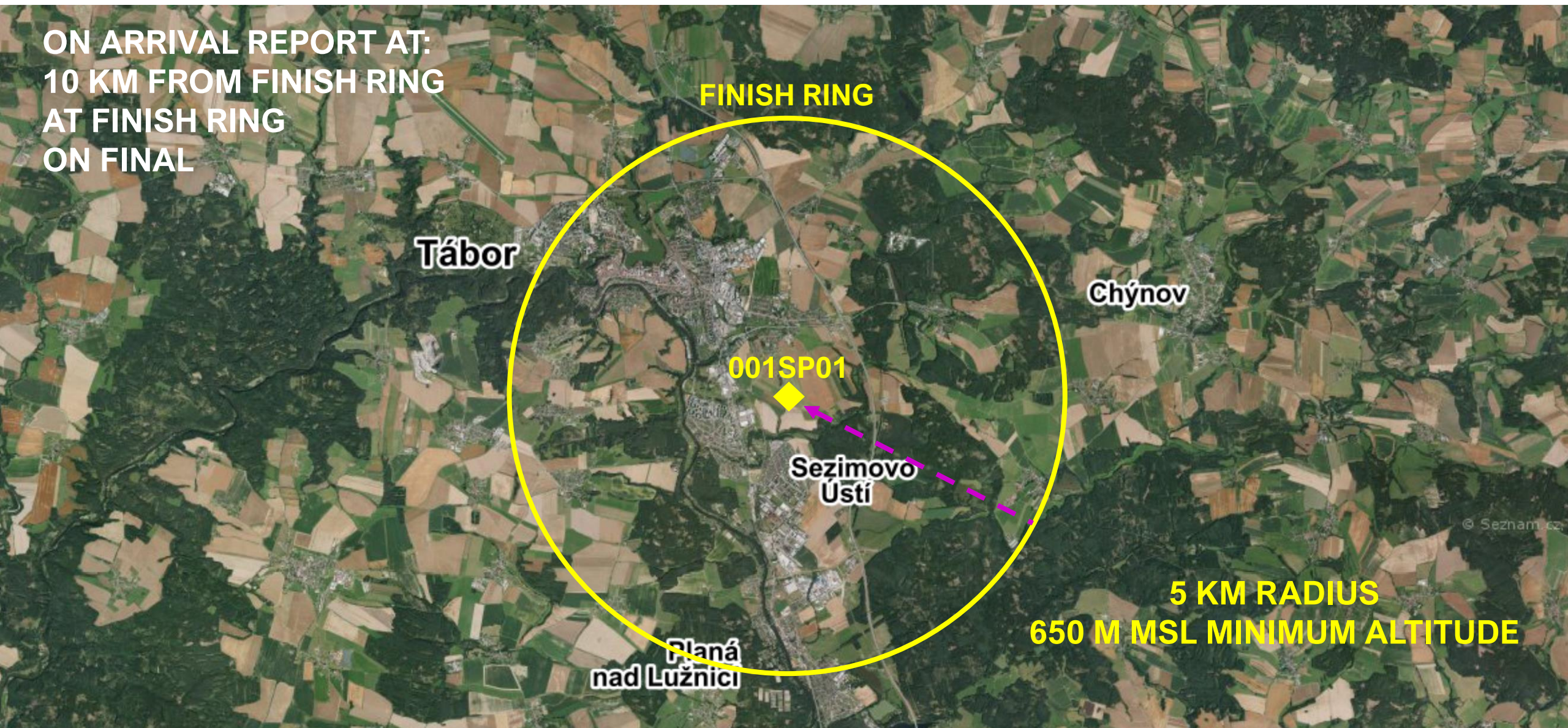
AEROTOWS RWY 29

FOR SELF-LAUNCH FOLLOW
SAME PROCEDURE
TURN OFF THE ENGINE WITHIN
TEST AREA BELOW 1089 m MSL



FINISH RWY 29

ON ARRIVAL REPORT AT:
10 KM FROM FINISH RING
AT FINISH RING
ON FINAL

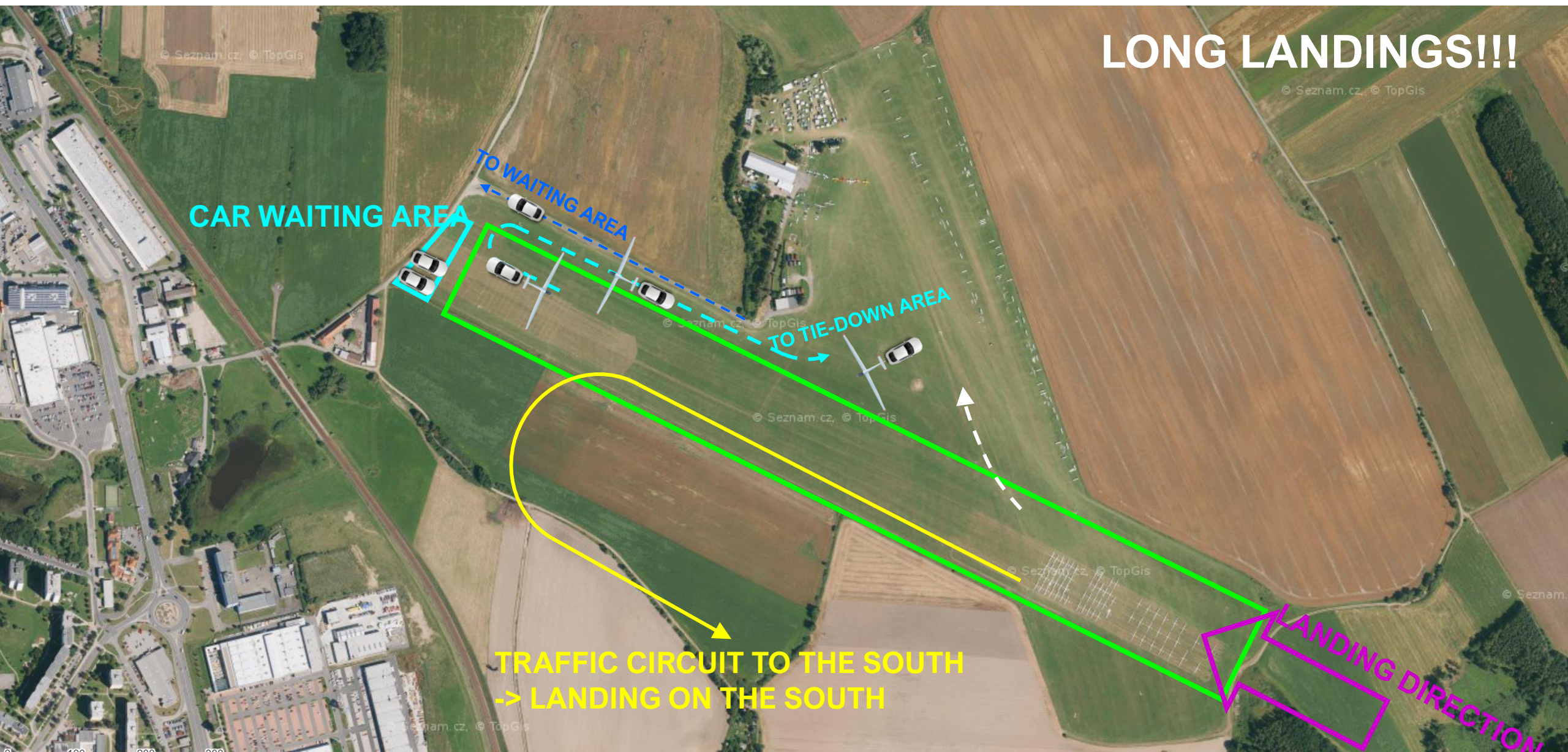


LANDING RWY 29

EGC
2024



LONG LANDINGS!!!



ENERGY CONTROL

— ENERGY CONTROL

NOT IN USE TODAY

PRE-START ALTITUDE LIMIT

— PRE-START ALTITUDE LIMIT
1500m MSL

PEV START PROCEDURE

— PEV WAIT TIME

8 MINUTES

— PEV START WINDOW

5 MINUTES

— MAXIMUM NUMBER OF STARTS: 3

START LINE OPENING



- START LINE WILL OPEN 30 MINUTES AFTER
LAST LAUNCH IN CLASS

IGC FILE DELIVERY

- SEND ALL FILES TO IGC@POHODA.COM
- **30 MINUTES FOR FILE DELIVERY**
- INCLUDE CN IN EMAIL SUBJECT
- ENSURE CORRECT FILE HEADER
- **DO NOT UPLOAD TO SOARINGSPOT!!!**
- 1 SECOND FIX RATE

ENGINE TEST PROCEDURE

- START ENGINE WITHIN 5 MINUTES AFTER
RELEASE
- RUN ENGINE FOR MAXIMUM OF TWO
MINUTES
- REMAIN WITHIN ENGINE TEST AREA

SAFETY

- LOOK OUT, LOOK OUT, LOOK OUT
- STAY HYDRATED
- FLY SAFE

INFORMATION FOR TODAY



- RUNWAY IN USE TODAY: **29**
- FIRST LAUNCH: **12:00**

EGC
2024



Jihočeský kraj



Air Navigation Services
of the Czech Republic

eclipse.

SKUPINA
GW JIHOTRANS

 **ABS JETS**

NOBIS GROUP
WWW.AGROPANEL.CZ

FOPO II.