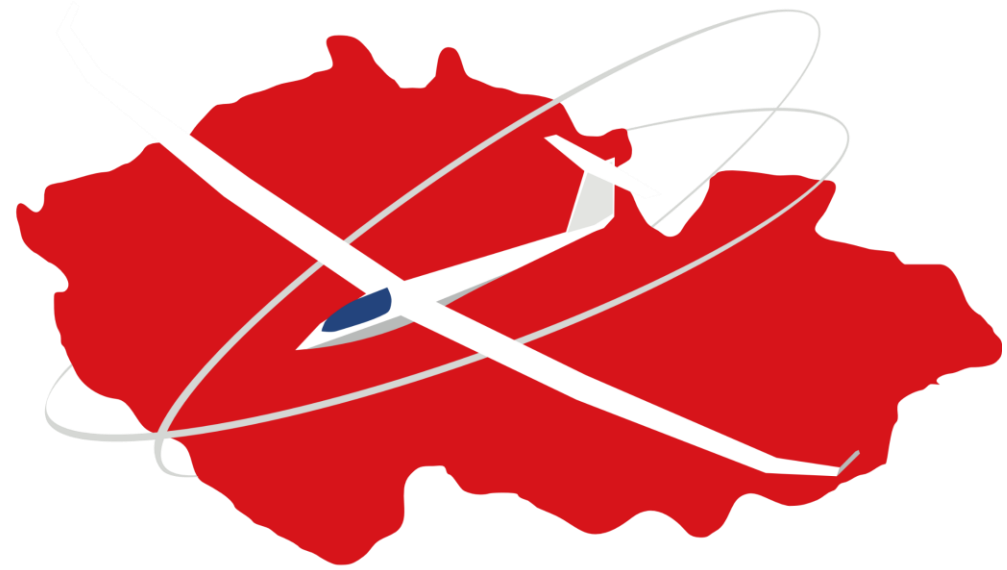


EGC
2024



3 August - 17 August 2024 ,Tábor, Czech Republic

SELFBRIEFING

Version 1.1 – Published 22/7/2024

AIRFIELD INFORMATION



Location: 3km SE of Tábor (49° 23' 28" N, 14° 42' 30" E)

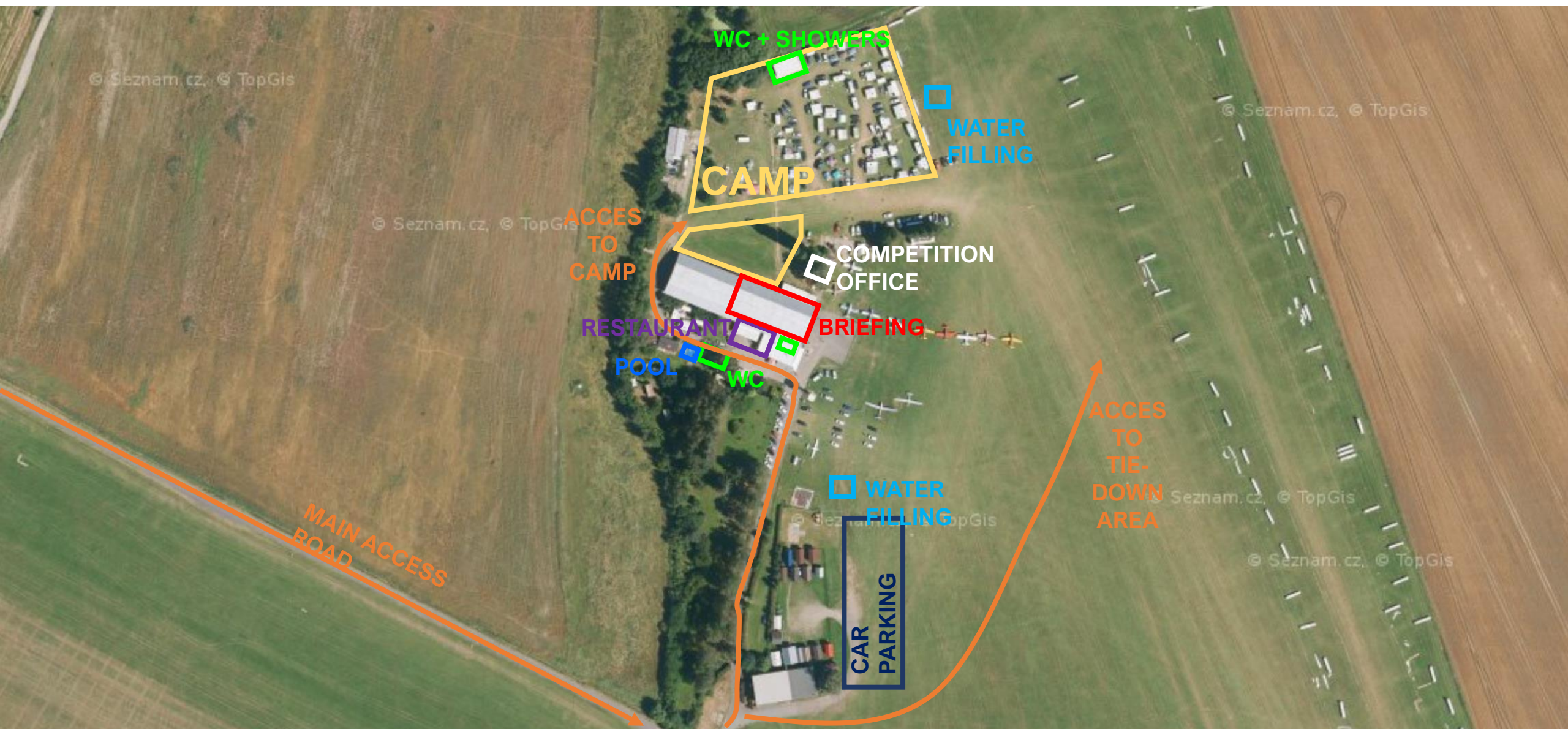
Elevation: 439 m

RWYs: 11/29 (grass, course: 116°/296°) and 16/34 (closed for the competition)

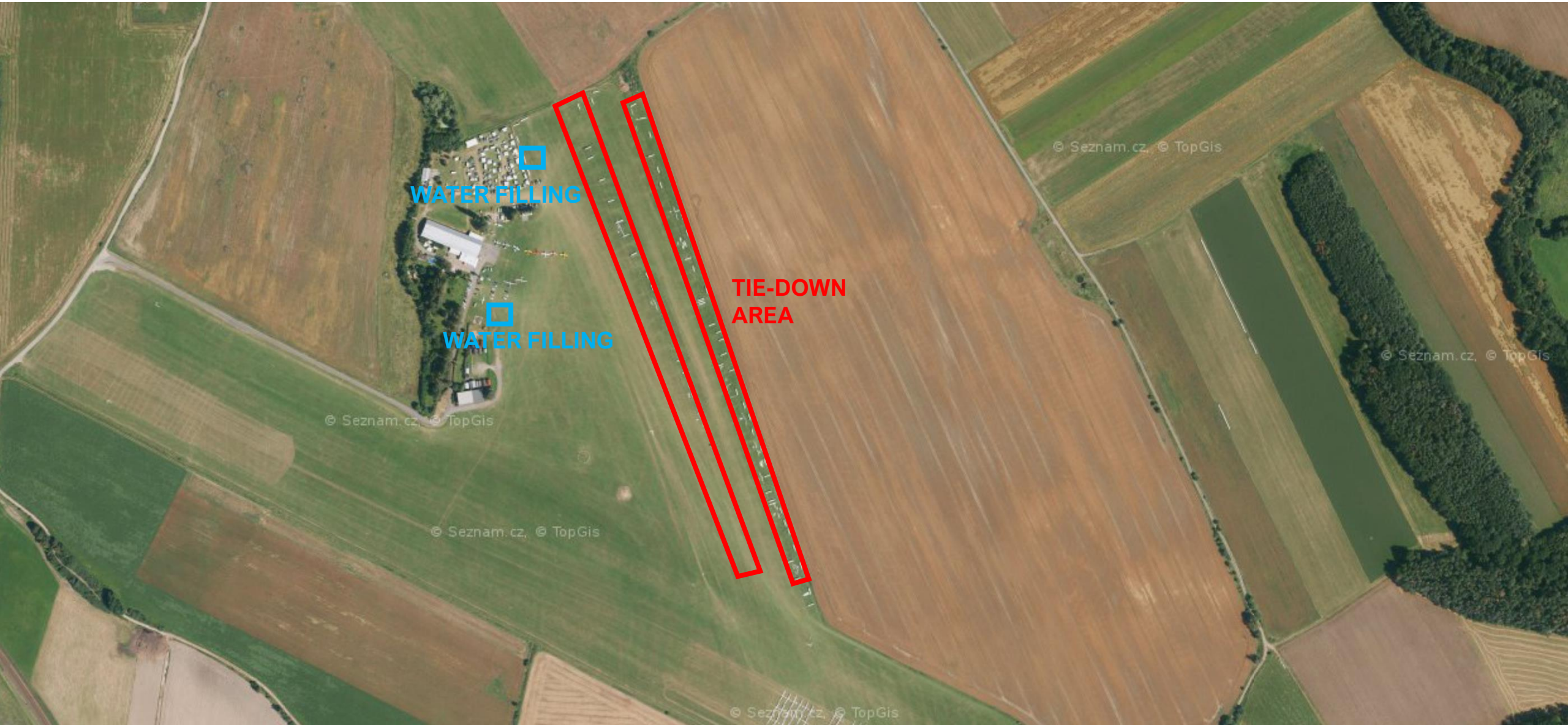
FREQ: Tabor Radio - 122.610 MHz

VFR Manual: https://aim.rlp.cz/vfrmanual/actual/lkta_text_en.html

AIRFIELD FACILITIES



GLIDER TIE-DOWN AREA



CONTEST SITE BOUNDARY



GRID ORDER RWY 29

**ORDER OF CLASSES MAY CHANGE
ROW NUMBERS WILL BE KEPT CONSTANT**

**CLUB CLASS (41)
ROWS 1 - 9**

**STANDARD CLASS (33)
ROWS 10 - 16**

**15M CLASS (30)
ROWS 17 - 22**

**IF A COMPETITOR IS
ASSIGNED ROW 1,
THEY WILL REMAIN IN
ROW 1 FOR THE
ENTIRE
CHAMPIONSHIPS BUT
LOCATION OF THE
ROW WILL CHANGE
EACH DAY**

GRID RWY 29

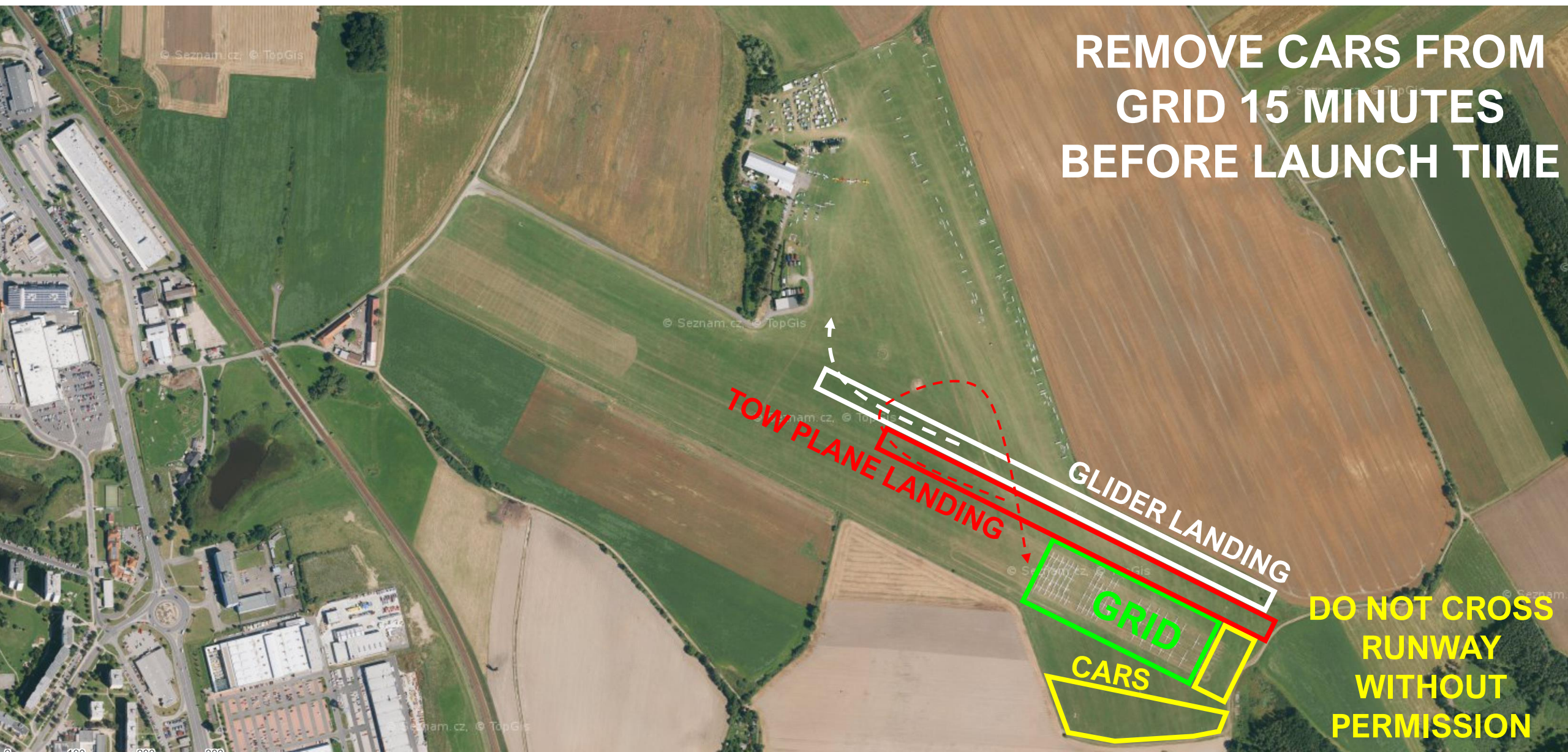


FOLLOW MARKING ON GROUND
COME FROM THE NORTH SIDE
BUILD ROWS FROM SOUTH TO NORTH



TAKE-OFF RWY 29

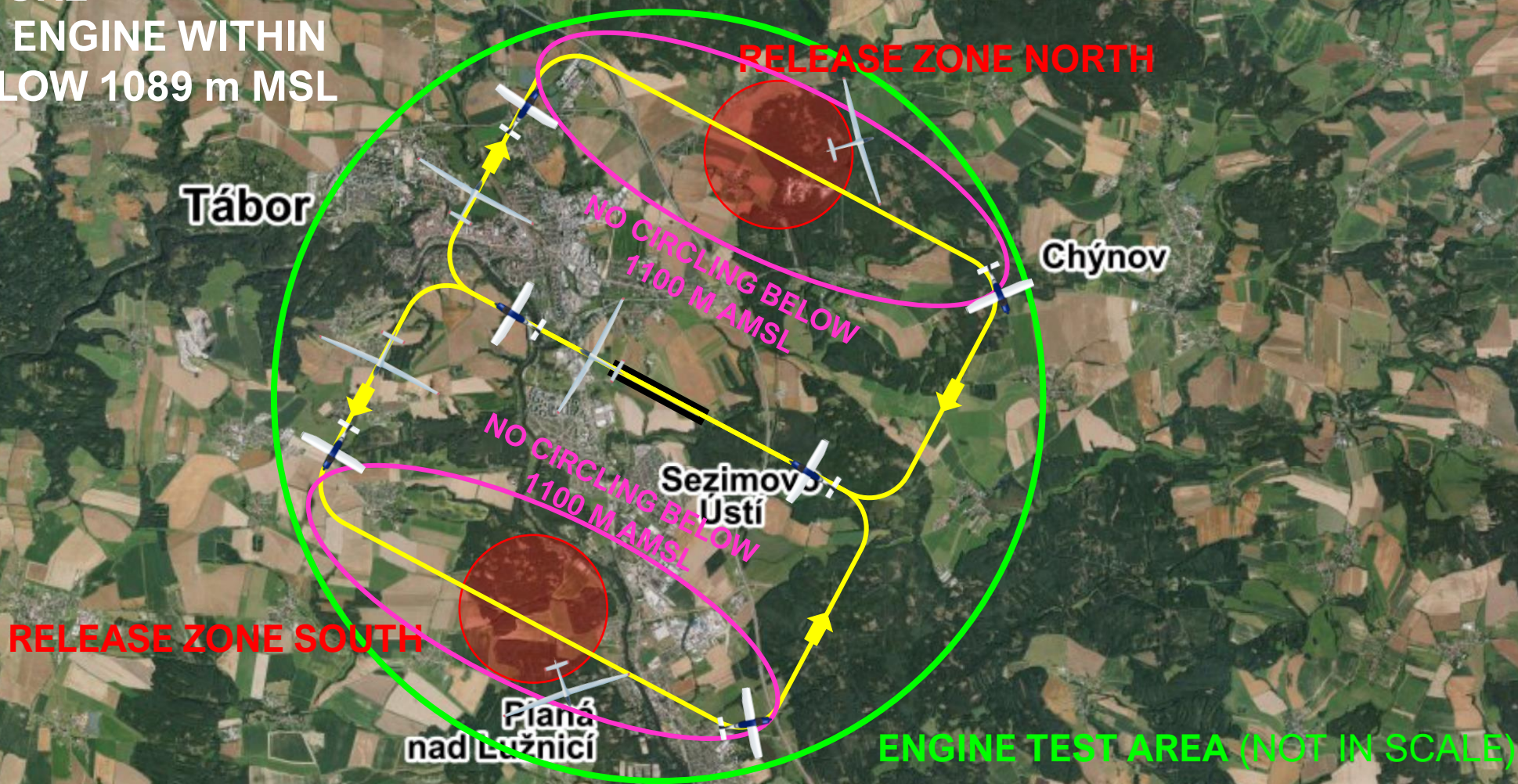
REMOVE CARS FROM
GRID 15 MINUTES
BEFORE LAUNCH TIME



DO NOT CROSS
RUNWAY
WITHOUT
PERMISSION

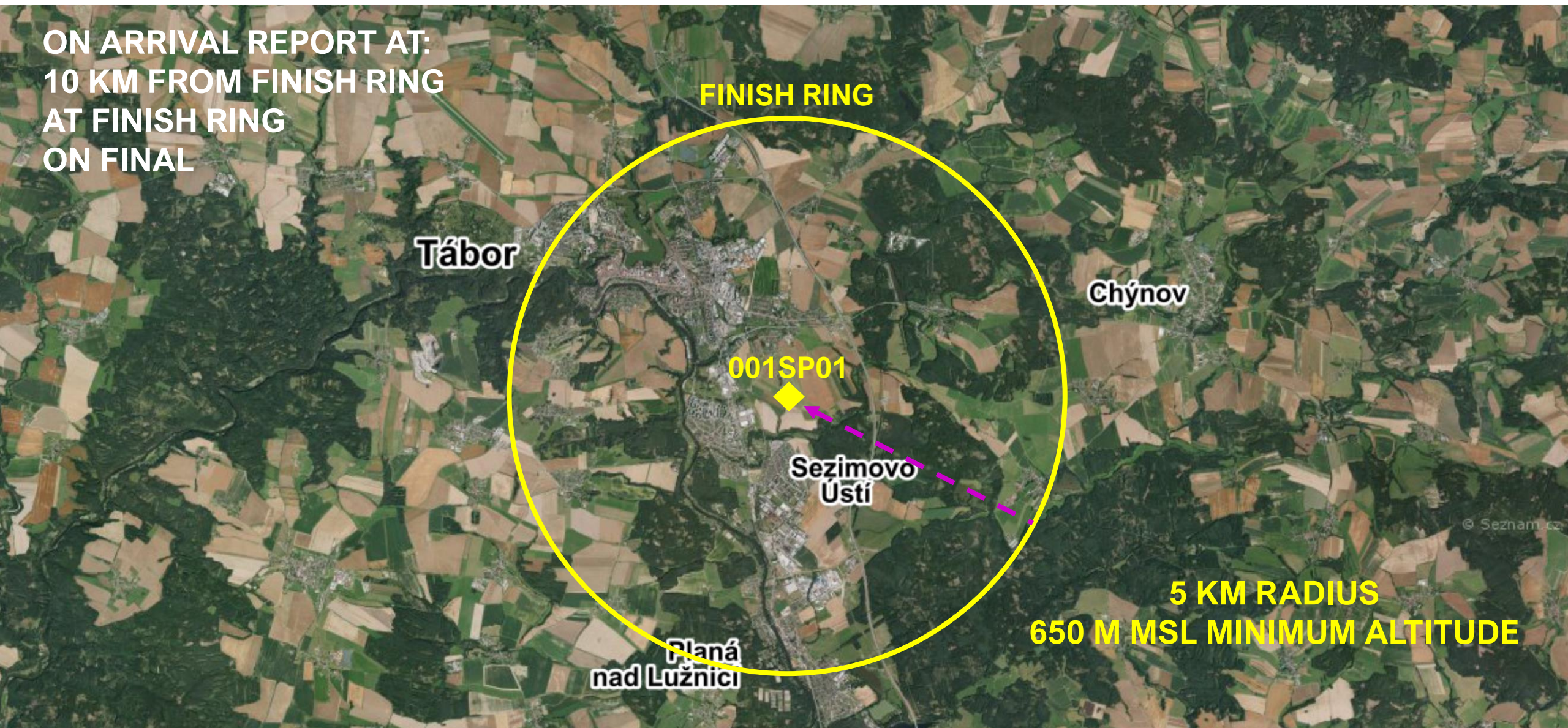
AEROTOWS RWY 29

FOR SELF-LAUNCH FOLLOW
SAME PROCEDURE
TURN OFF THE ENGINE WITHIN
TEST AREA BELOW 1089 m MSL



FINISH RWY 29

ON ARRIVAL REPORT AT:
10 KM FROM FINISH RING
AT FINISH RING
ON FINAL

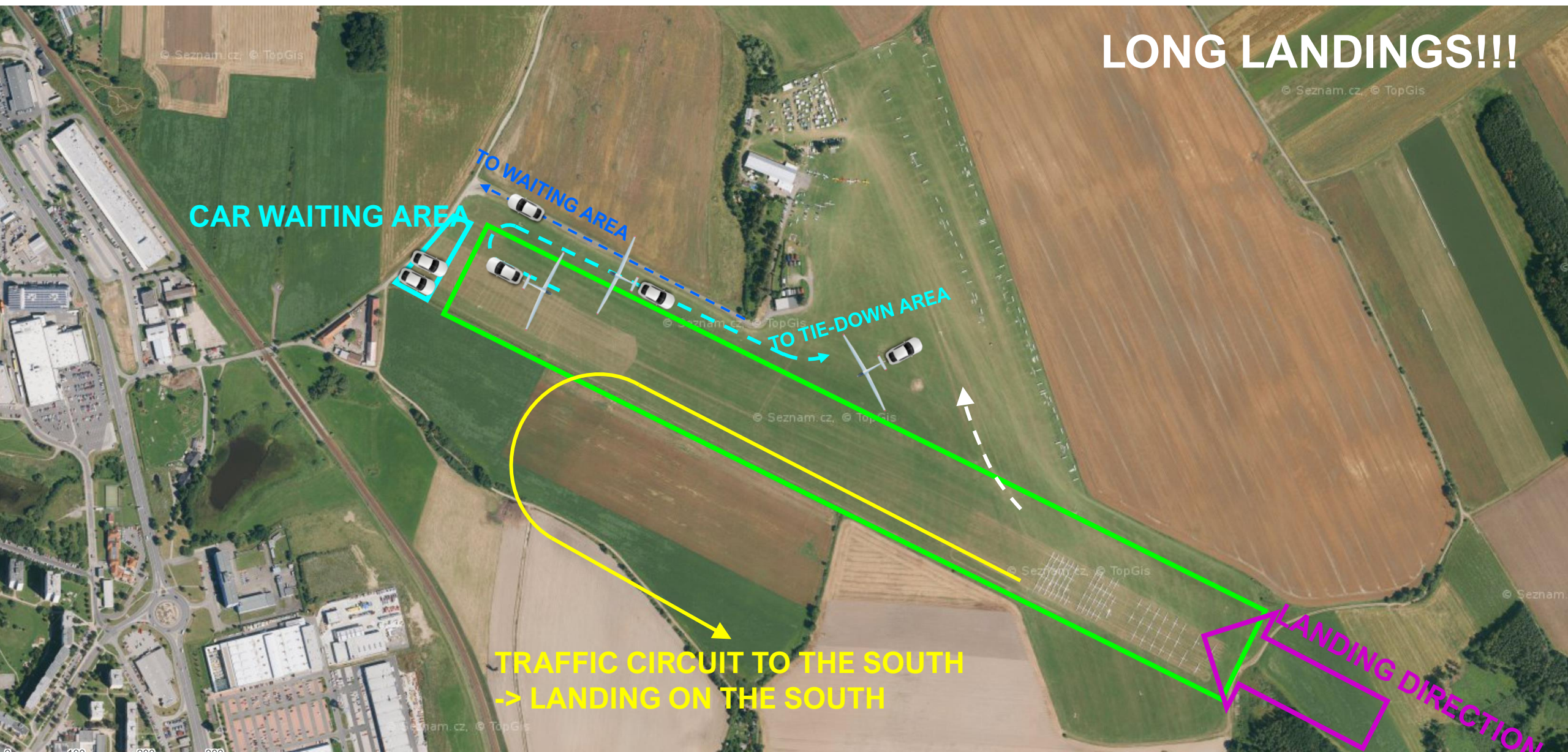


LANDING RWY 29

EGC
2024



LONG LANDINGS!!!



GRID ORDER RWY 11

**ORDER OF CLASSES MAY CHANGE
ROW NUMBERS WILL BE KEPT CONSTANT**

**15M CLASS (30)
ROWS 17 - 22**

**STANDARD CLASS (33)
ROWS 10 - 16**

**CLUB CLASS (40)
ROWS 1 - 9**

**IF A COMPETITOR IS
ASSIGNED ROW 1,
THEY WILL REMAIN IN
ROW 1 FOR THE
ENTIRE
CHAMPIONSHIPS BUT
LOCATION OF THE
ROW WILL CHANGE
EACH DAY**



GRID RWY 11



FOLLOW MARKING ON GROUND
COME FROM THE NORTH SIDE
BUILD ROWS FROM SOUTH TO NORTH



TAKE-OFF RWY 11

**DO NOT CROSS
RUNWAY
WITHOUT
PERMISSION**

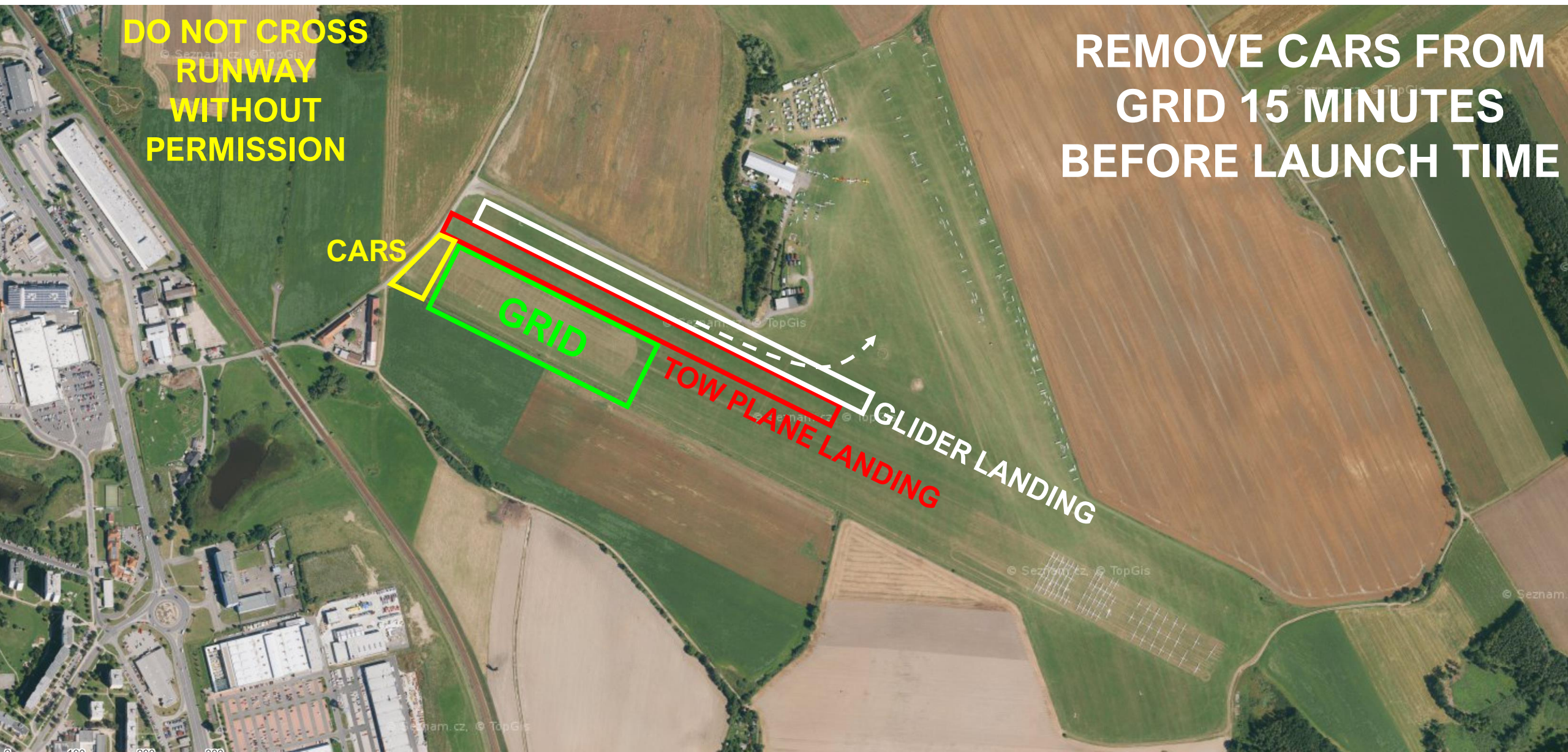
**REMOVE CARS FROM
GRID 15 MINUTES
BEFORE LAUNCH TIME**

CARS

GRID

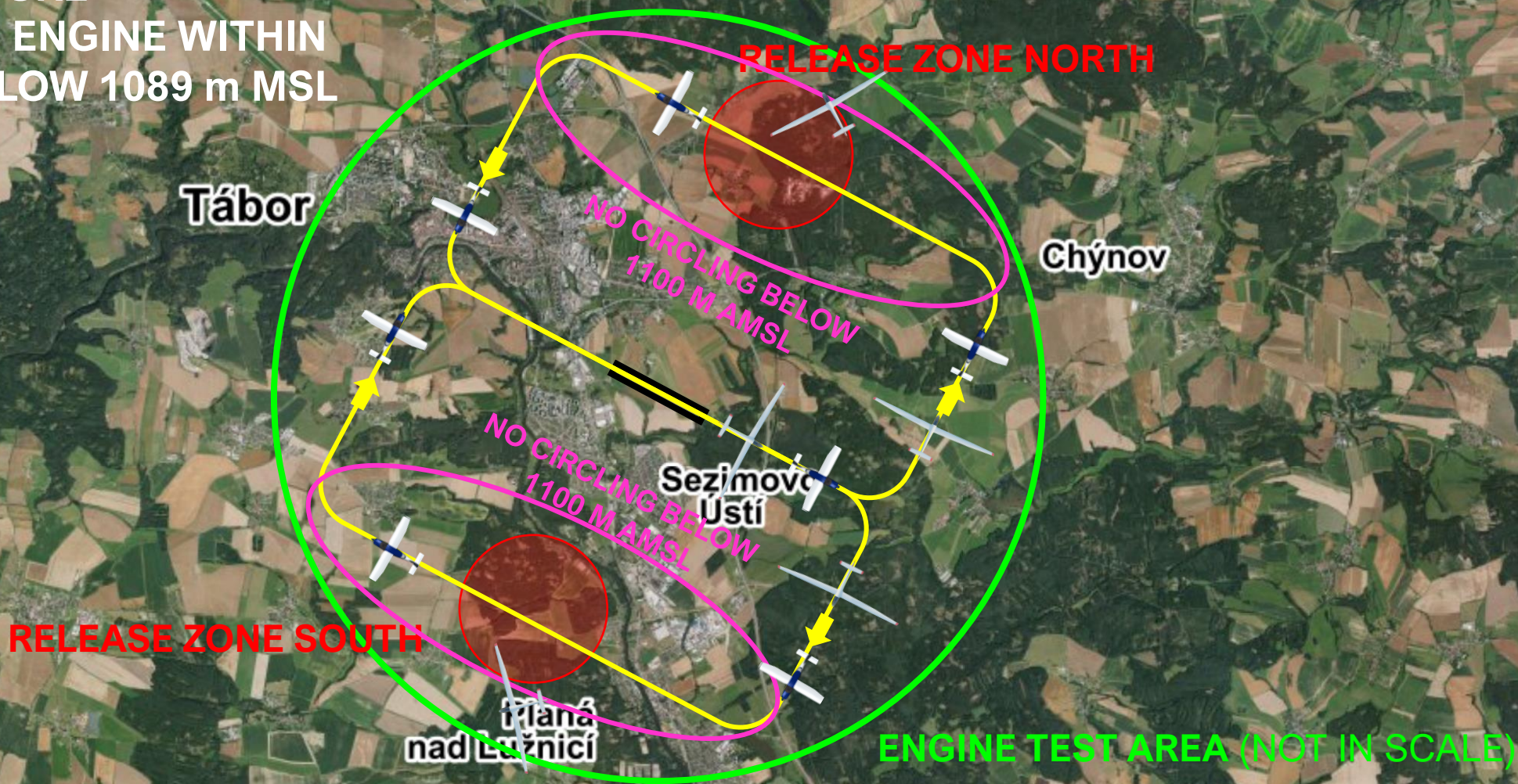
TOW PLANE LANDING

GLIDER LANDING



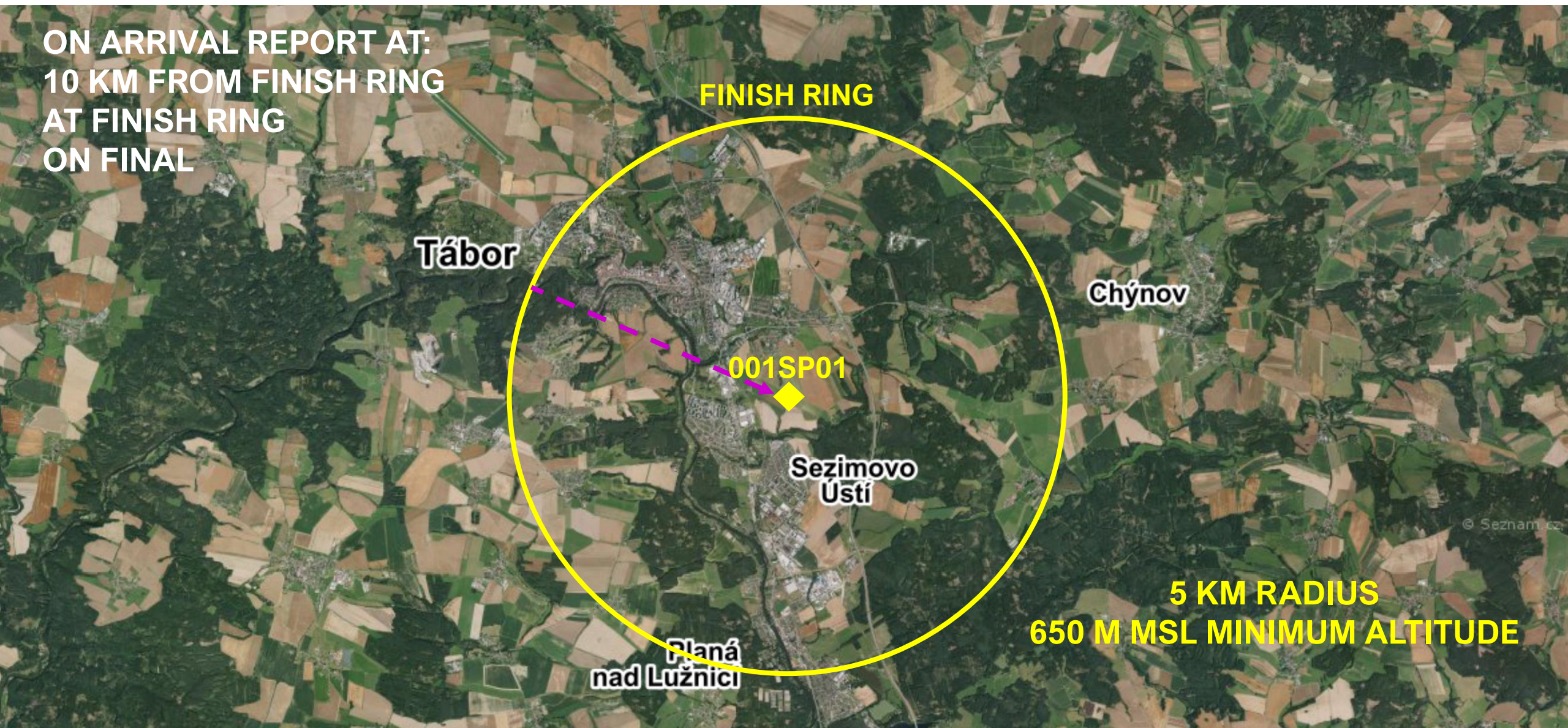
AEROTOWS RWY 11

FOR SELF-LAUNCH FOLLOW
SAME PROCEDURE
TURN OFF THE ENGINE WITHIN
TEST AREA BELOW 1089 m MSL



FINISH RWY 11

ON ARRIVAL REPORT AT:
10 KM FROM FINISH RING
AT FINISH RING
ON FINAL

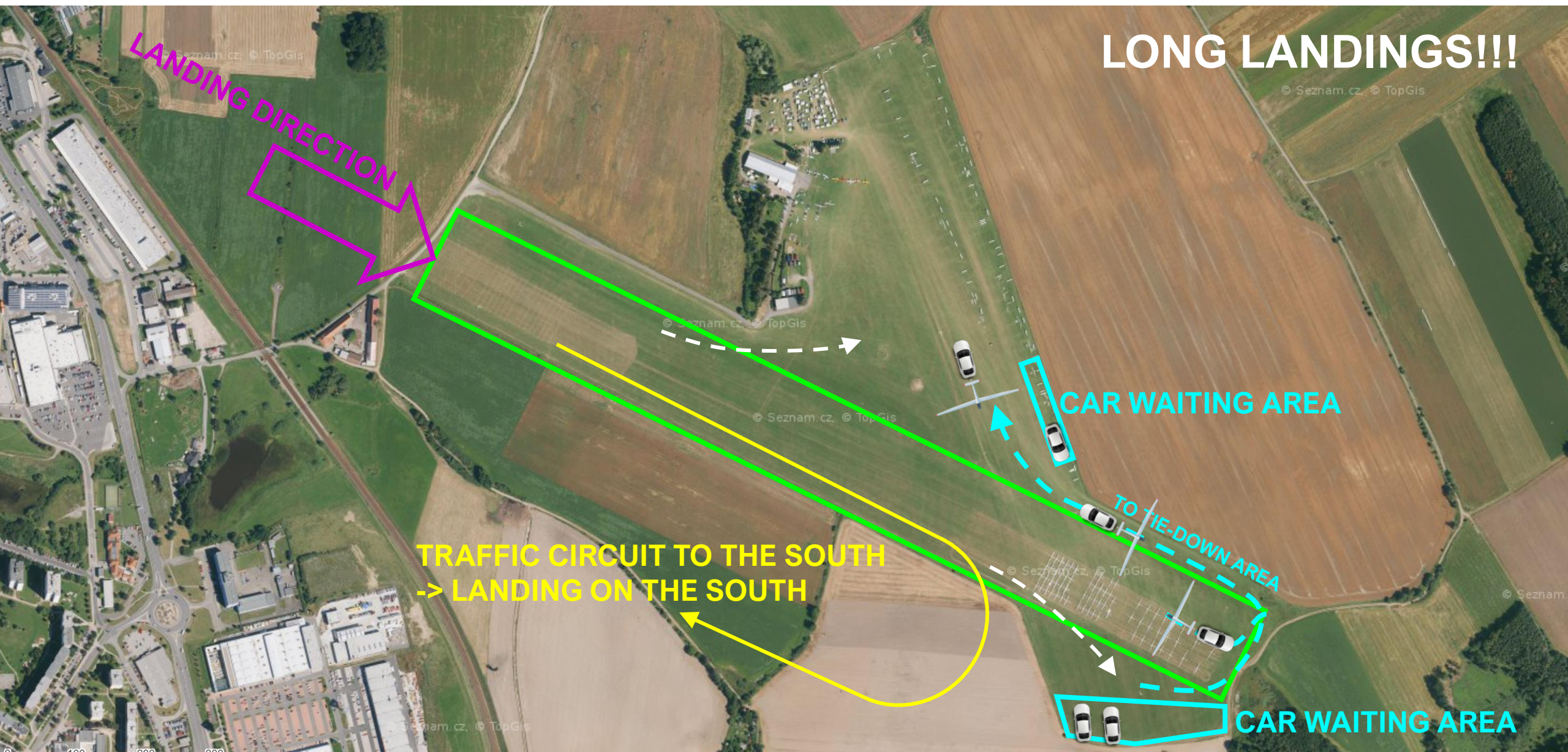


LANDING RWY 11

EGC
2024



LONG LANDINGS!!!



ALTITUDE LIMITS

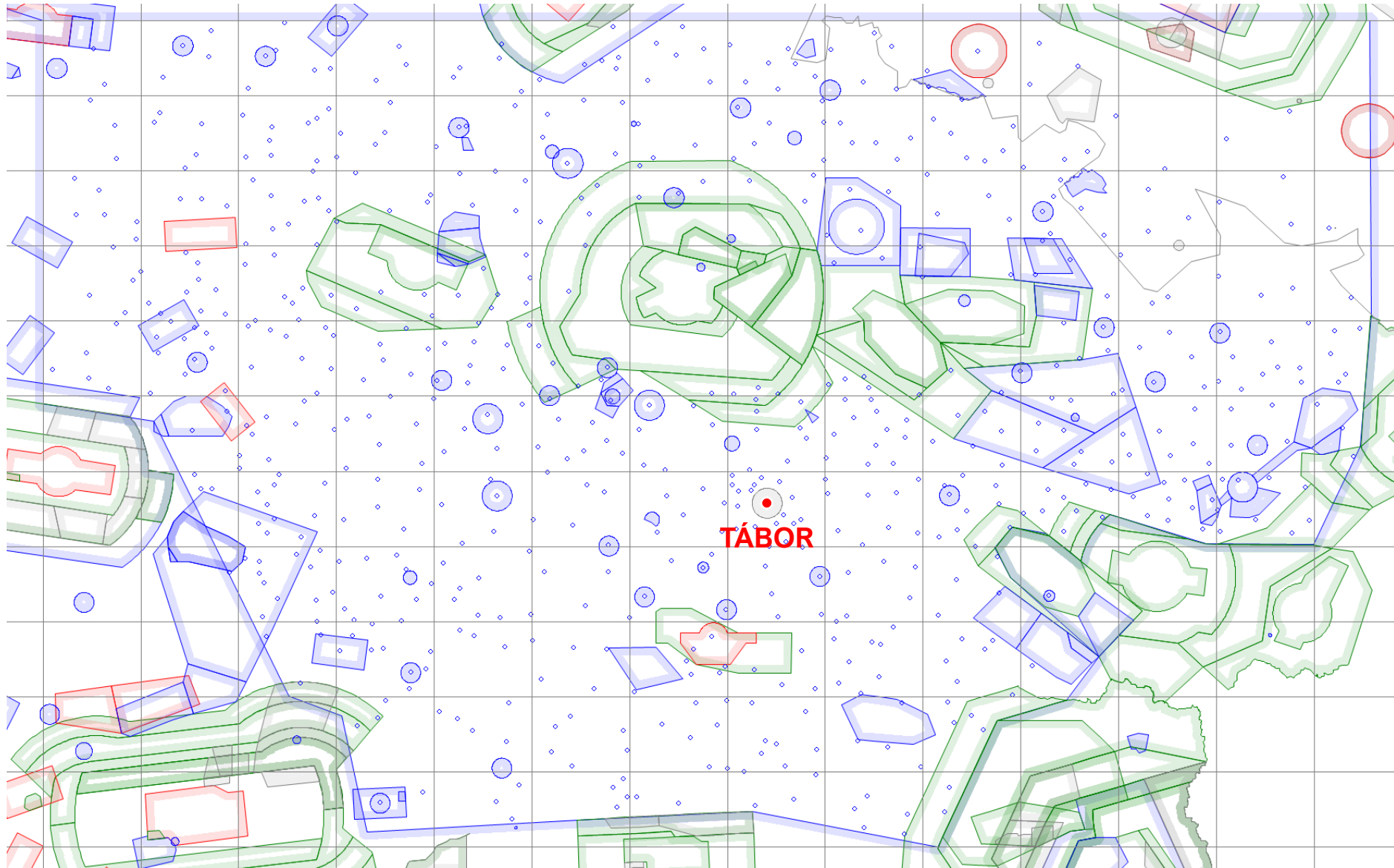


Contest Area Altitude Limit: **FL95**

Sporting Limits Not Applied

COMPETITION AREA

EGC
2024



MAIN INFO SUMMARY



Competition frequency – Tabor COMPETITION – **122.710**

Safety Frequency – **118.590**

RWY: 11/29

Airfield elevation: 439 m

Start line radius: 7.5 km (15 km total length)

Finish ring: 5 km radius, 650 m MSL minimum finish altitude

Contest Area Altitude Limit: FL 95