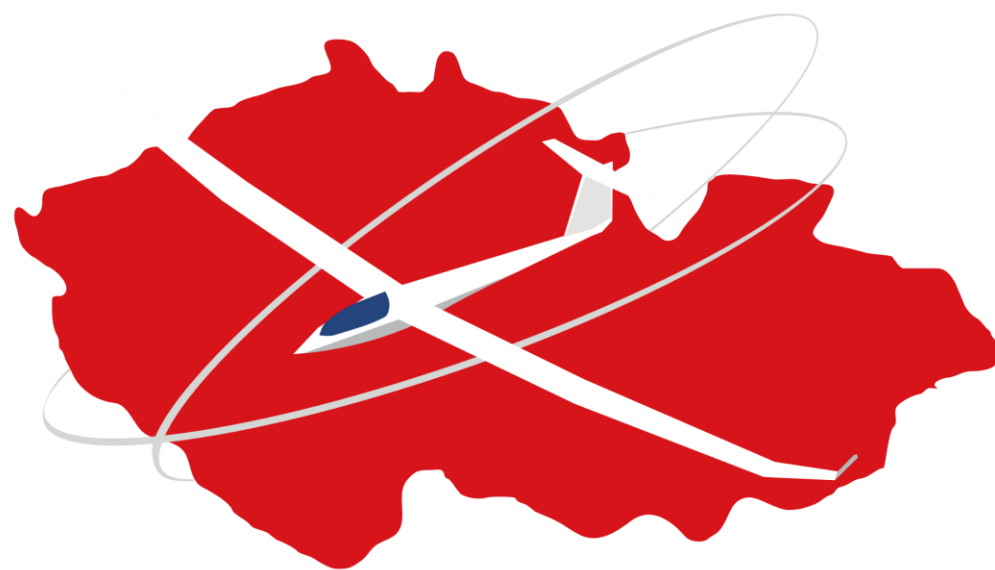


EGC
2024



3 August - 17 August 2024 ,Tábor, Czech Republic

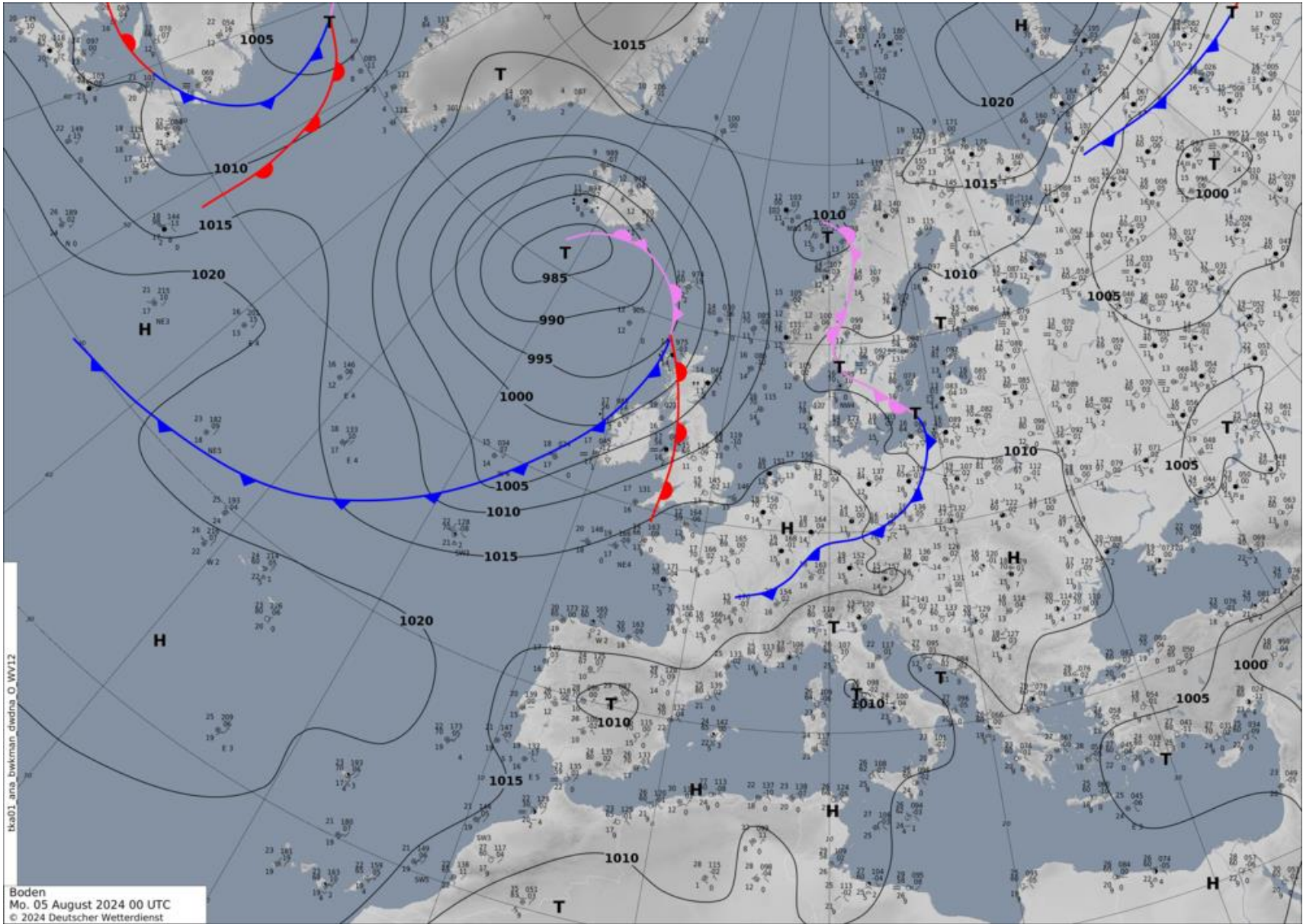
DAILY BRIEFING

COMPETITION DAY 1 – 05/08/2024

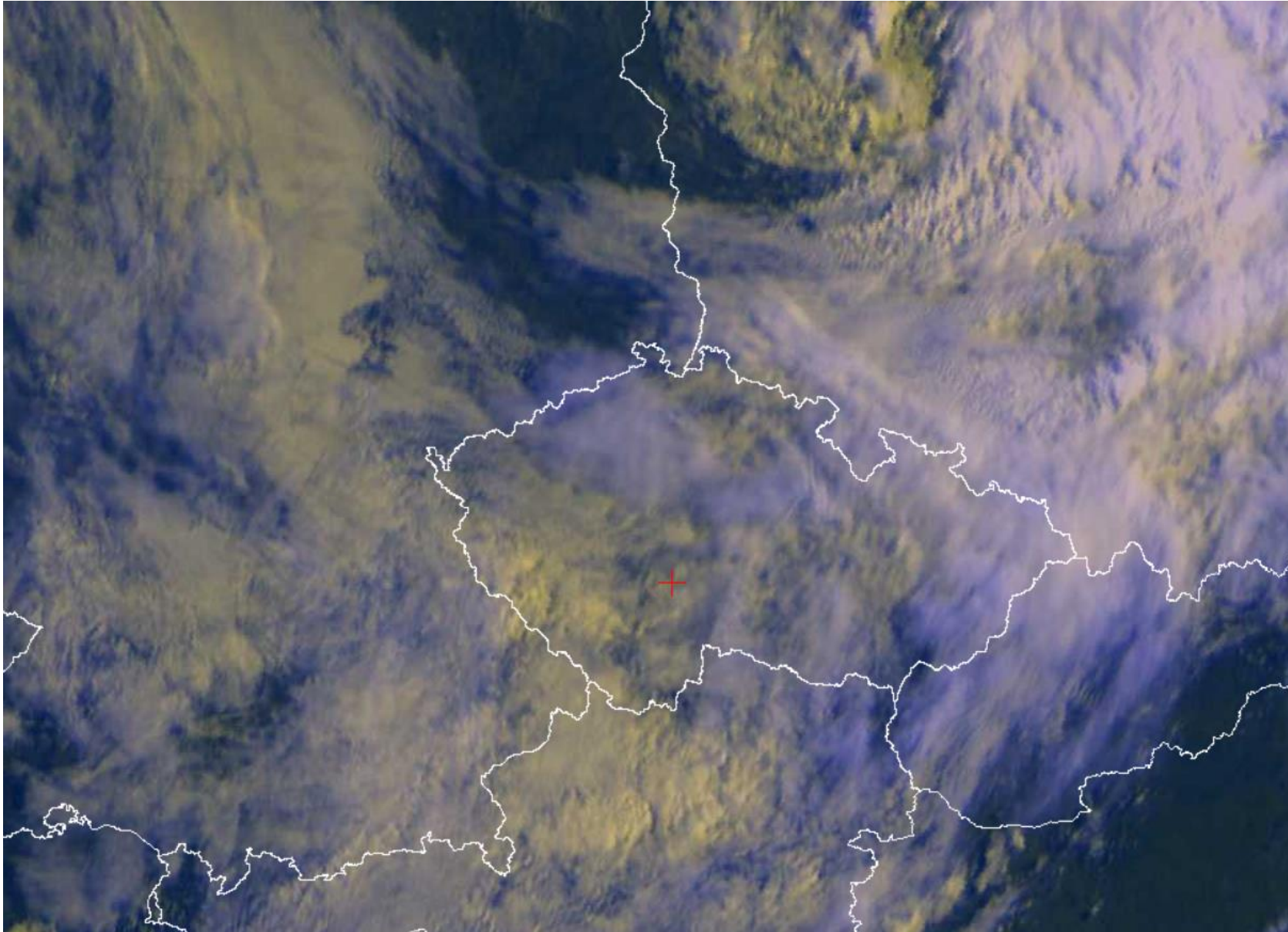
REMARKS TO YESTERDAY

- DO NOT TOUCH THE CIRCUIT BREAKERS IN
THE WASHROOMS
- IF YOU KEEP DOING IT THERE WILL BE NO
HOT WATER ANY MORE

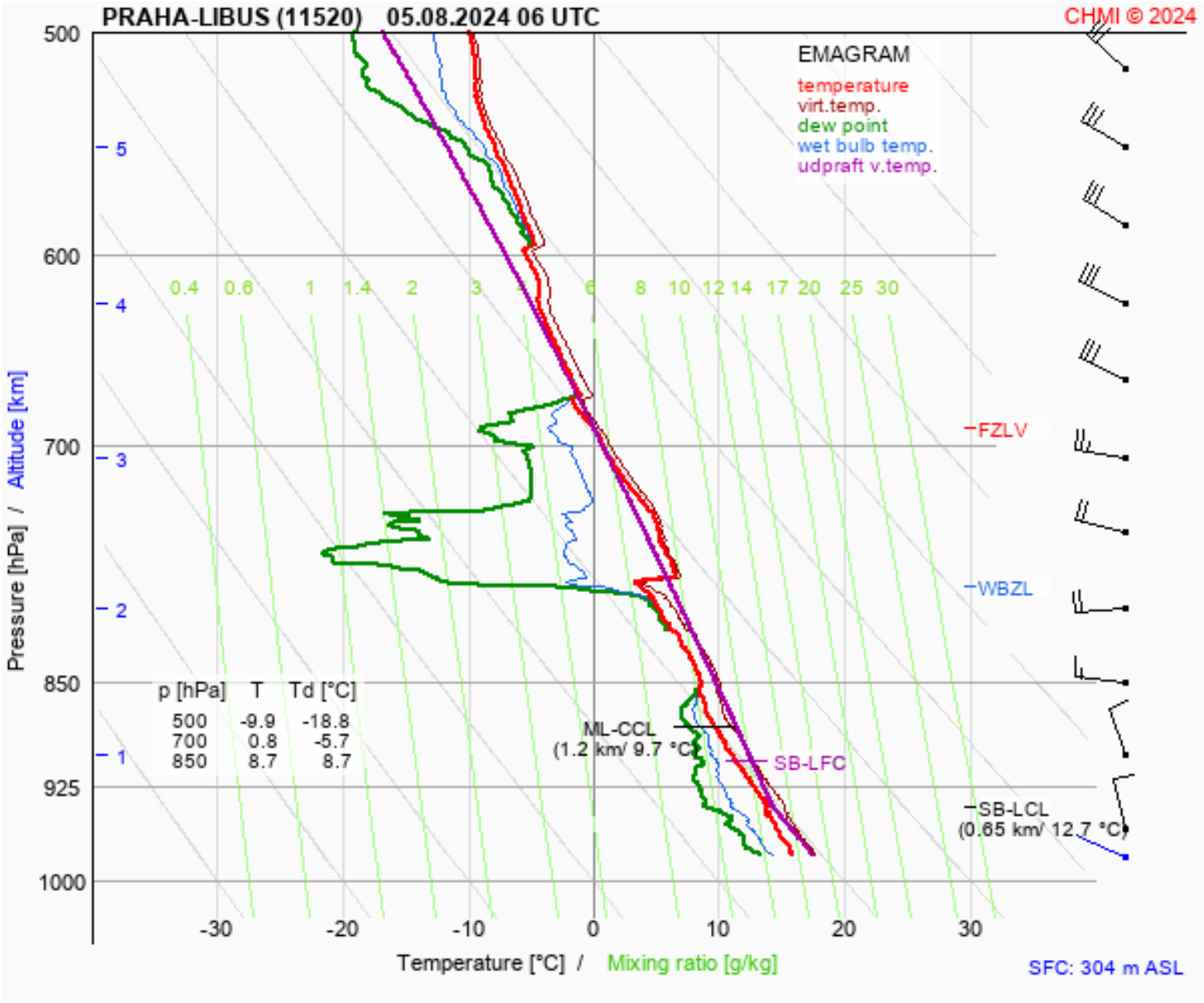
WEATHER



WEATHER



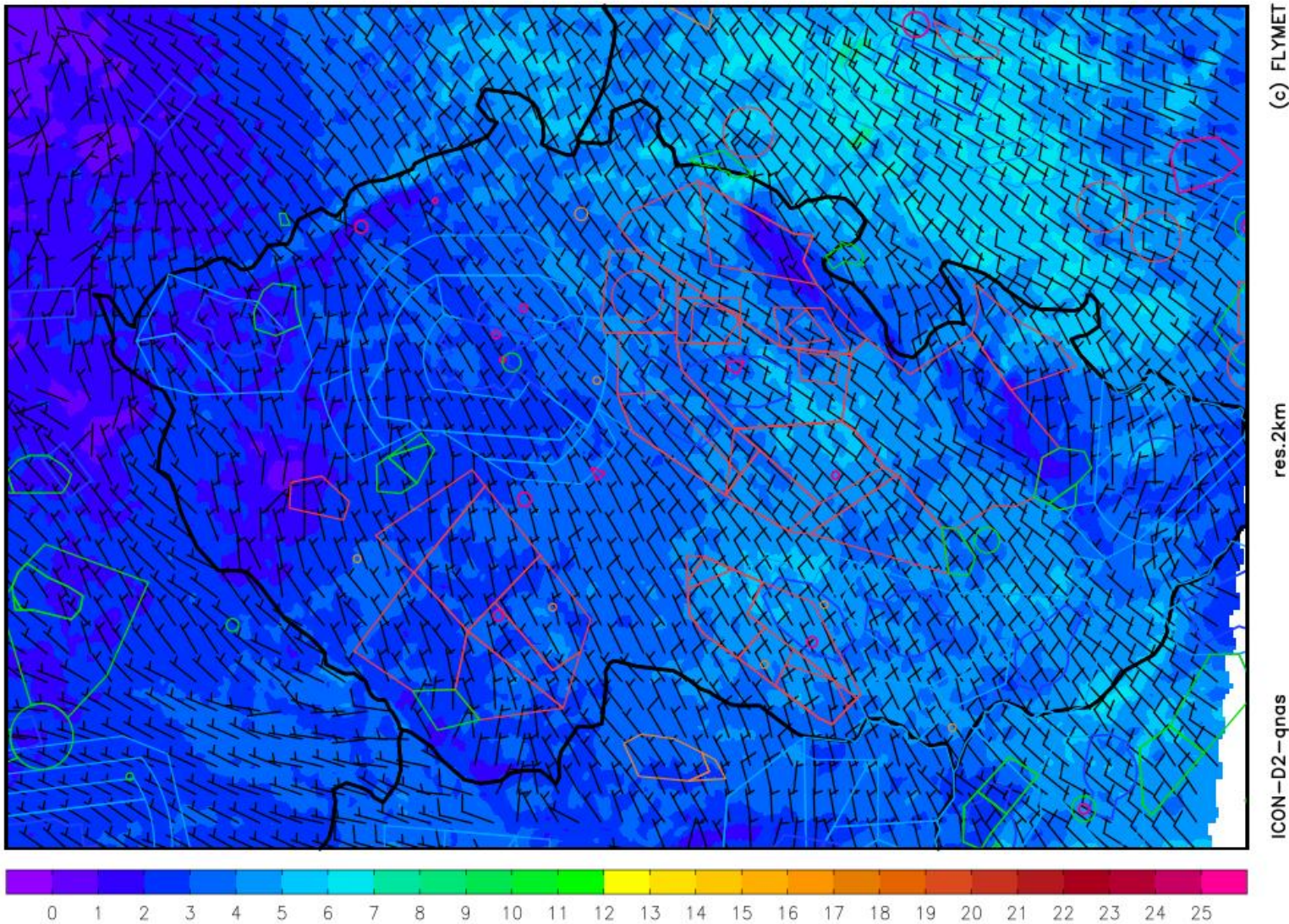
WEATHER



WEATHER

wind at 10m [m/s]

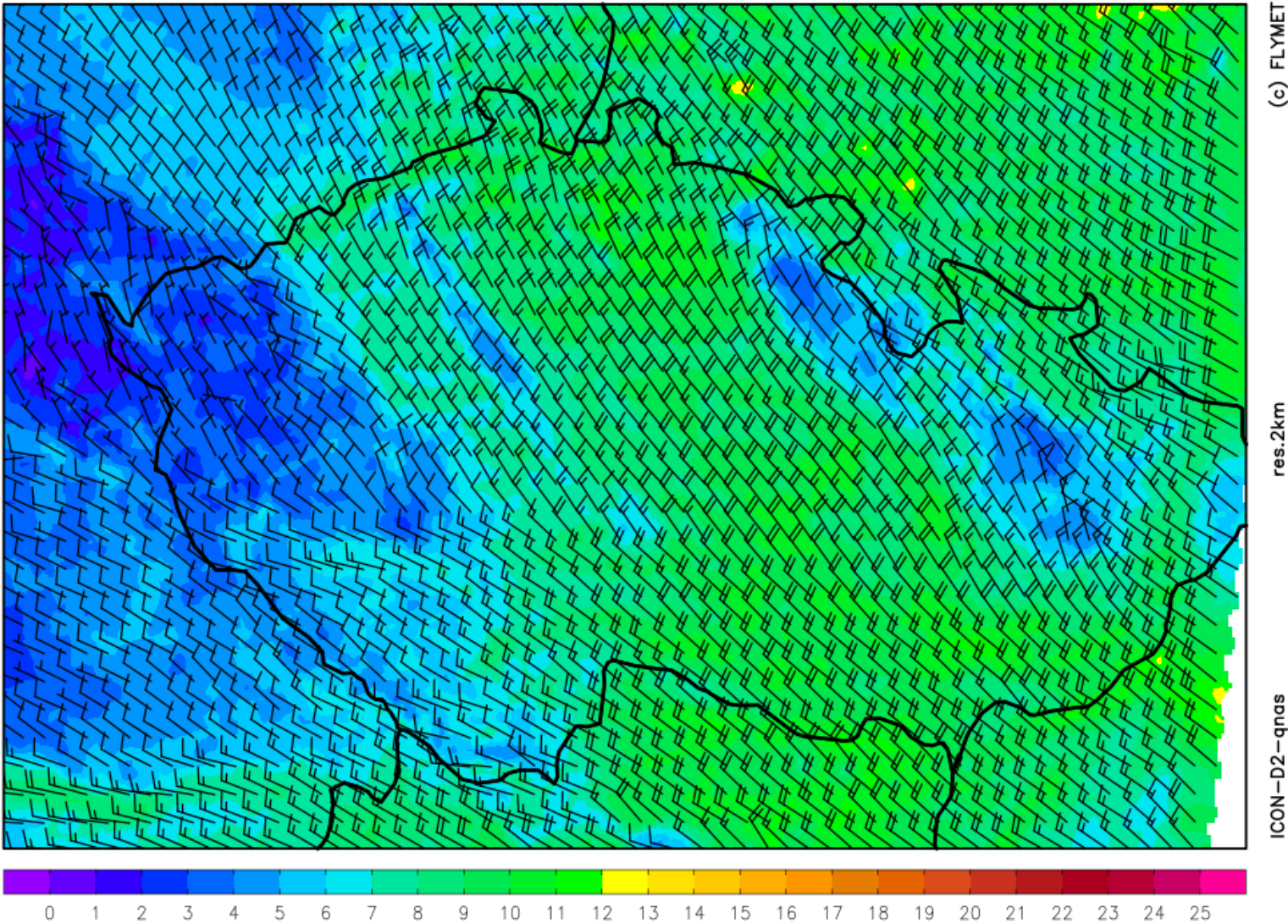
monday 05.08. 2024 12:00 utc



WEATHER

wind 1500 m [m/s]

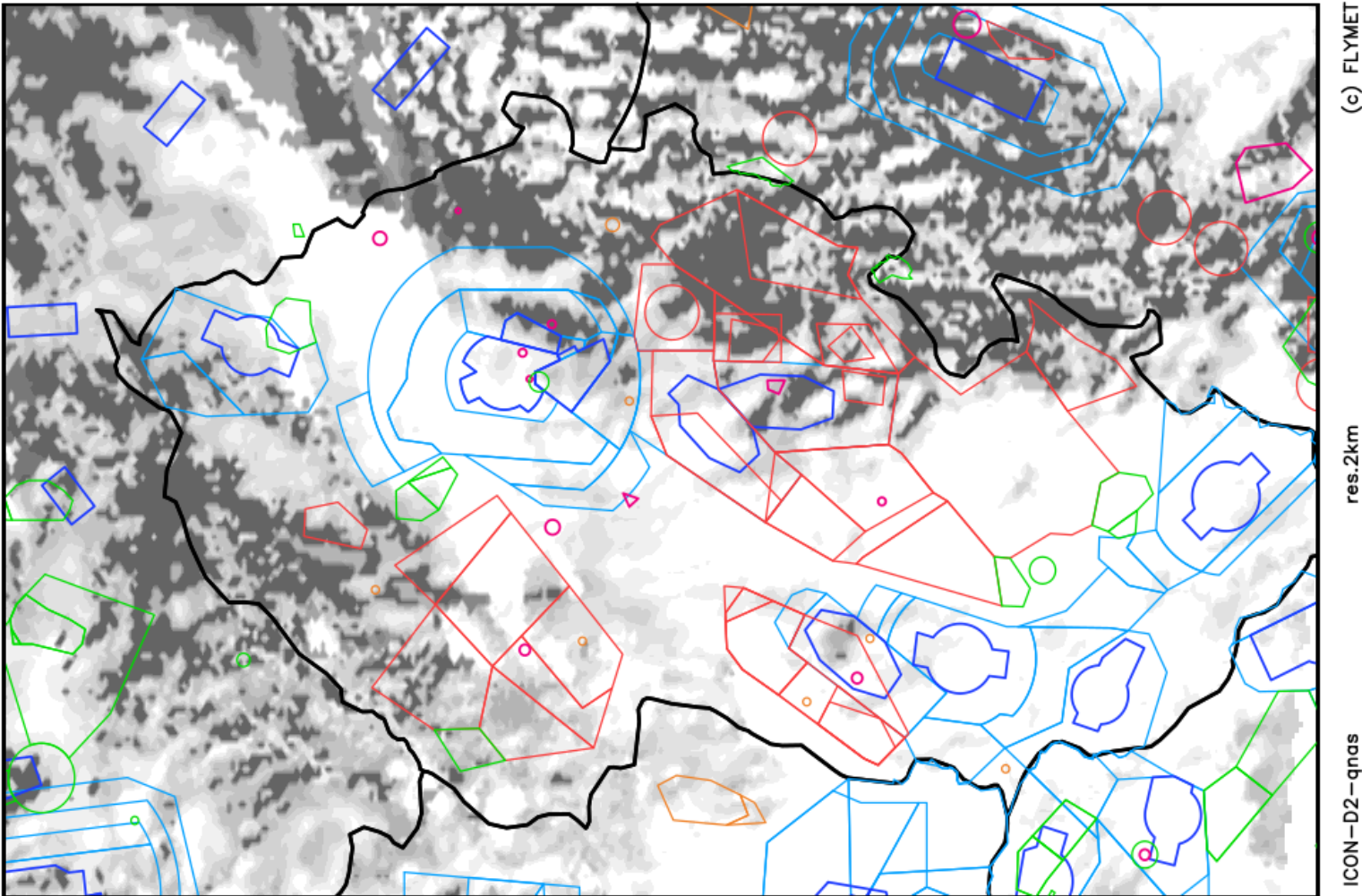
monday 05.08. 2024 12:00 utc



WEATHER

clouds

monday 05.08. 2024 12:00 utc



skc

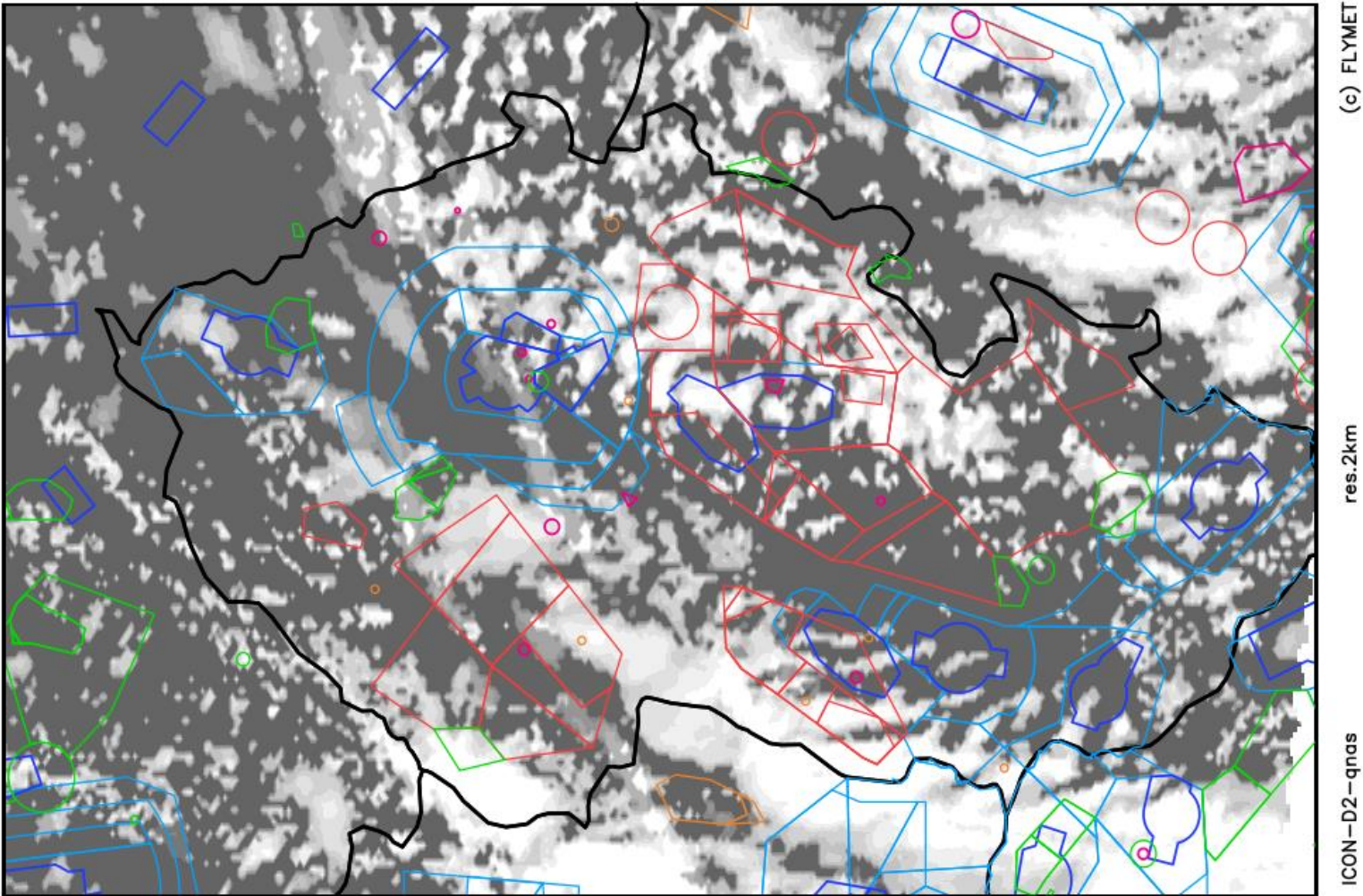
sct

ovc

WEATHER

clouds

monday 05.08. 2024 15:00 utc



skc

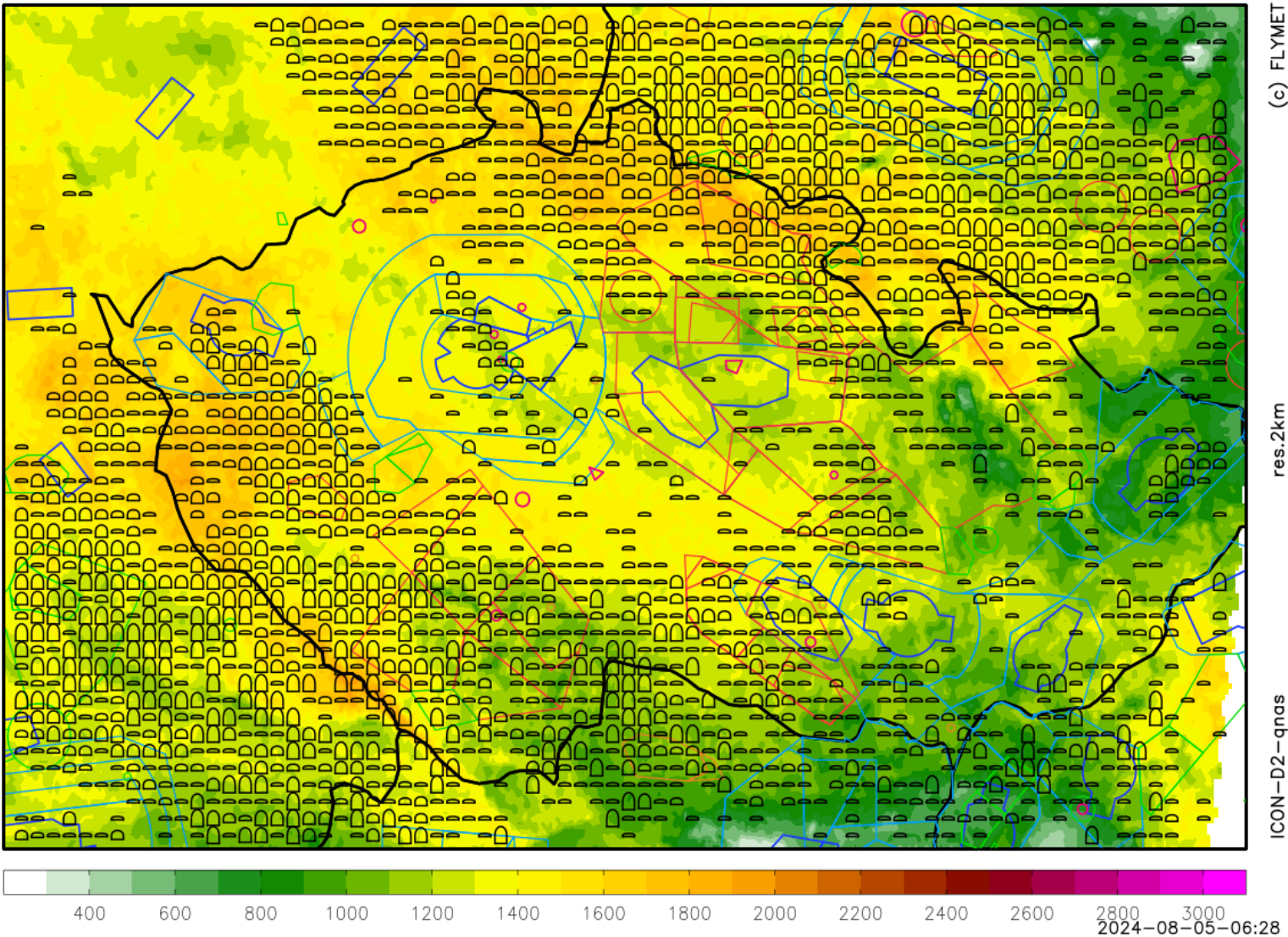
sct

ovc

WEATHER

thermals blue + cumulus

monday 05.08.2024 12:00utc



(c) FLYMET

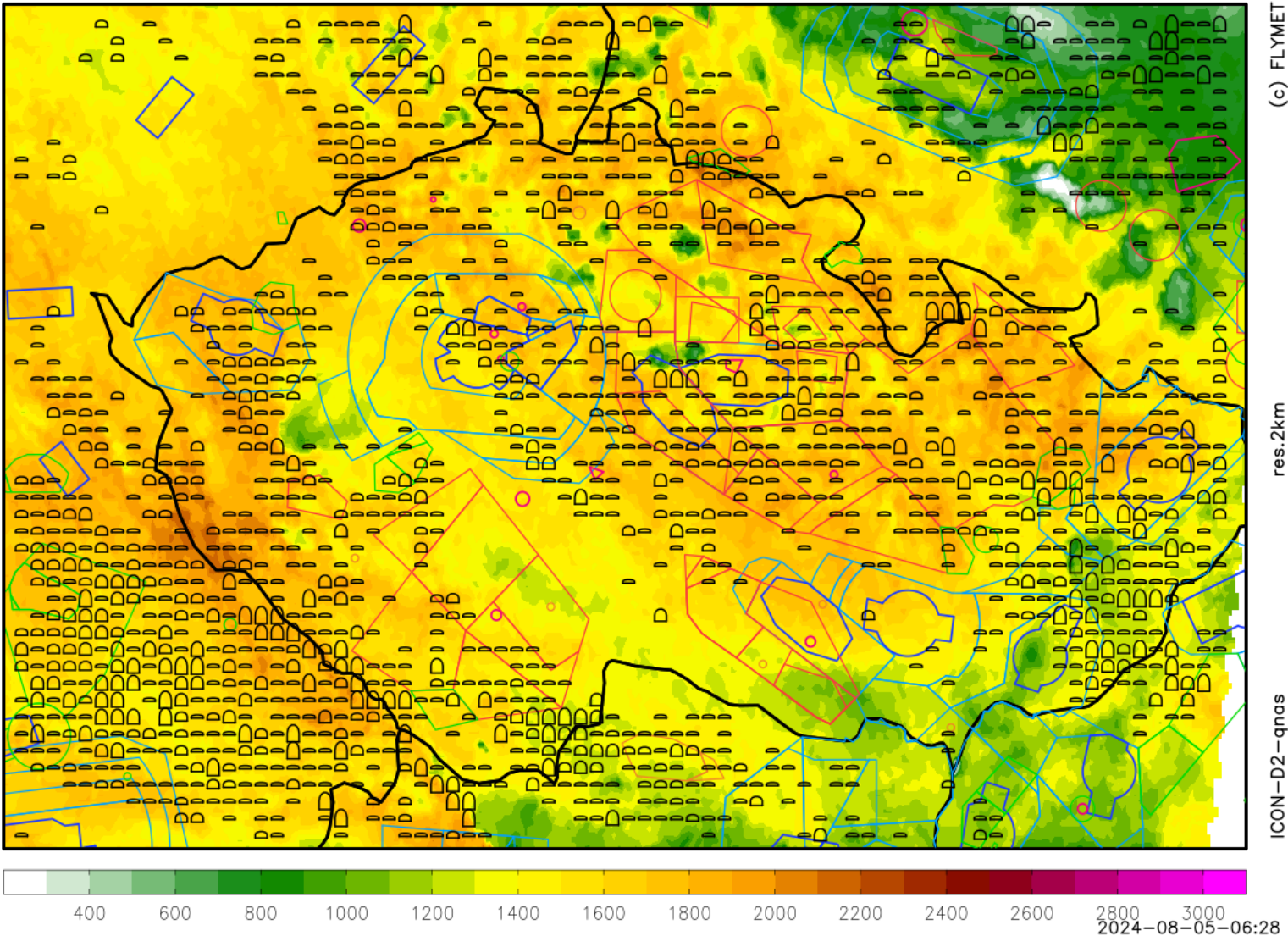
res. 2km

ICON-D2-qnas

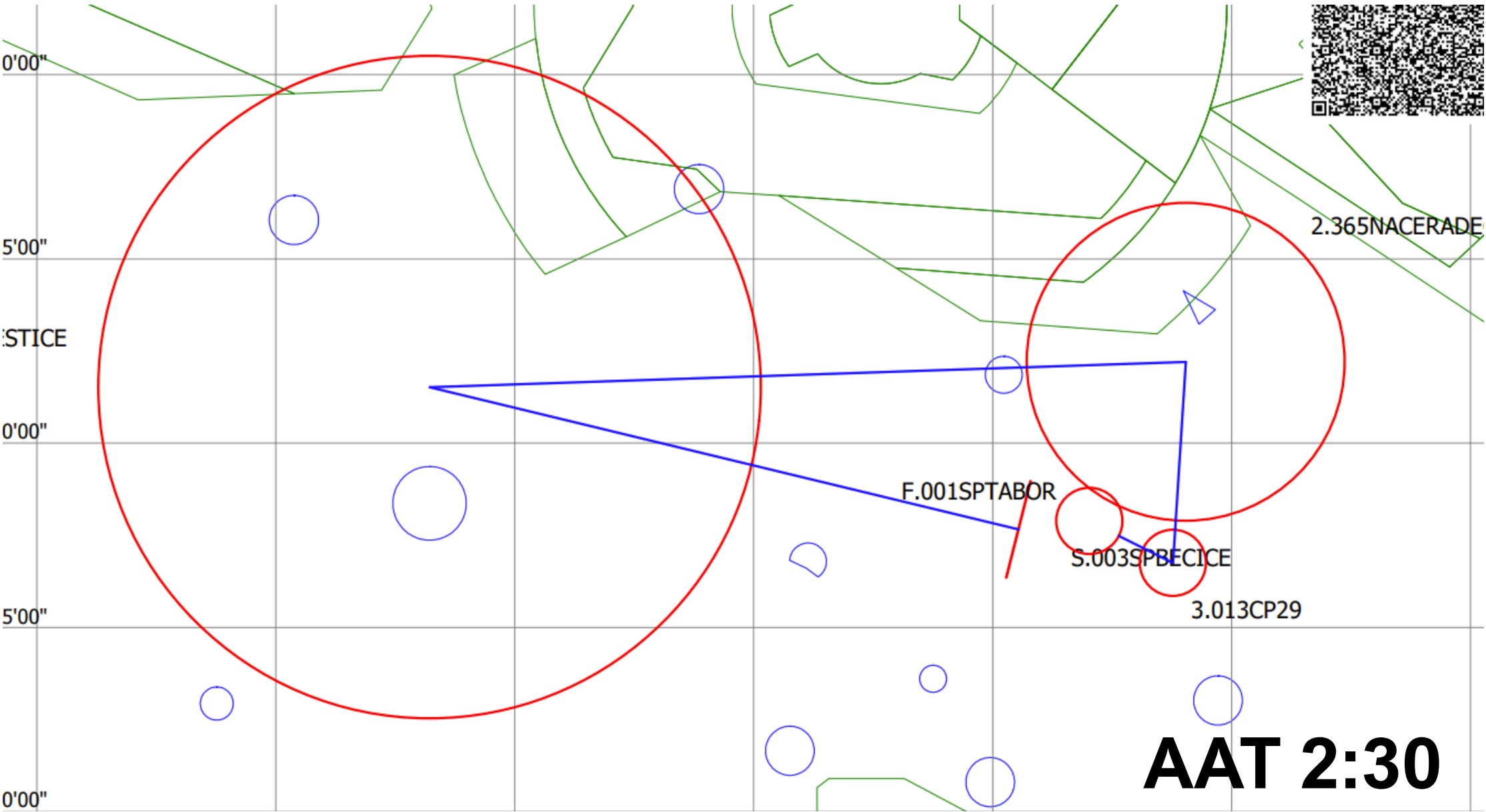
WEATHER

thermals blue + cumulus

monday 05.08.2024 15:00utc

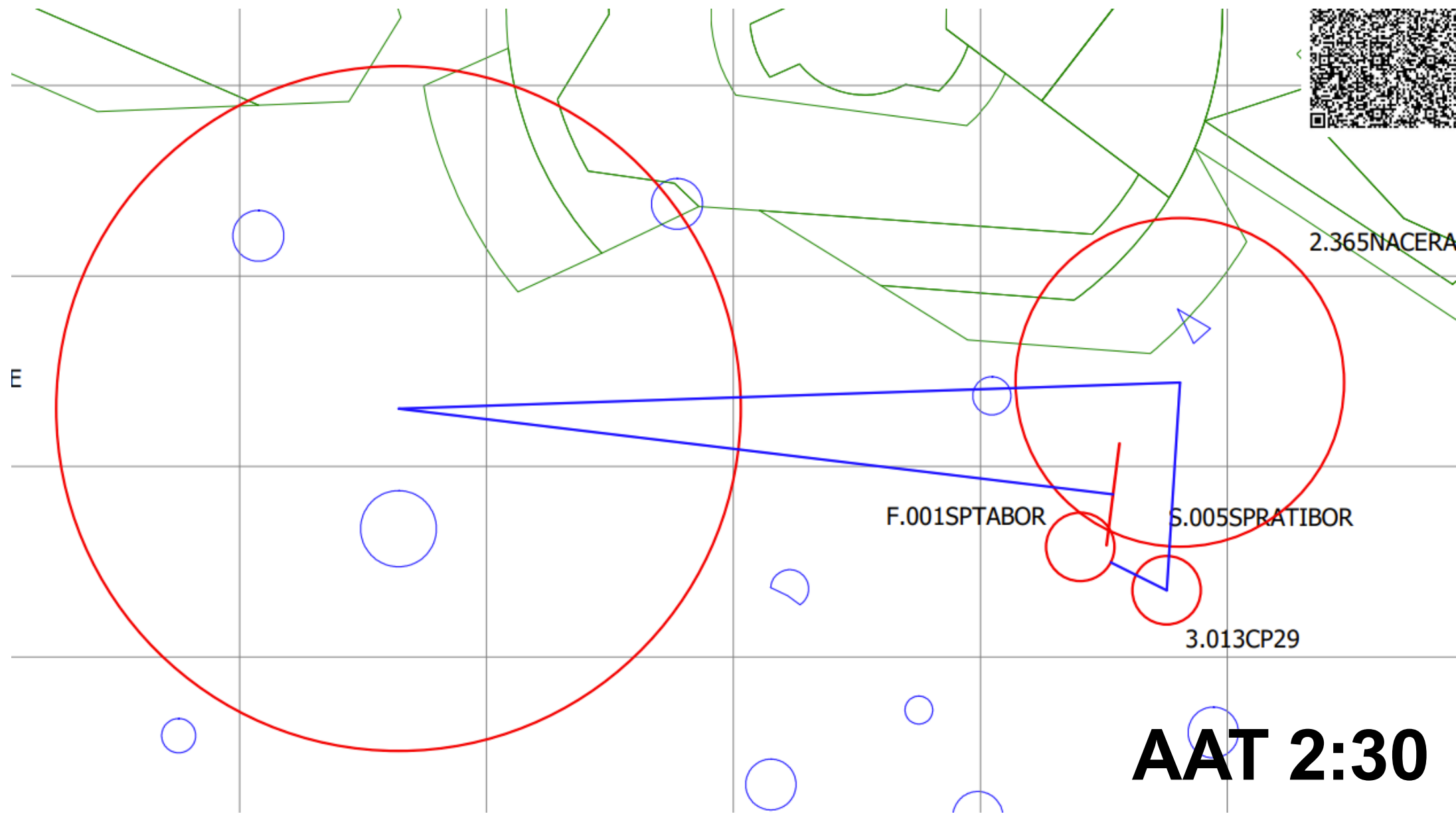


TASK FOR CLUB CLASS

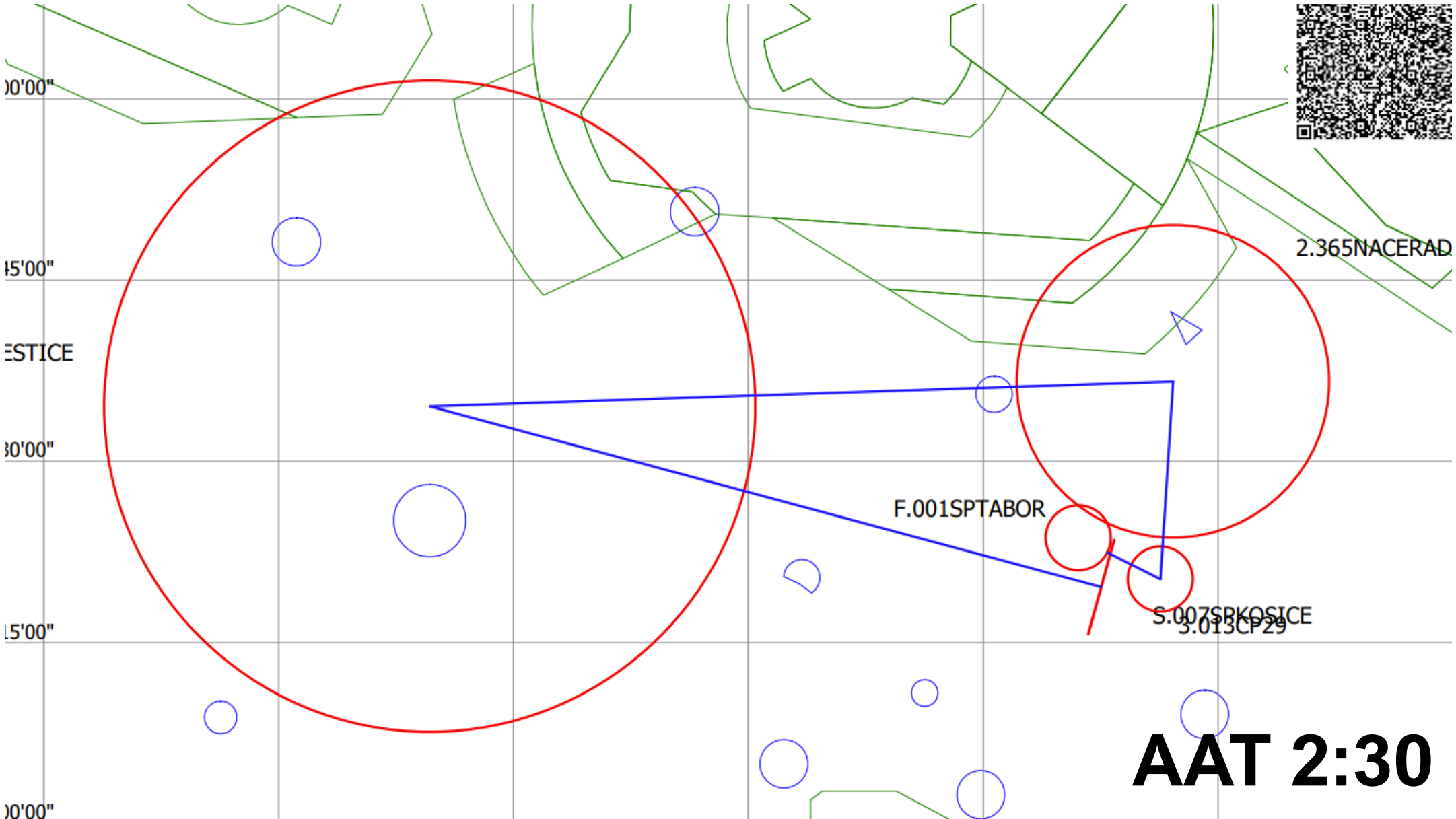


TASK FOR STANDARD CLASS

EGC
2024

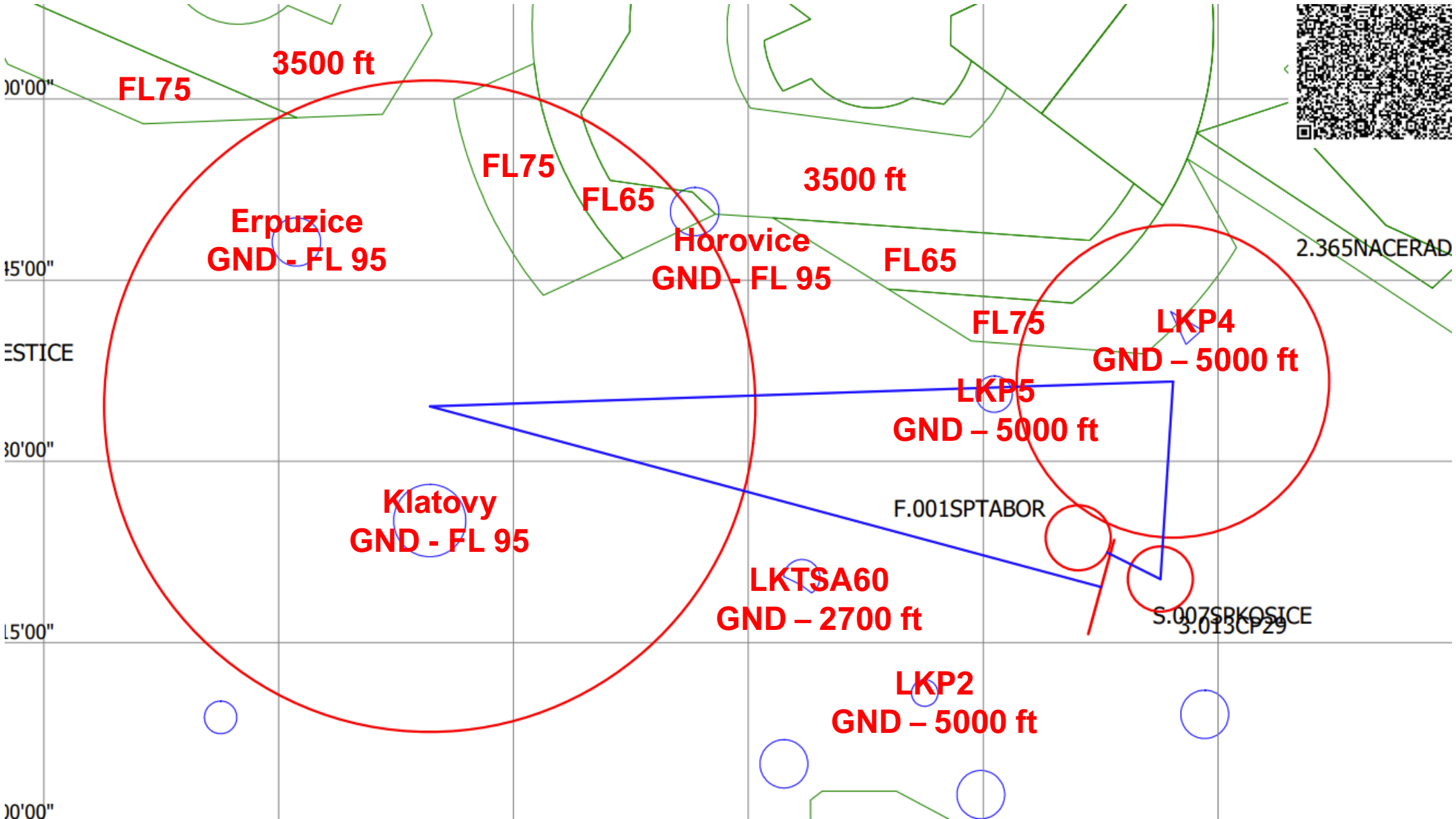


TASK FOR 15M CLASS



AAT 2:30

AIRSPACE



GRID ORDER RWY 29

**ORDER OF CLASSES MAY CHANGE
ROW NUMBERS WILL BE KEPT CONSTANT**

**CLUB CLASS (40)
ROWS 1 - 8**

**STANDARD CLASS (34)
ROWS 9 - 15**

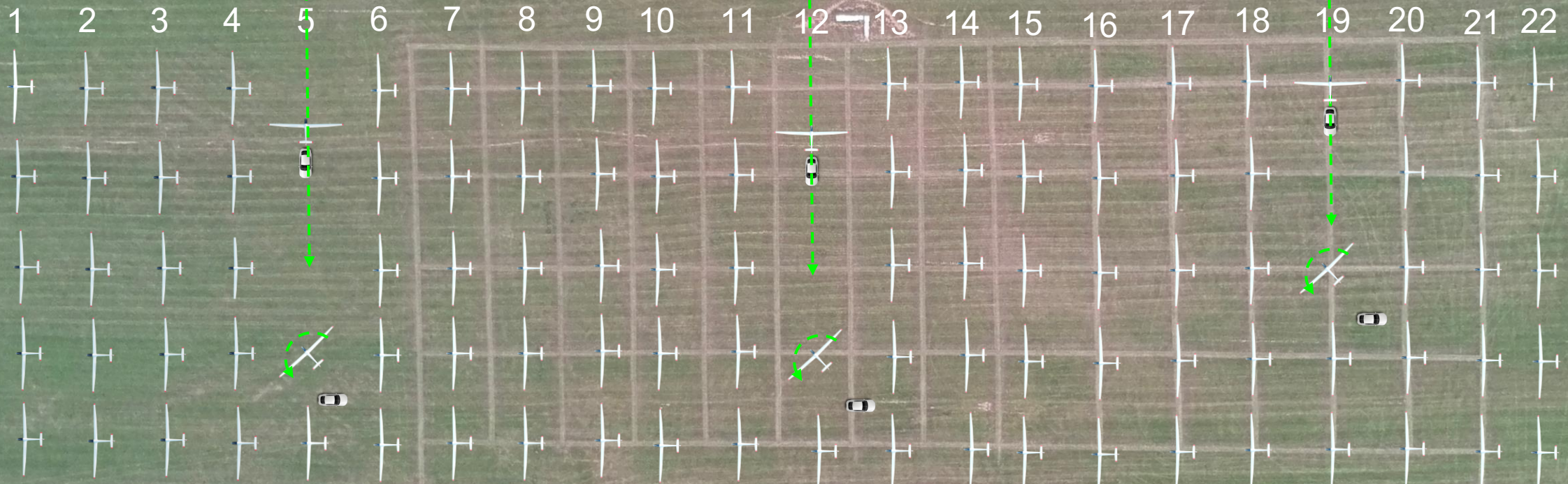
**15M CLASS (29)
ROWS 16 - 21**

**IF A COMPETITOR IS
ASSIGNED ROW 1,
THEY WILL REMAIN IN
ROW 1 FOR THE
ENTIRE
CHAMPIONSHIPS BUT
LOCATION OF THE
ROW WILL CHANGE
EACH DAY**

GRID RWY 29

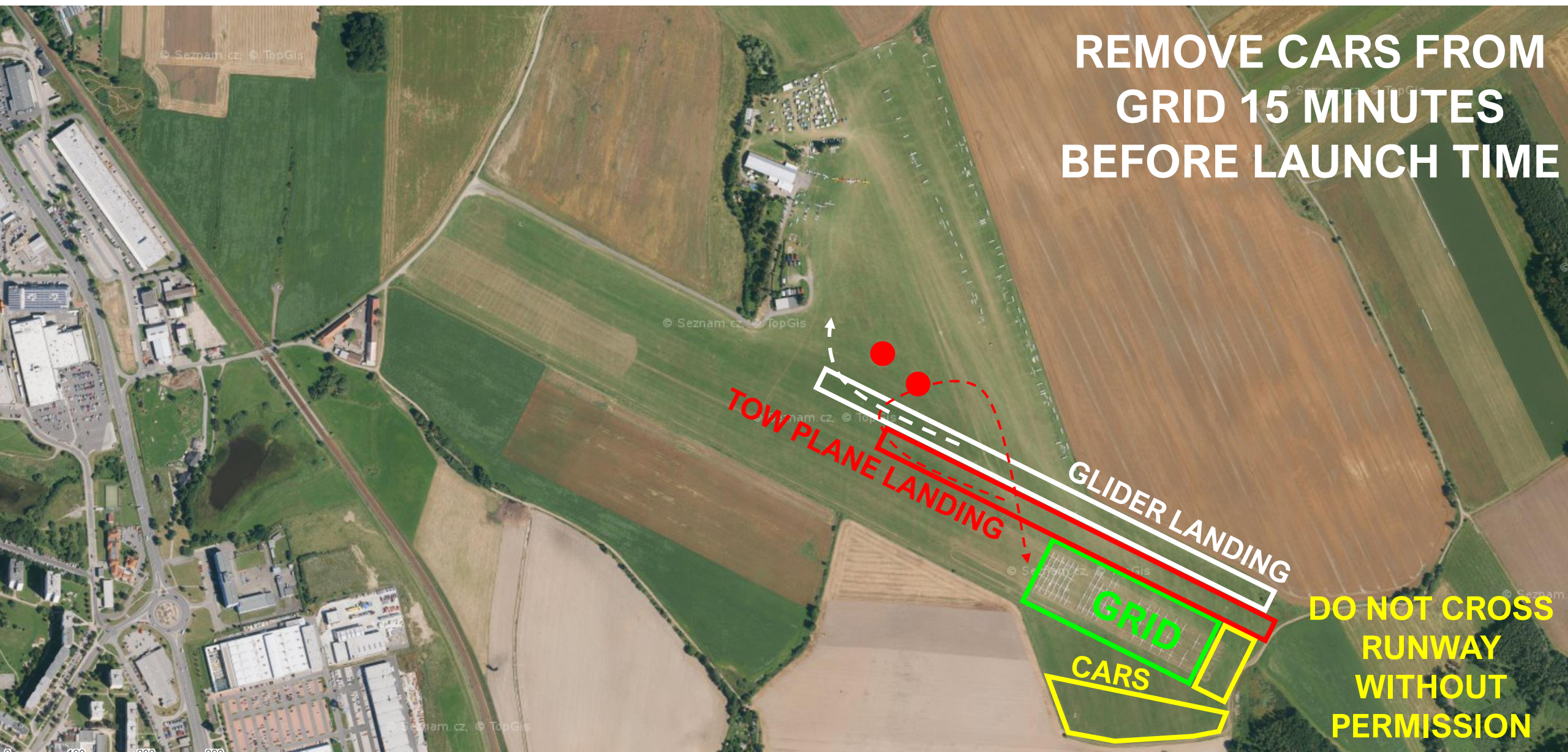


FOLLOW MARKING ON GROUND
COME FROM THE NORTH SIDE
BUILD ROWS FROM SOUTH TO NORTH



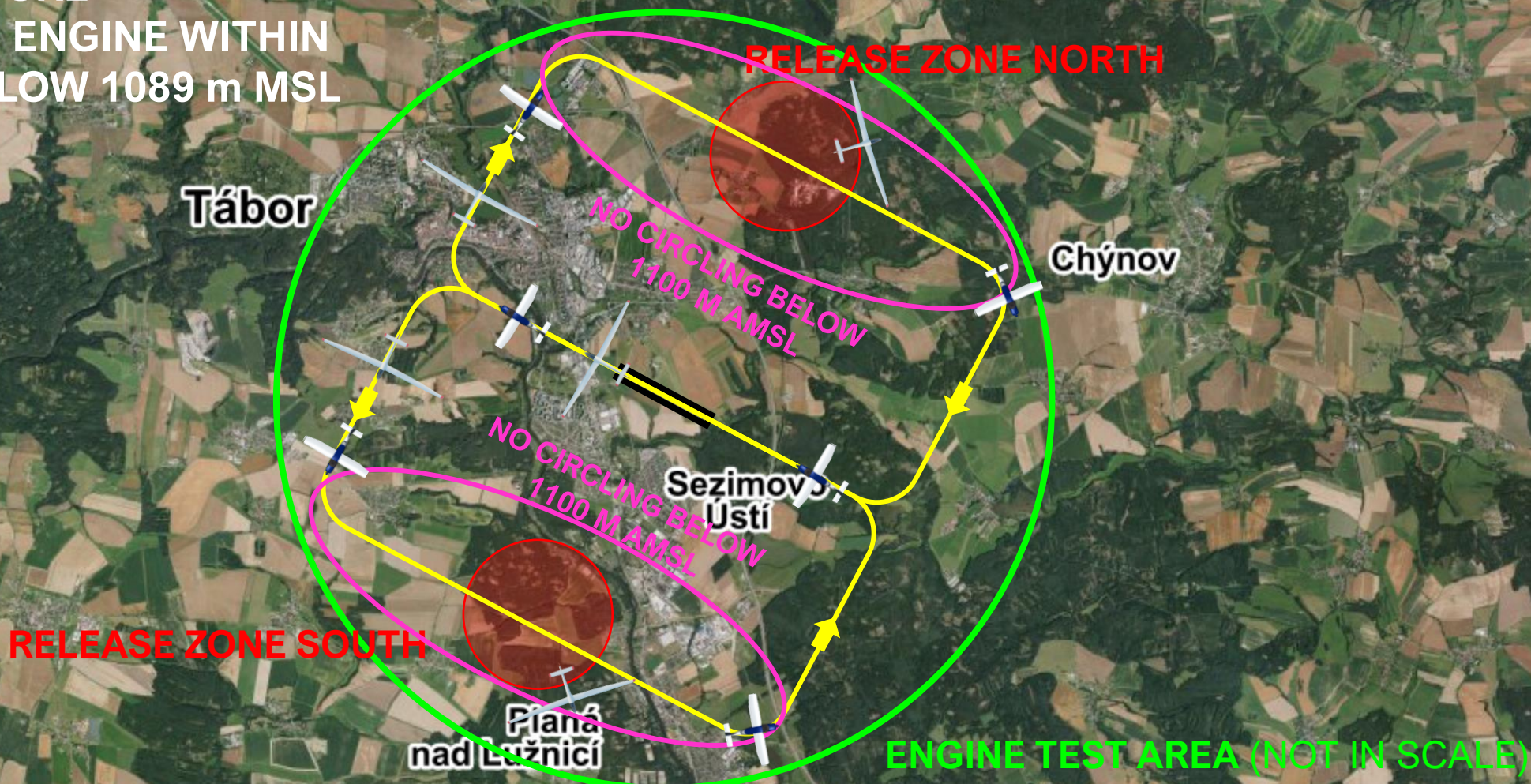
TAKE-OFF RWY 29

REMOVE CARS FROM
GRID 15 MINUTES
BEFORE LAUNCH TIME



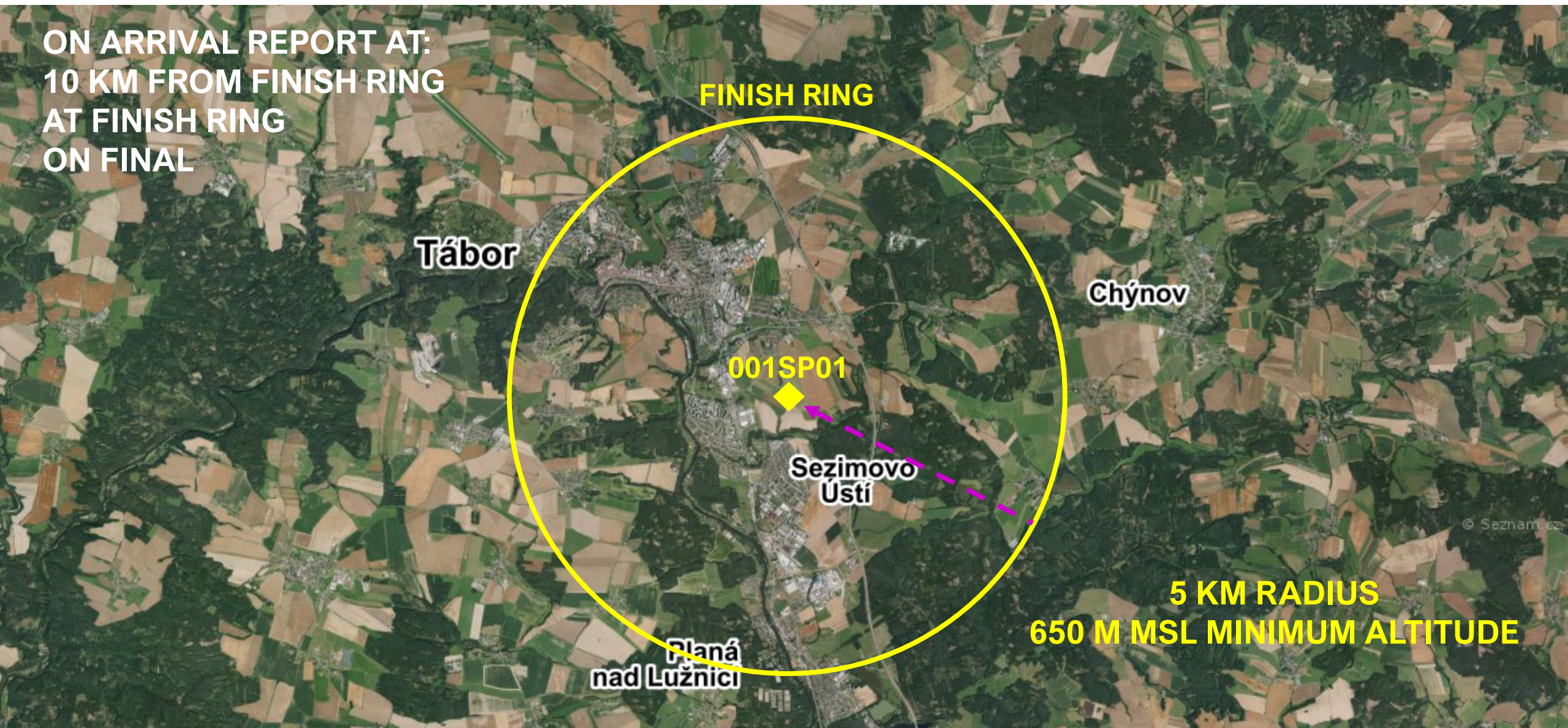
AEROTOWS RWY 29

FOR SELF-LAUNCH FOLLOW
SAME PROCEDURE
TURN OFF THE ENGINE WITHIN
TEST AREA BELOW 1089 m MSL



FINISH RWY 29

ON ARRIVAL REPORT AT:
10 KM FROM FINISH RING
AT FINISH RING
ON FINAL

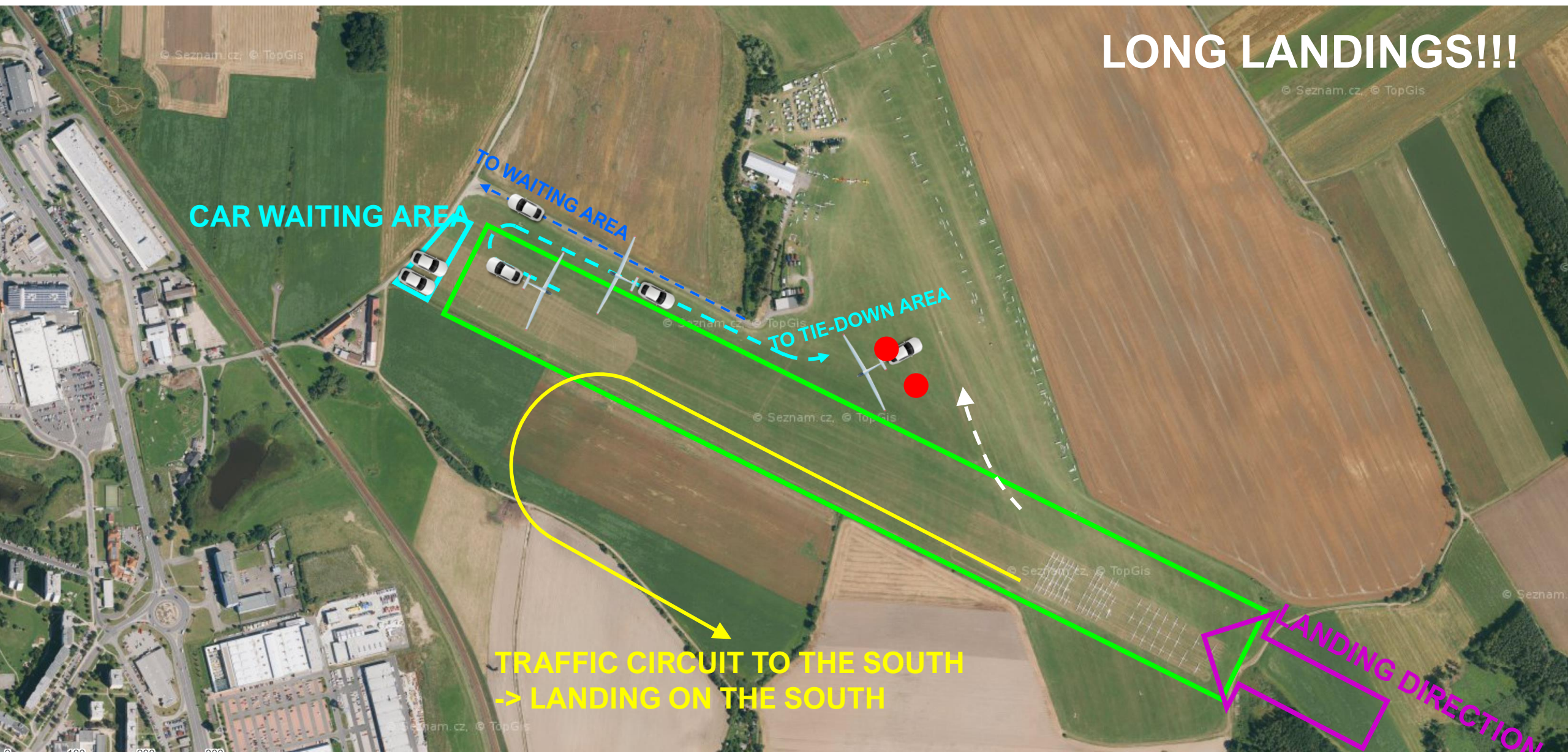


LANDING RWY 29

EGC
2024



LONG LANDINGS!!!



CAR WAITING AREA

TO WAITING AREA

TO TIE-DOWN AREA

TRAFFIC CIRCUIT TO THE SOUTH
-> LANDING ON THE SOUTH

LANDING DIRECTION

PRE-START ALTITUDE LIMIT

- PRE-START ALTITUDE LIMIT
1500m MSL

PEV START PROCEDURE

— PEV WAIT TIME

8 MINUTES

— PEV START WINDOW

5 MINUTES

— MAXIMUM NUMBER OF STARTS: 3

START LINE OPENING



- START LINE WILL OPEN **20** MINUTES AFTER
LAST LAUNCH IN CLASS

IGC FILE DELIVERY

- SEND ALL FILES TO IGC@POHODA.COM
- **30 MINUTES FOR FILE DELIVERY**
- INCLUDE CN IN EMAIL SUBJECT
- ENSURE CORRECT FILE HEADER
- 1 SECOND FIX RATE

SAFETY

- LOOK OUT, LOOK OUT, LOOK OUT
- STAY HYDRATED
- FLY SAFE

INFORMATION FOR TODAY



- RUNWAY IN USE TODAY: **29**
- FIRST LAUNCH: **12:00**

EGC
2024



Jihočeský kraj



Air Navigation Services
of the Czech Republic

eclipse.

SKUPINA
GW JIHOTRANS

 **ABS JETS**

NOBIS GROUP
WWW.AGROPANEL.CZ

FOPO II.