

**EGC**  
**2024**



**3 August - 17 August 2024 ,Tábor, Czech Republic**

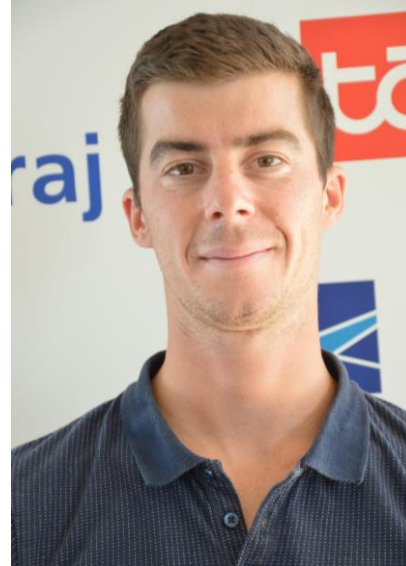
# **DAILY BRIEFING**

**COMPETITION DAY 3 – 07/08/2024**

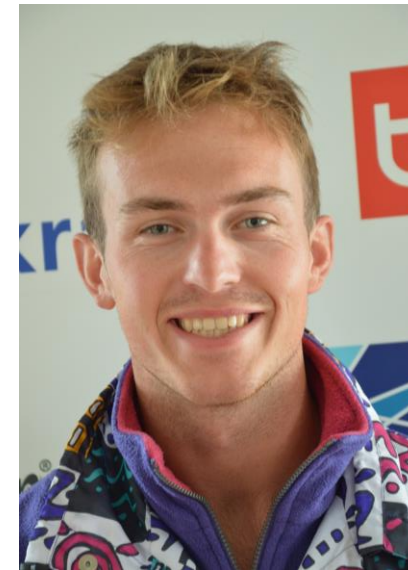
# CLUB CLASS DAILY WINNERS



**Second Place:**  
Tomáš Suchánek [CZE]



**First Place:**  
Hugo Corbille [FRA]



**Third Place:**  
Toby Freeland [GBR]

# STANDARD CLASS DAILY WINNERS



**Second Place:**  
Norbert Scarlat [ROM]



**First Place:**  
Jeroen Jennen [BEL]



**Third Place:**  
Robin Smit [NED]

# 15M CLASS DAILY WINNERS



**Second Place:**  
Pawel Wojciechowski [POL]



**First Place:**  
Lukasz Grabowski [POL]



**Third Place:**  
Riccardo Brigliadori [ITA]

# REMARKS TO YESTERDAY



- CREW MEMBERS, MOVE YOUR THINGS  
AWAY FASTER AFTER LAUNCH
- DO NOT LEAVE STUFF BEHIND GLIDER IF  
YOU ARE ONE OF THE LAST IN THE ROW

# REMARKS TO YESTERDAY

- STRAIGHT ROLL-OUTS -> NO TURNING  
AFTER LANDING
- ONLY LOW ENERGY TURNS TO THE NORTH  
AND YOU MUST LAND AT THE NORTHERN  
EDGE

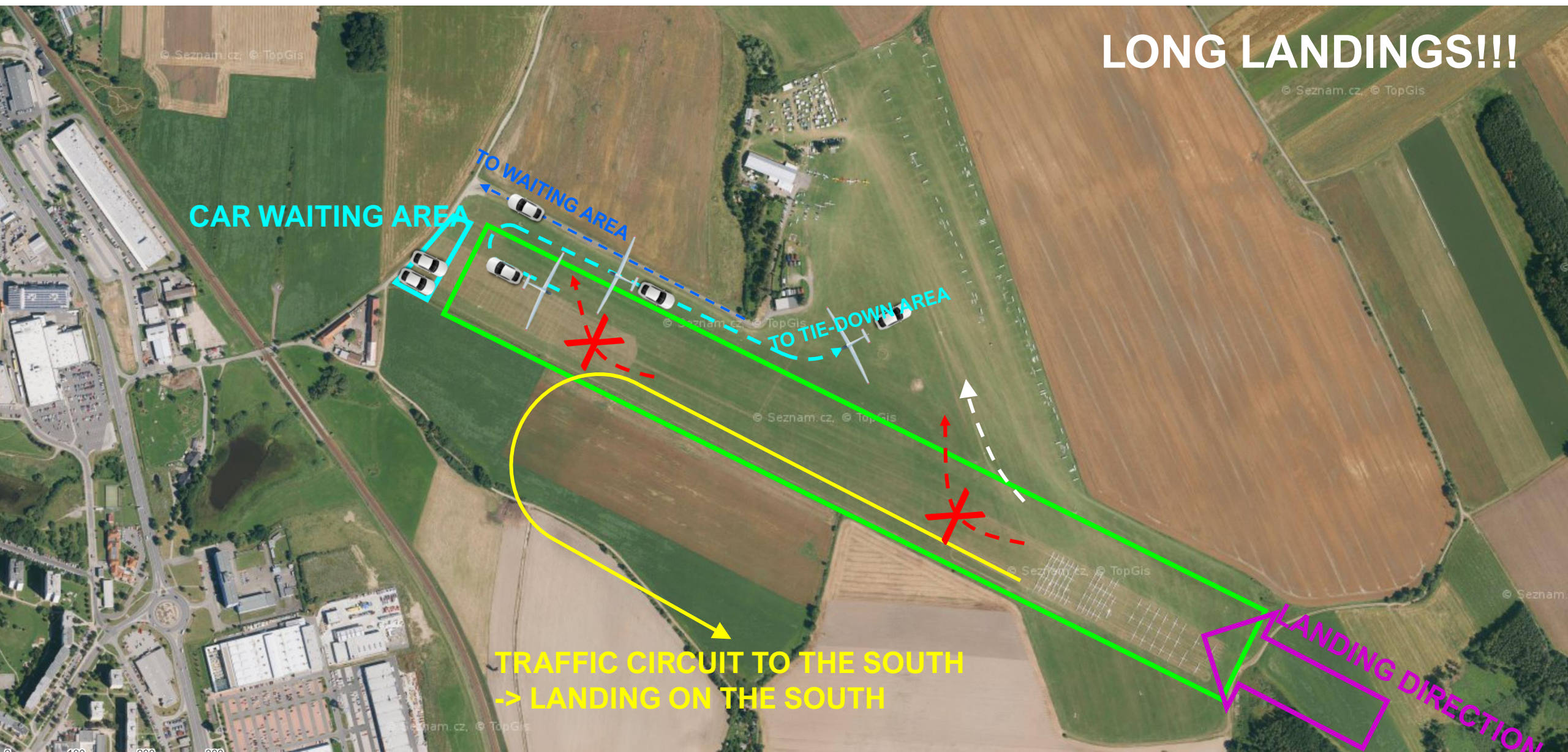


# LANDING RWY 29

EGC  
2024



LONG LANDINGS!!!



# REMARKS TO YESTERDAY

- DO NOT TOW GLIDERS ALONG THE RWY  
EDGE DURING LANDINGS
- CREW MEMBERS NEED TO BE PREPARED AT  
THE END OF THE RWY BEFORE GLIDER  
LANDS AND BE FASTER

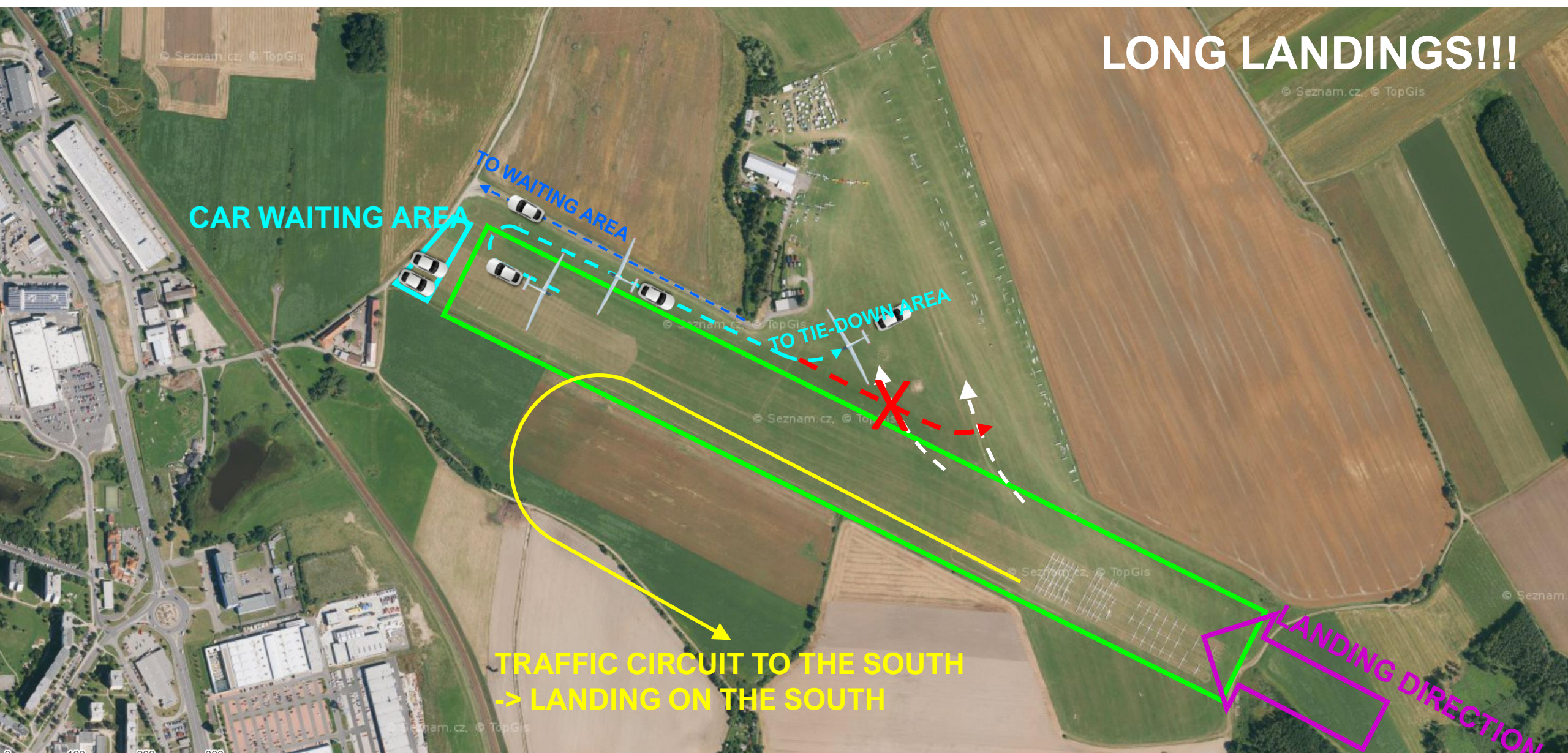


# LANDING RWY 29

EGC  
2024



LONG LANDINGS!!!





# REMARK

## 11.2.1.3 Event start procedure

When event start procedure (PEV Start) is in use, pilot must record an event before crossing the start line or exiting start zone. After pressing the event button, a wait time period starts. When this period finishes, start interval will open in which a penalty-free start may be made. These two parameters can be set in task options dialog. See also chapter 7.7.2.4.

FROM  
LX9000  
MANUAL



Press ARM or EVENT button to trigger event start procedure. Orange coloured timeout will be displayed in top row on final glide symbol counting down wait time period. Once count down is finished a message "Start window is open." Will be shown and start interval countdown in default colour will start count down in top row of final glide symbol.

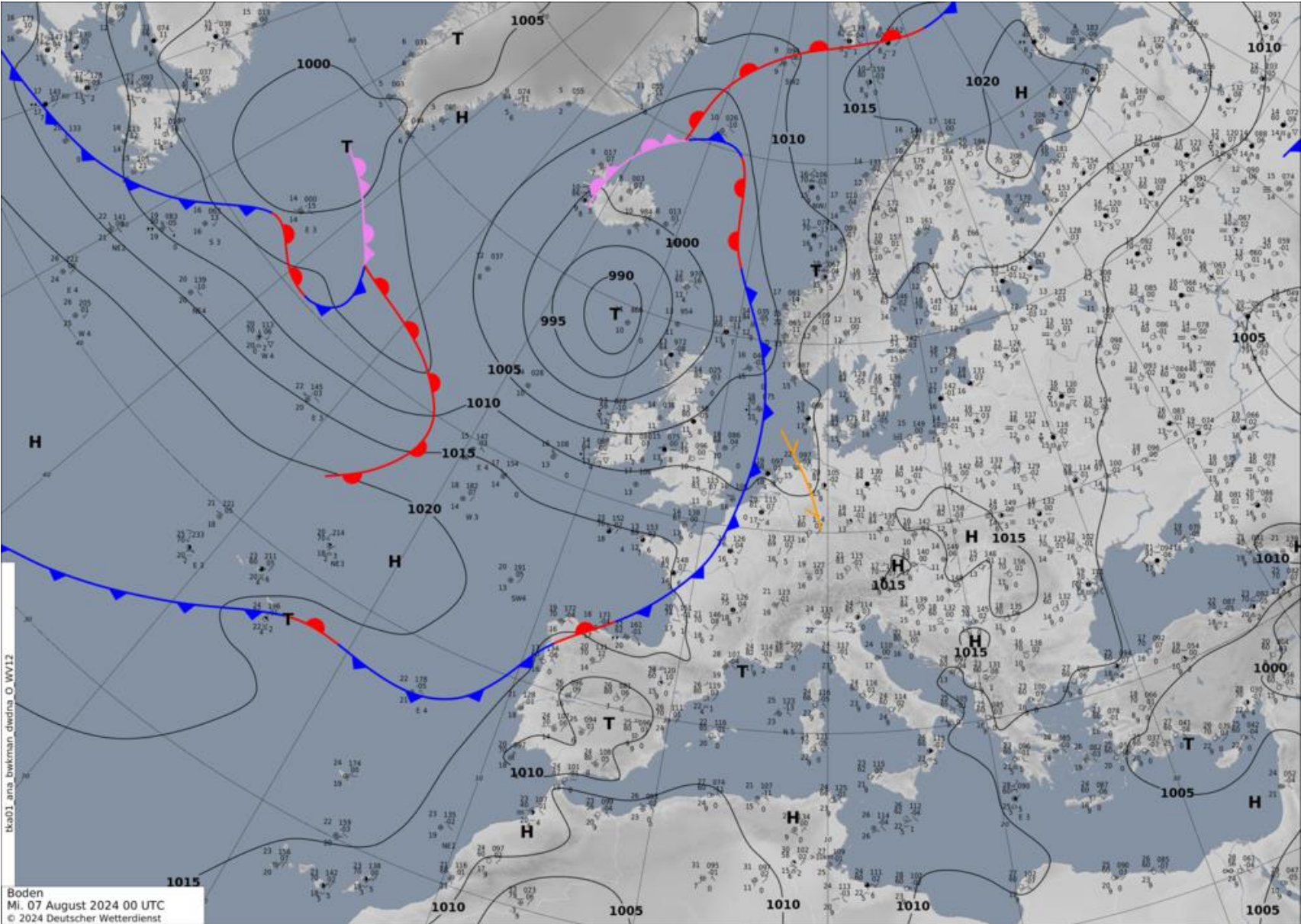
# WEATHER



WE ARE STILL IN  
THE SAME  
POSITION ...

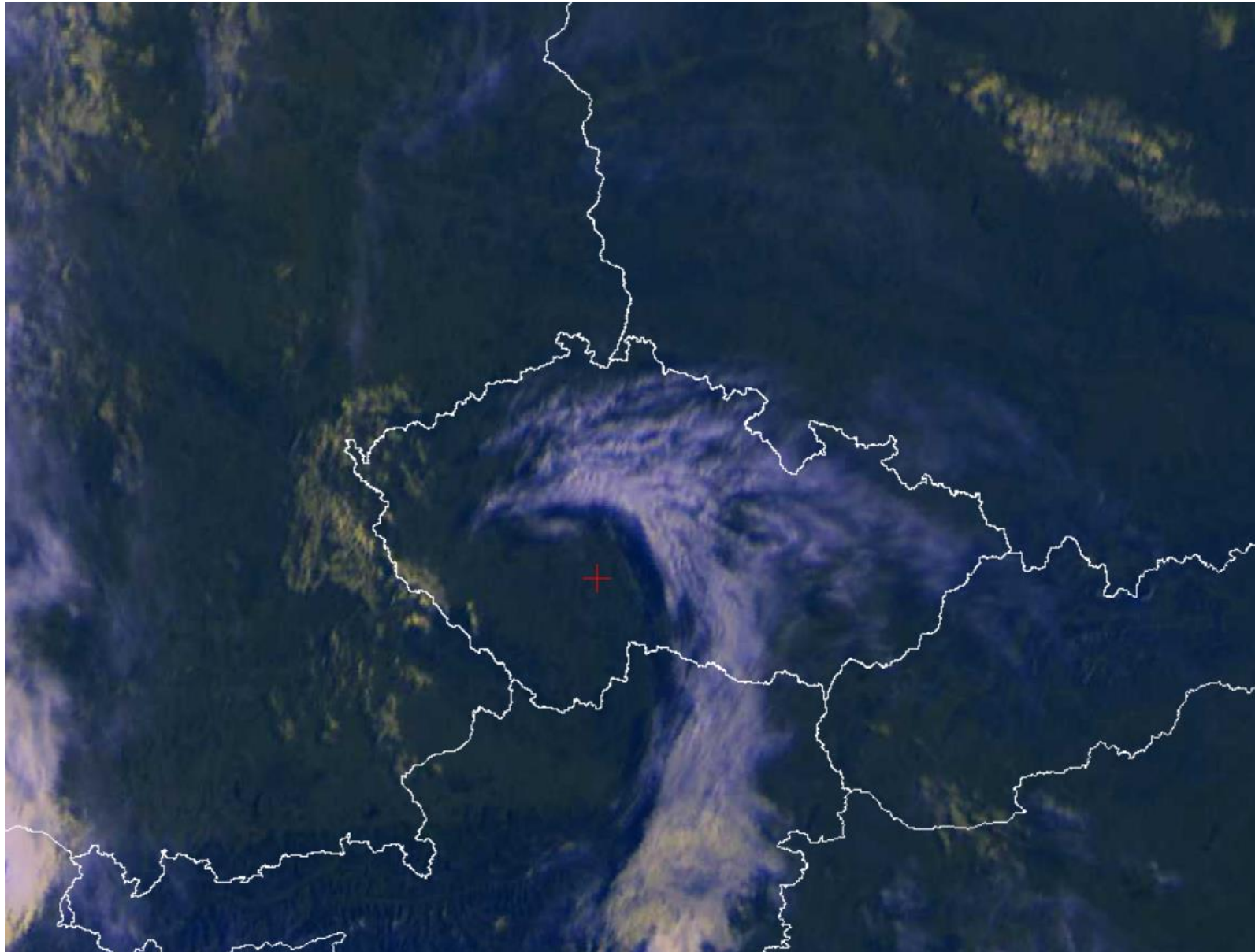


# WEATHER

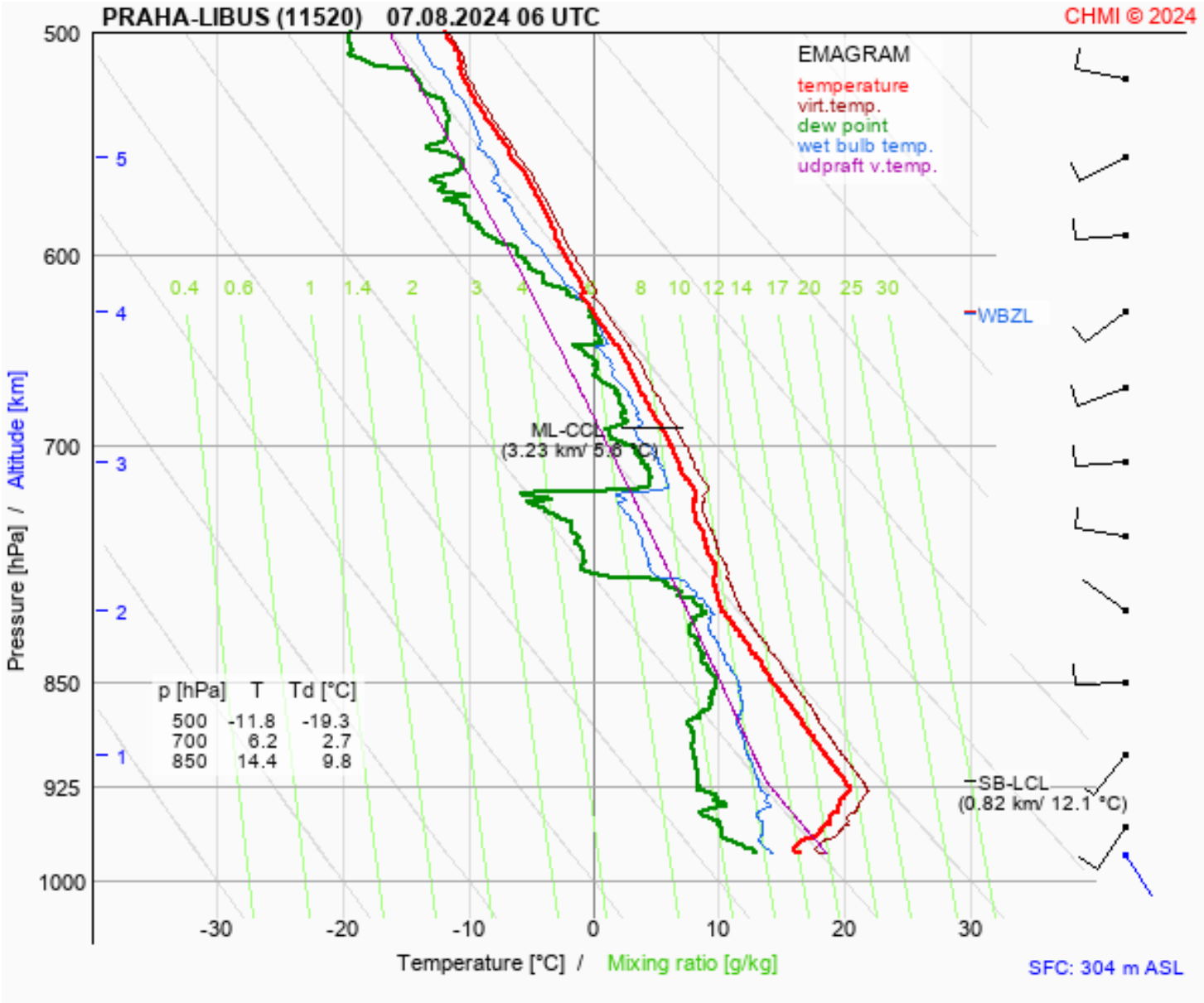




# WEATHER



# WEATHER





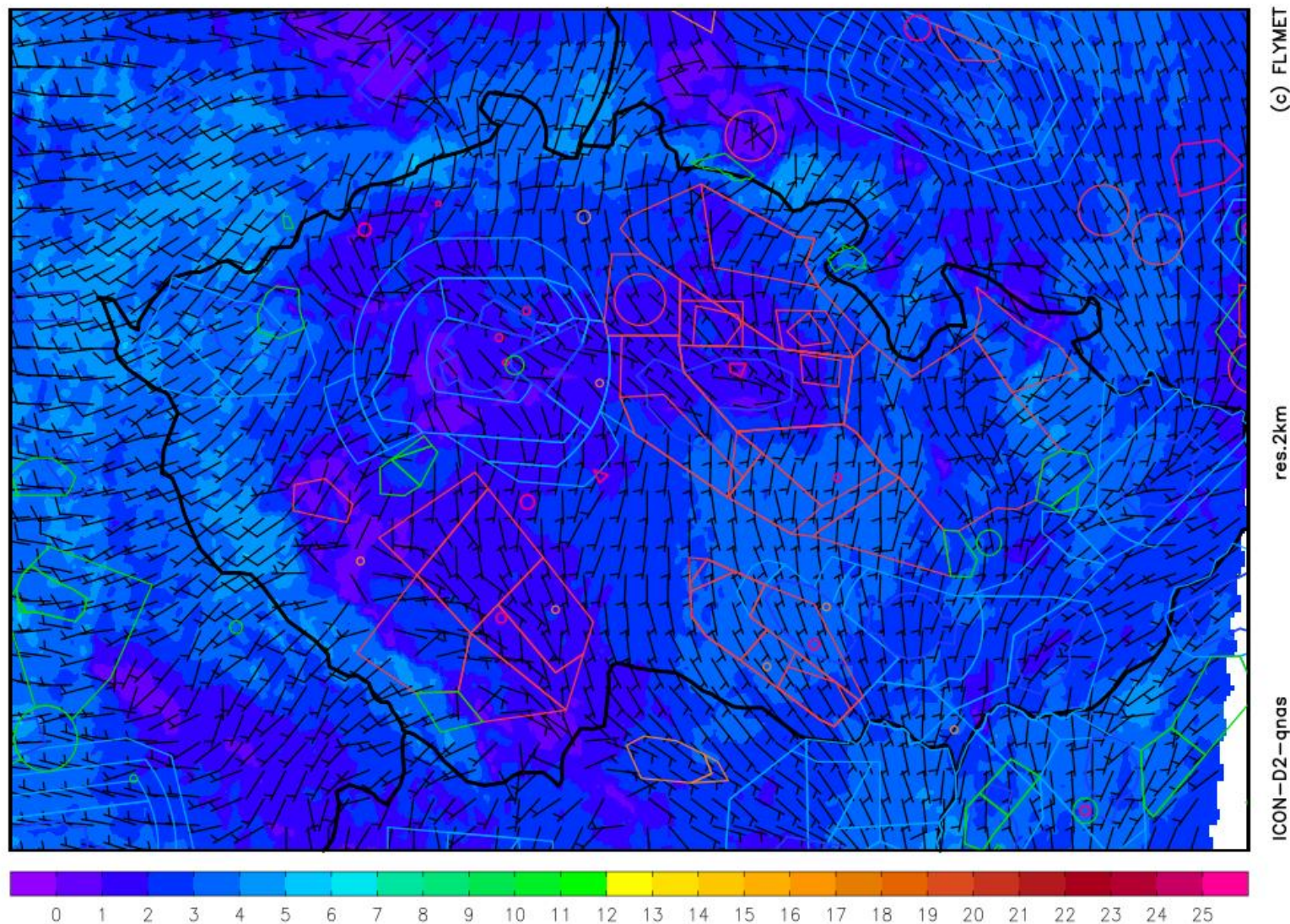
# WEATHER

EGC  
2024



wind at 10m [m/s]

wednesday 07.08. 2024 11:00 utc





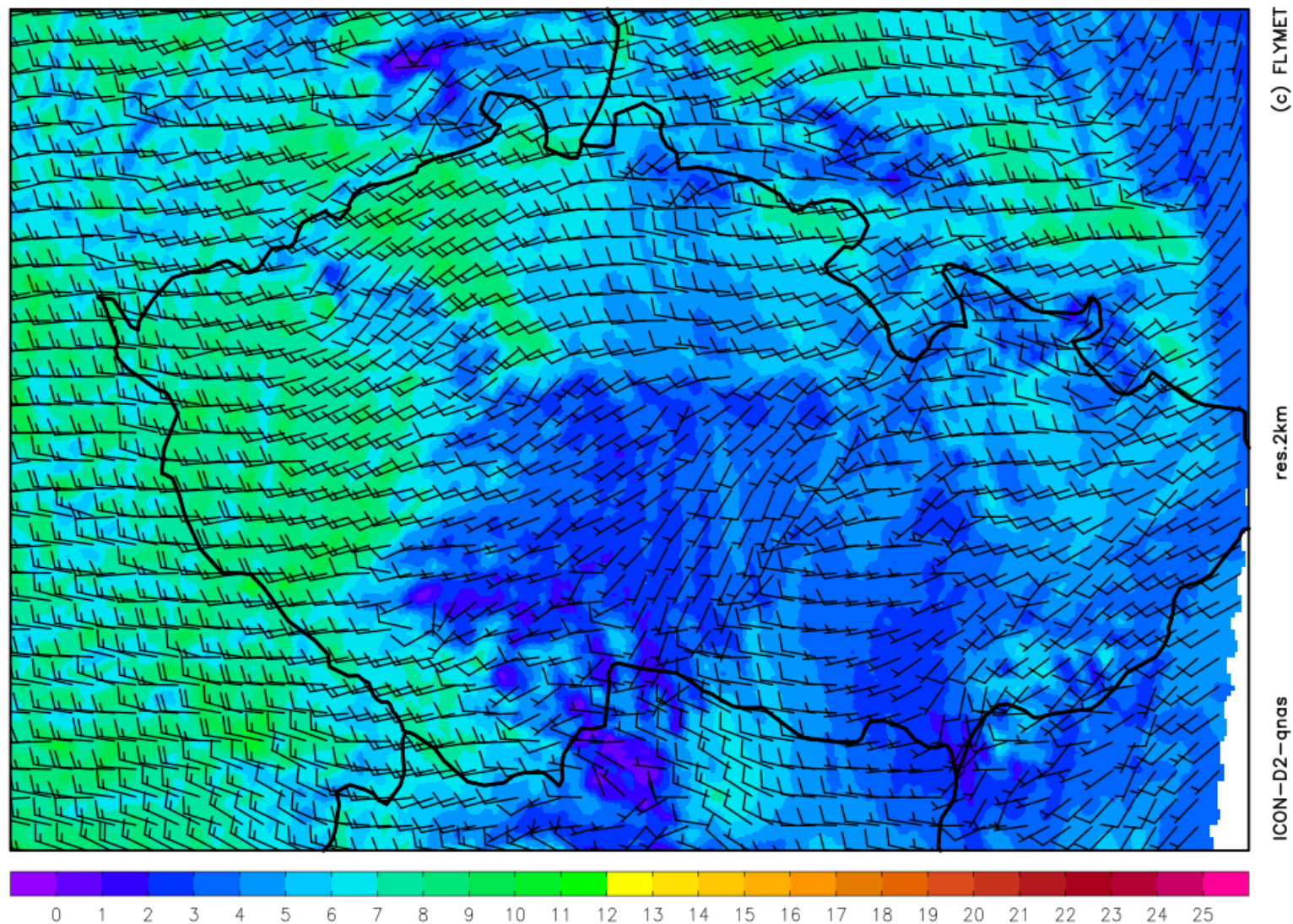
# WEATHER

EGC  
2024



wind 1500 m [m/s]

wednesday 07.08. 2024 13:00 utc

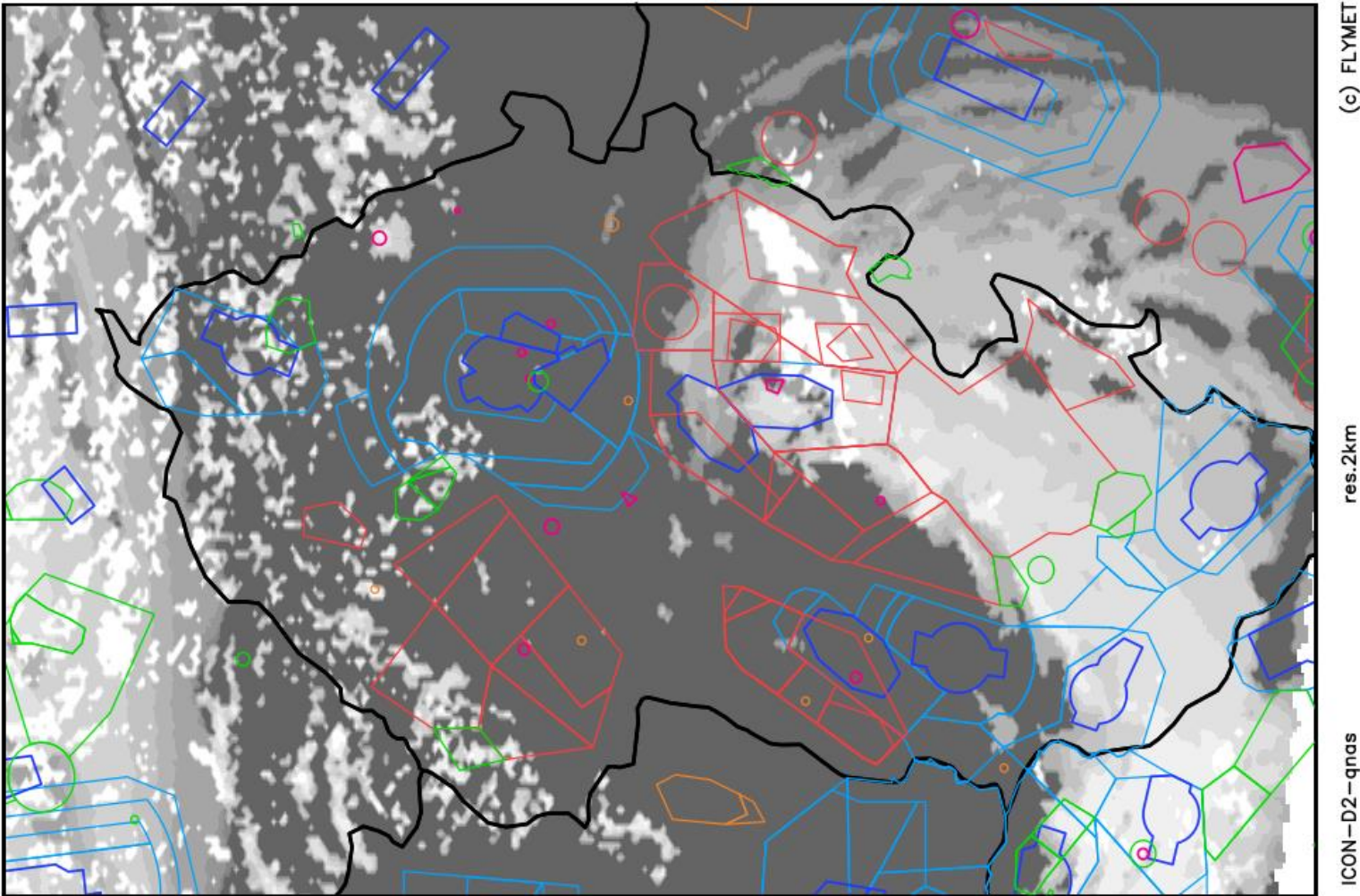




# WEATHER

clouds

wednesday 07.08. 2024 11:00 utc



skc

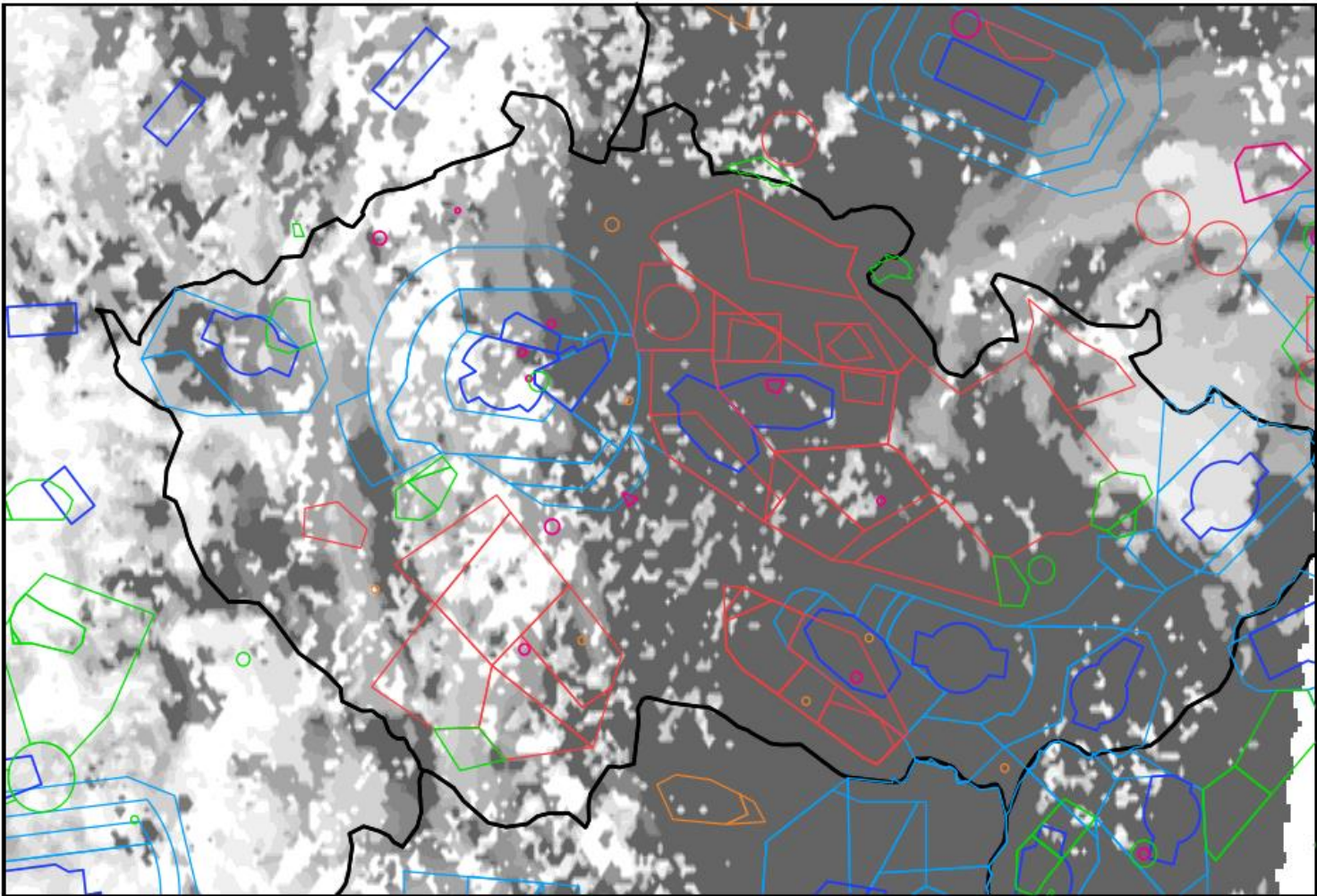
sct

ovc

# WEATHER

clouds

wednesday 07.08. 2024 14:00 utc



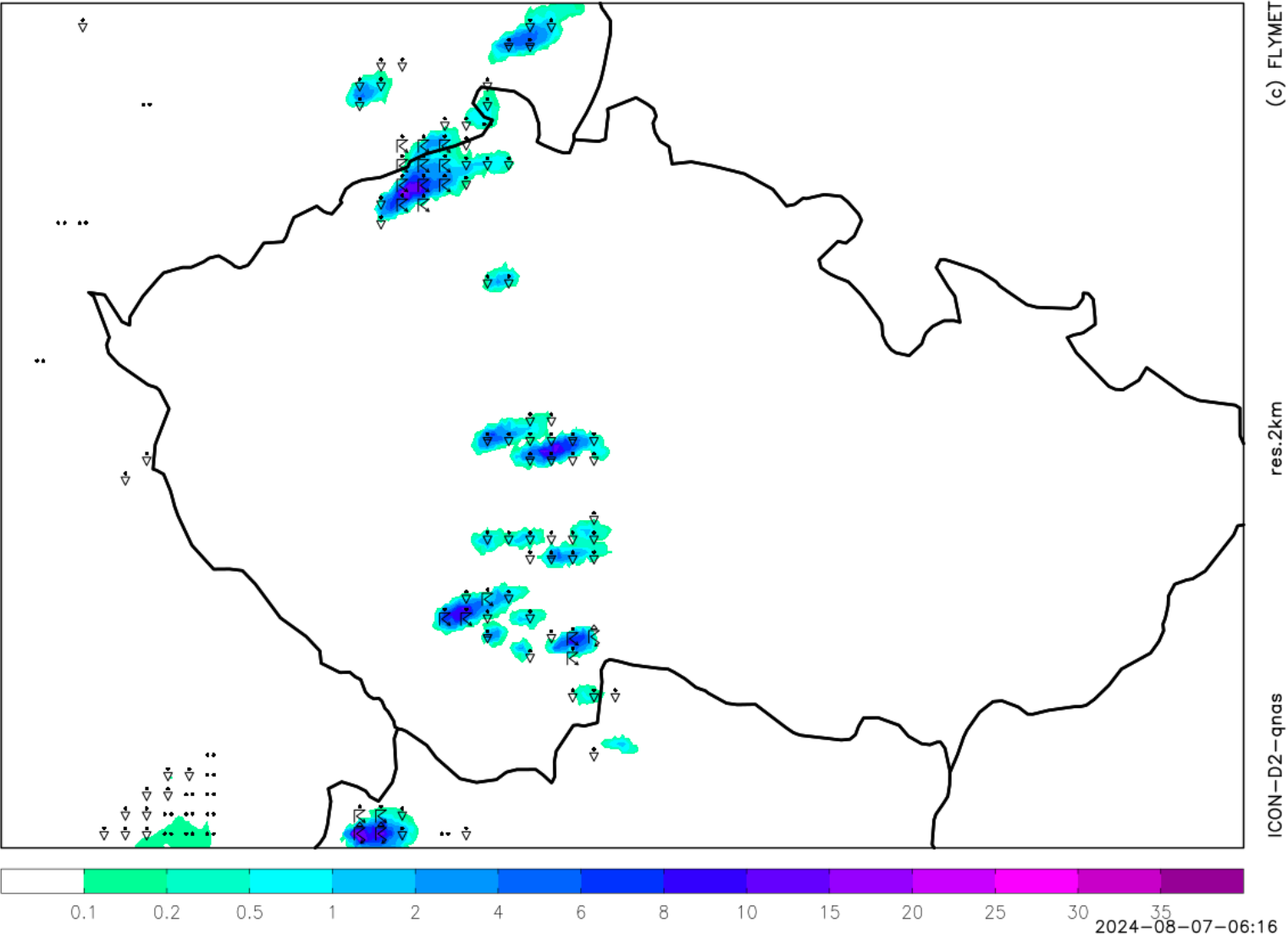
skc

sct

ovc

# WEATHER

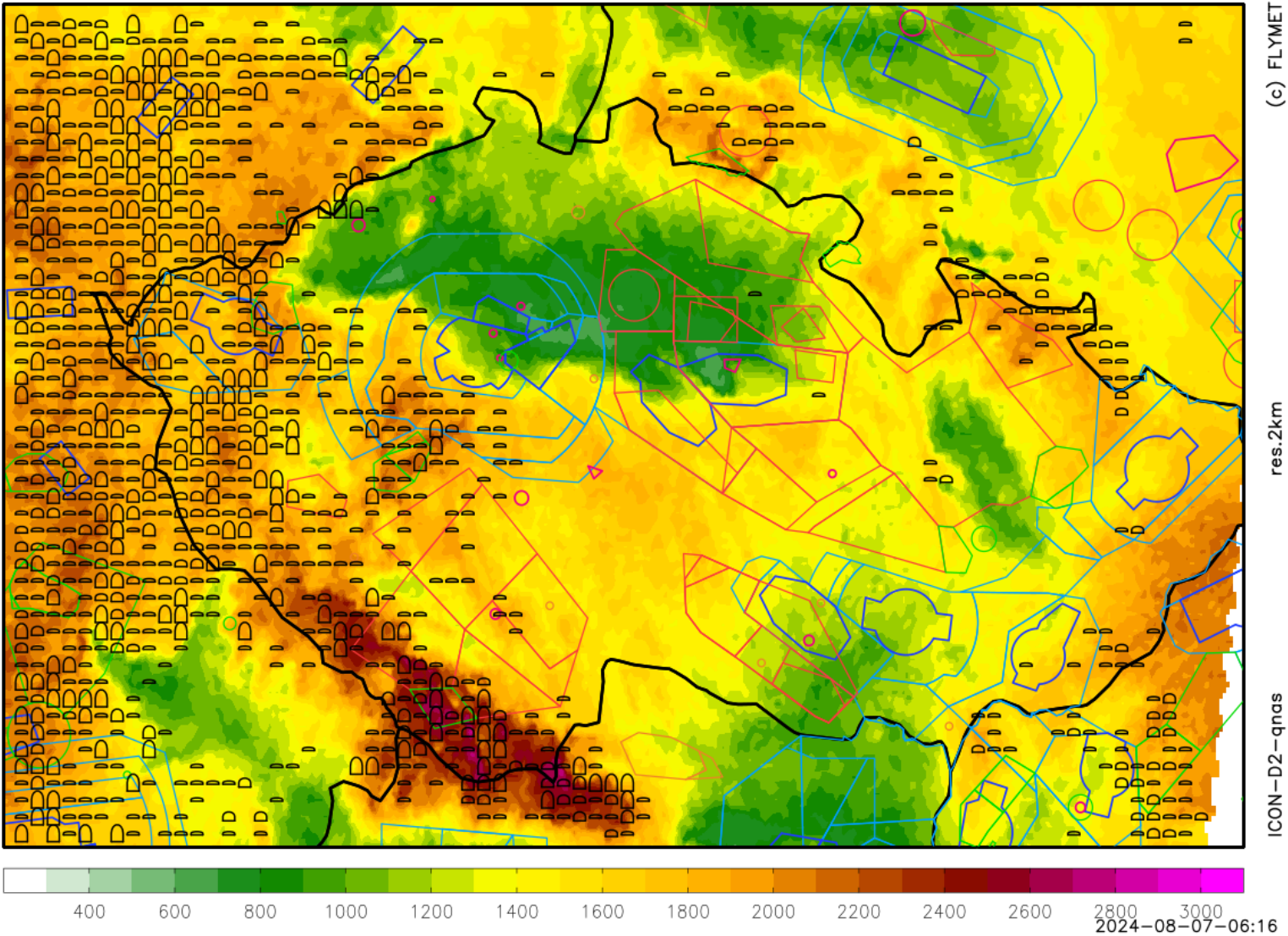
weather + precipitation      wednesday 07.08.2024 16:00utc





# WEATHER

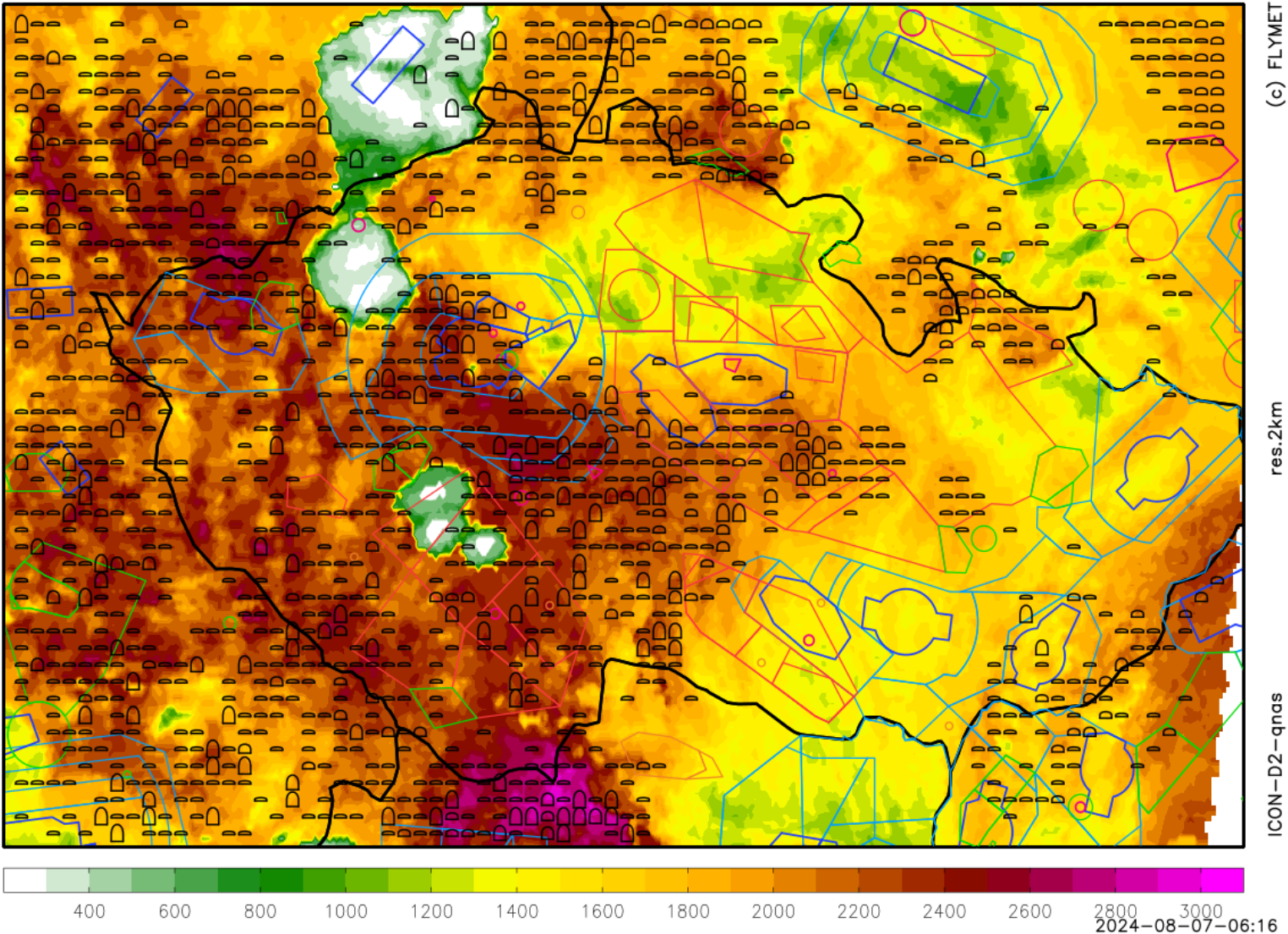
thermals blue + cumulus      wednesday 07.08.2024 11:00utc



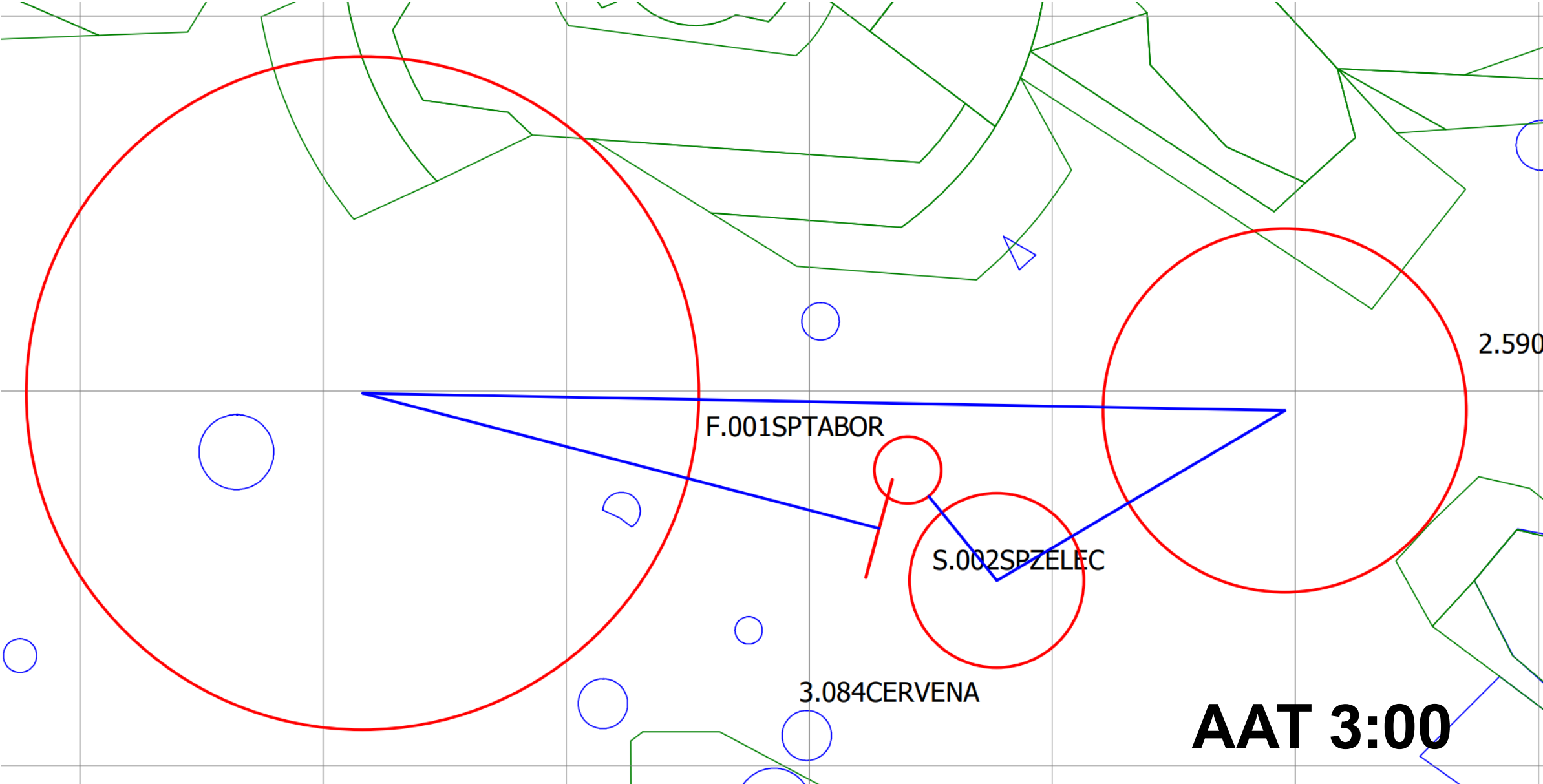


# WEATHER

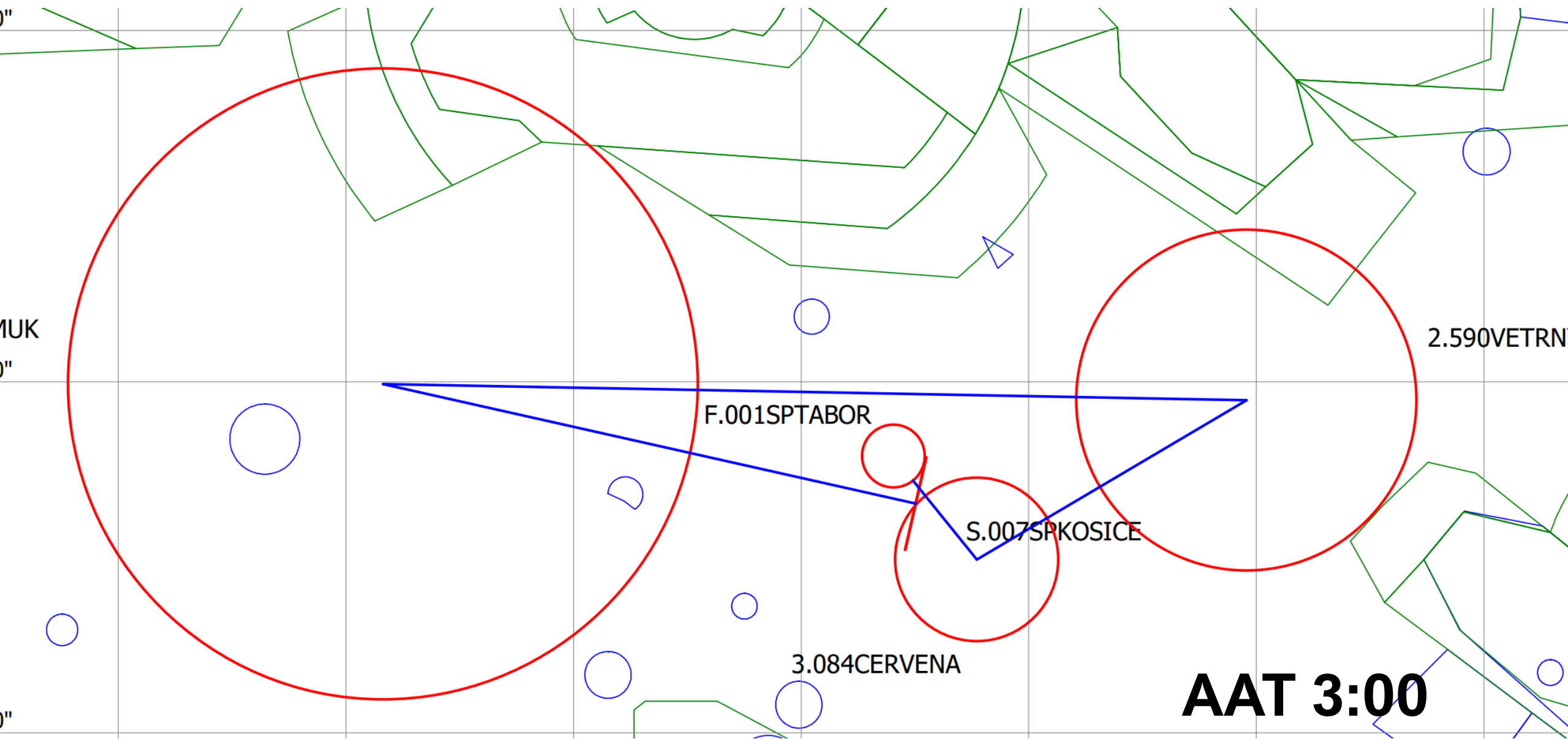
thermals blue + cumulus      wednesday 07.08.2024 14:00utc



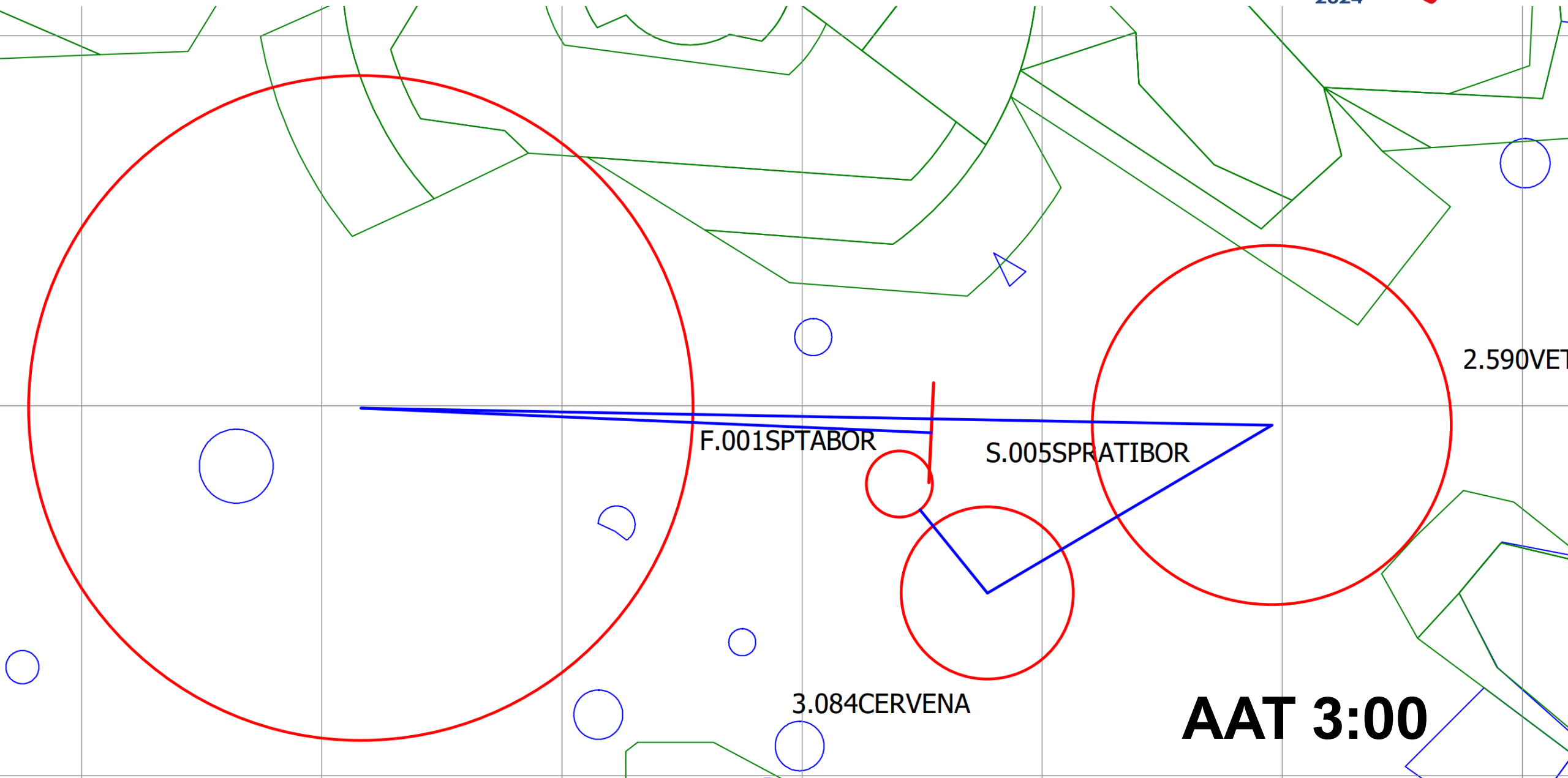
# TASK FOR CLUB CLASS



# TASK FOR STANDARD CLASS



# TASK FOR 15M CLASS



F.001SPTABOR

S.005SPRATIBOR

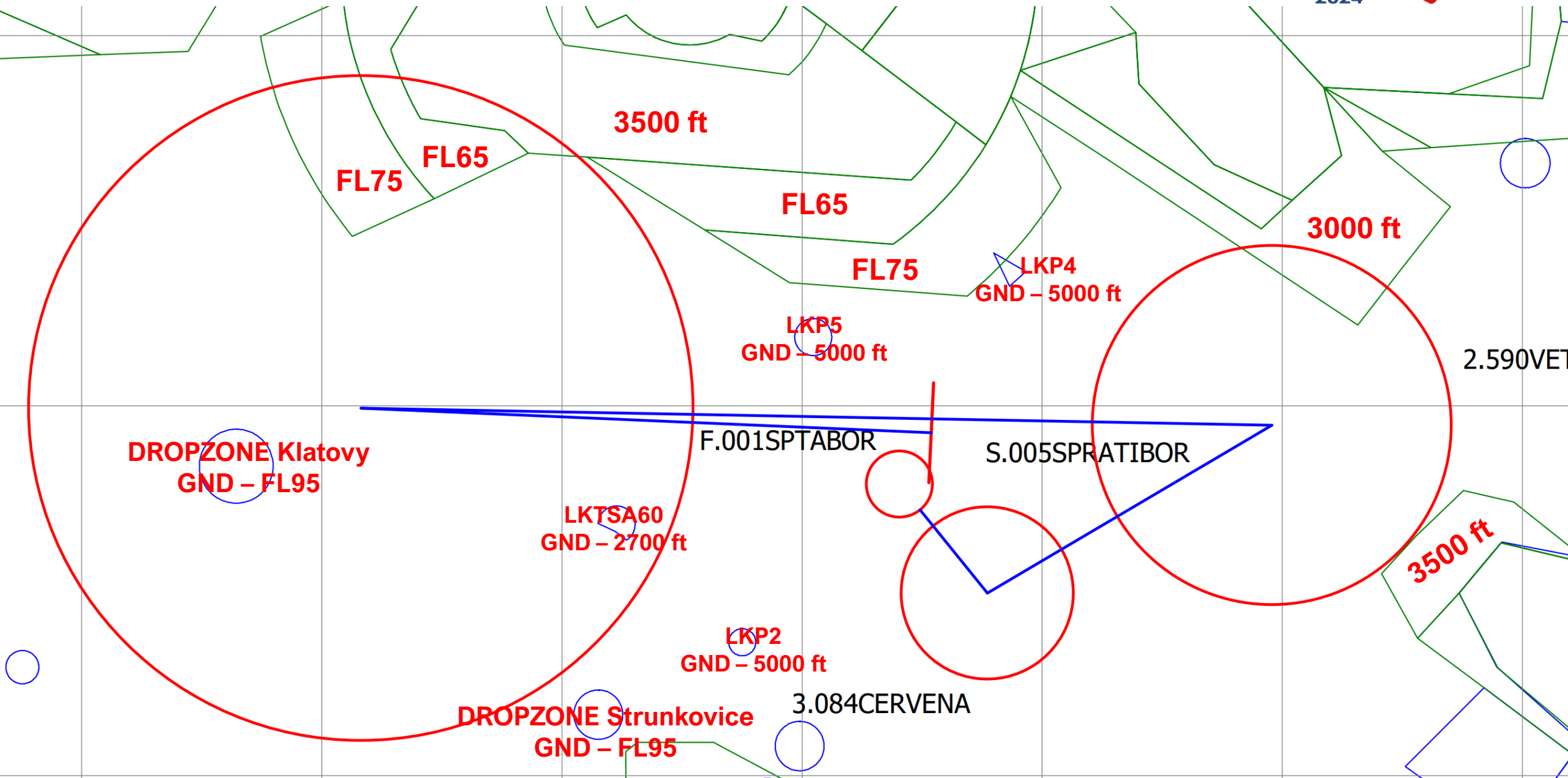
3.084CERVENA

2.590VET

AAT 3:00



# AIRSPACE



# GRID ORDER RWY 29

**ORDER OF CLASSES MAY CHANGE  
ROW NUMBERS WILL BE KEPT CONSTANT**

**CLUB CLASS (40)  
ROWS 1 - 8**

**15M CLASS (29)  
ROWS 16 - 21**

**STANDARD CLASS (34)  
ROWS 9 - 15**

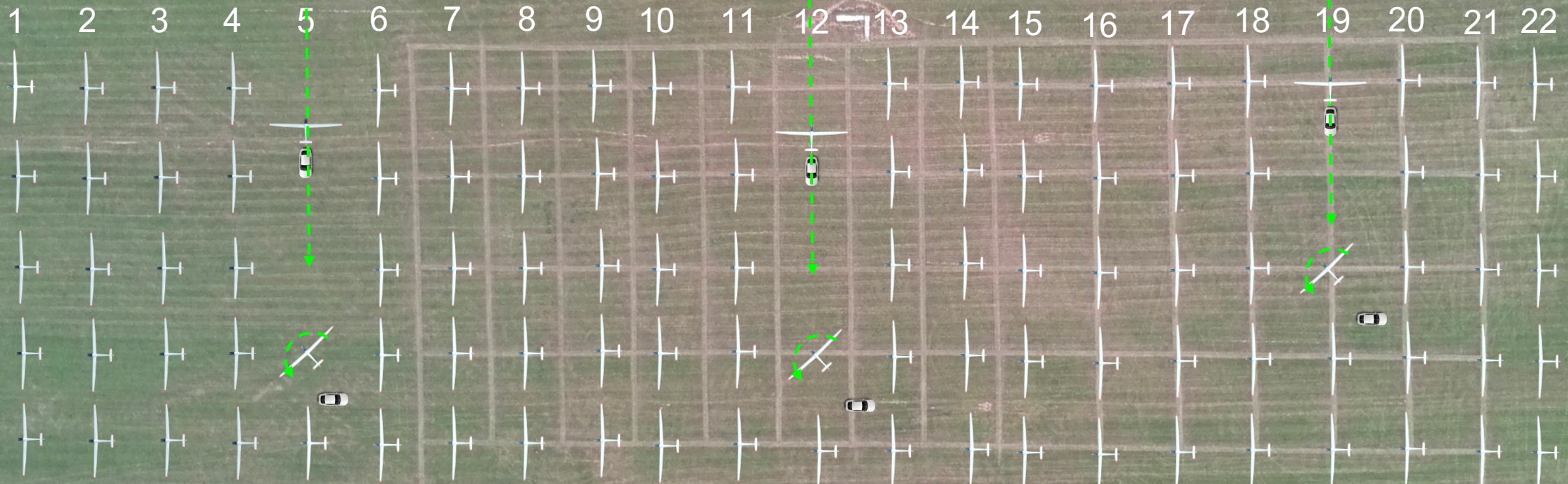
**IF A COMPETITOR IS  
ASSIGNED ROW 1,  
THEY WILL REMAIN IN  
ROW 1 FOR THE  
ENTIRE  
CHAMPIONSHIPS BUT  
LOCATION OF THE  
ROW WILL CHANGE  
EACH DAY**



# GRID RWY 29



**FOLLOW MARKING ON GROUND**  
**COME FROM THE NORTH SIDE**  
**BUILD ROWS FROM SOUTH TO NORTH**

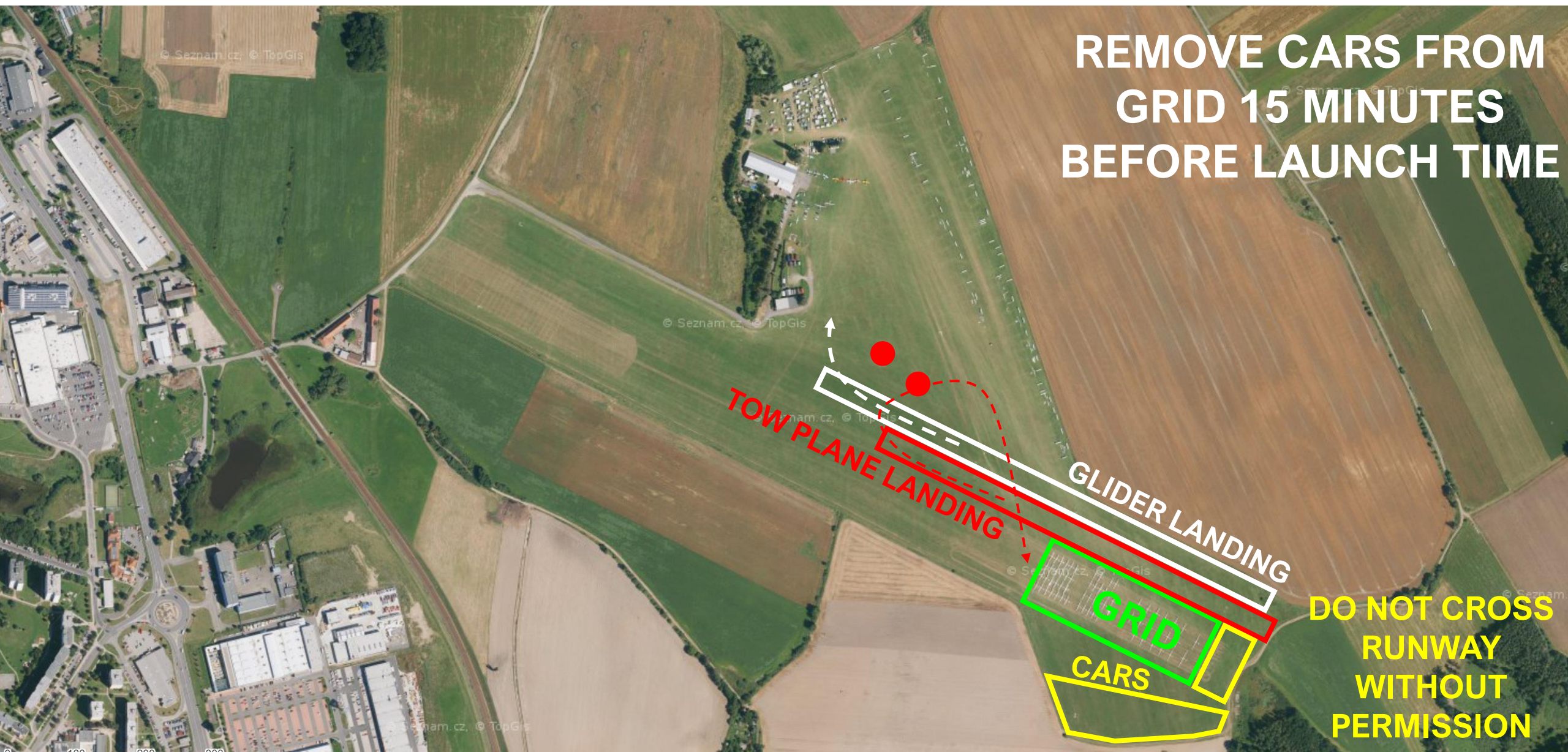


**CARS**



# TAKE-OFF RWY 29

REMOVE CARS FROM  
GRID 15 MINUTES  
BEFORE LAUNCH TIME



TOW PLANE LANDING

GLIDER LANDING

GRID

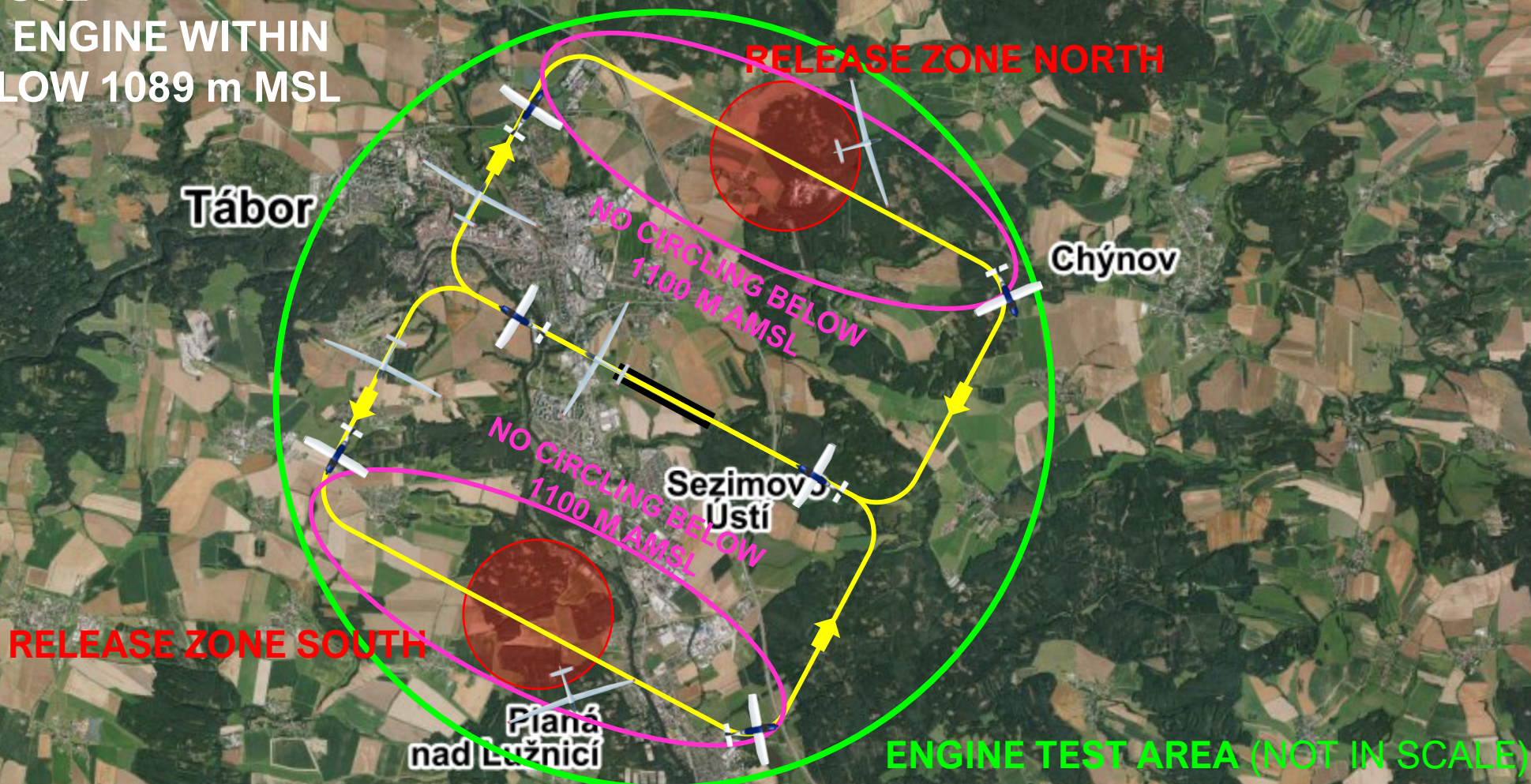
CARS

DO NOT CROSS  
RUNWAY  
WITHOUT  
PERMISSION



# AEROTOWS RWY 29

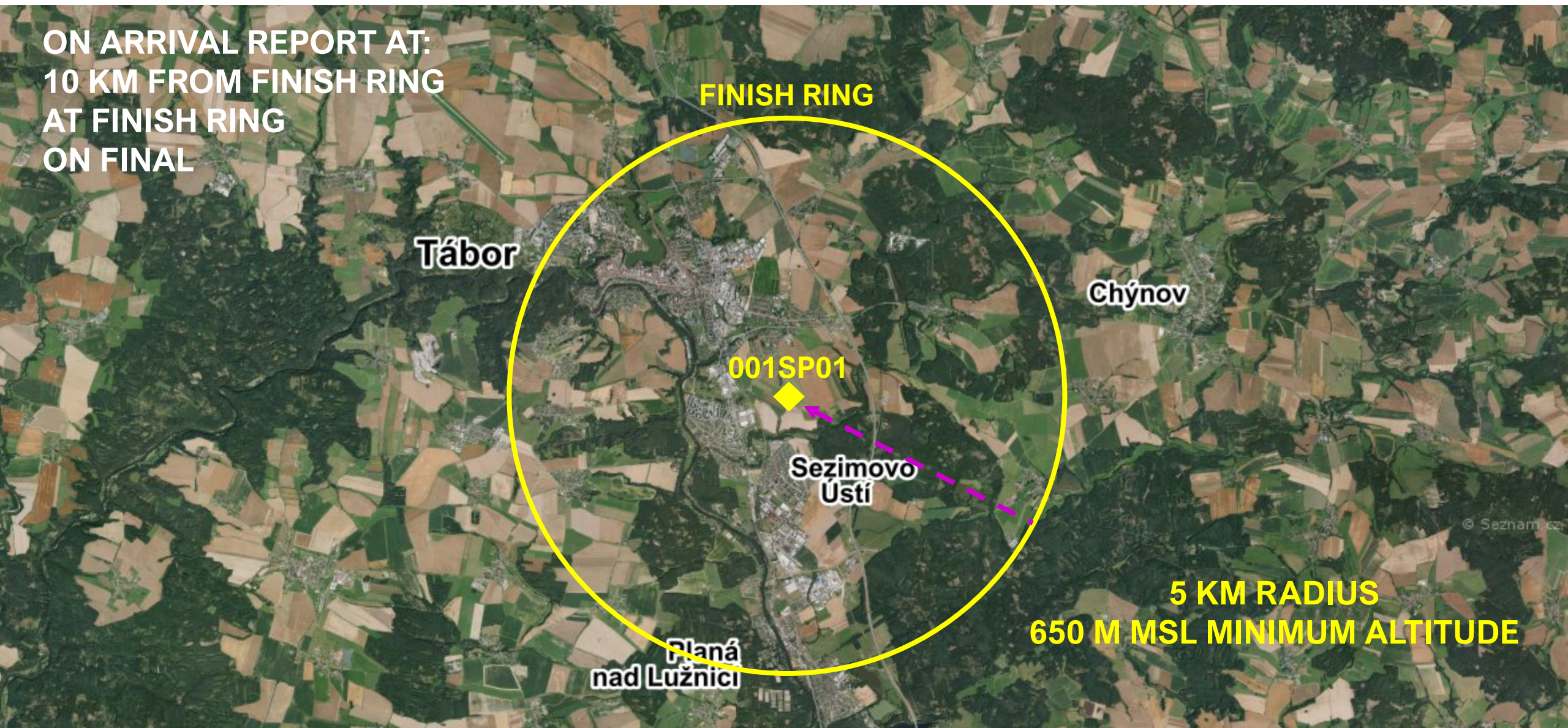
FOR SELF-LAUNCH FOLLOW  
SAME PROCEDURE  
TURN OFF THE ENGINE WITHIN  
TEST AREA BELOW 1089 m MSL





# FINISH RWY 29

ON ARRIVAL REPORT AT:  
10 KM FROM FINISH RING  
AT FINISH RING  
ON FINAL



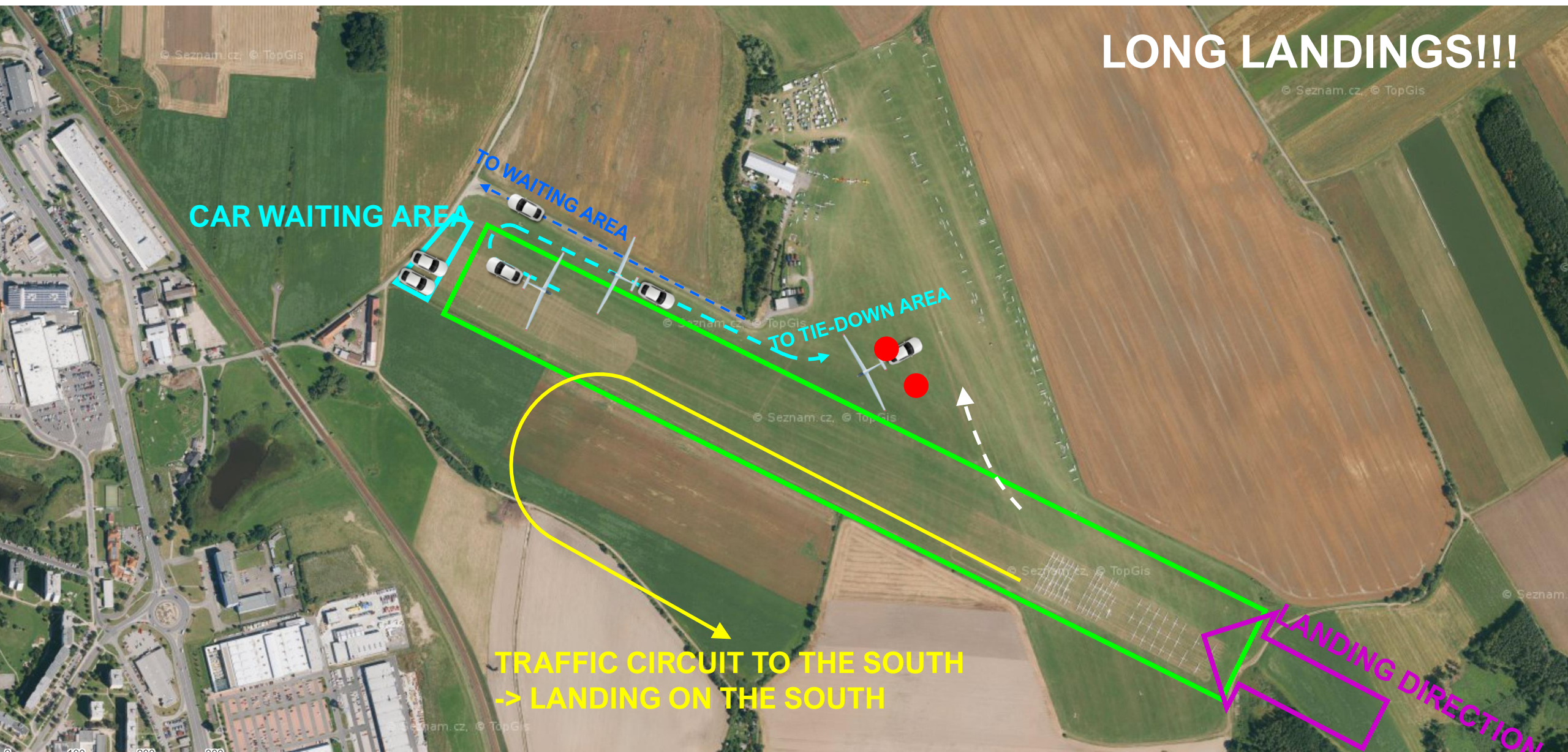


# LANDING RWY 29

EGC  
2024



LONG LANDINGS!!!





# ENERGY CONTROL

— ENERGY CONTROL  
**NOT IN USE TODAY**

# PRE-START ALTITUDE LIMIT

— PRE-START ALTITUDE LIMIT  
**NOT IN USE TODAY**

# PEV START PROCEDURE

— PEV WAIT TIME

**8 MINUTES**

— PEV START WINDOW

**5 MINUTES**

— MAXIMUM NUMBER OF STARTS: 3



# START LINE OPENING



- **START LINE WILL OPEN 30 MINUTES AFTER  
LAST LAUNCH IN CLASS**

# IGC FILE DELIVERY

- SEND ALL FILES TO [IGC@POHODA.COM](mailto:IGC@POHODA.COM)
- **30 MINUTES FOR FILE DELIVERY**
- INCLUDE CN IN EMAIL SUBJECT
- ENSURE CORRECT FILE HEADER
- 1 SECOND FIX RATE

# SAFETY

- LOOK OUT, LOOK OUT, LOOK OUT
- STAY HYDRATED
- FLY SAFE



# INFORMATION FOR TODAY



- RUNWAY IN USE TODAY: **29**
- FIRST LAUNCH: **12:00**

EGC  
2024



Jihočeský kraj



Air Navigation Services  
of the Czech Republic

eclipse.

**SKUPINA**  
**GW JIHOTRANS**

 **ABS JETS**

**NOBIS** GROUP  
WWW.AGROPANEL.CZ

**FOPO II.**